



SAGE HOMES



## JAKARTA

3-9 Beds | 2-4 Bath  
2-3 Car Garage | 1,875 Finished SF

This floor plan works in most of our communities. Please check with your Sage Homes Sales Agent for more information. Some depicted features may be optional. This information is deemed reliable, but not guaranteed. ©Sage Homes. The use of these plans, drawings, and renderings is expressly limited to Sage Homes. Re-use, reproduction by any method, in whole or in part, is prohibited. Floor plans and renderings are the artist's conception and may included some optional features. Ask a Sage Homes Sales Agent for details.



SAGE HOMES

BASEMENT  
1,882 SQFT

MAIN FLOOR  
1,871 SQFT

SECOND FLOOR  
680 SQFT

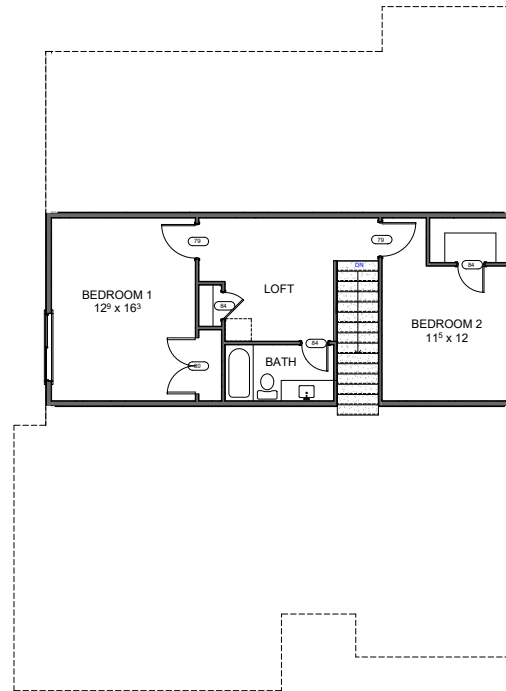
FINISHED SQFT  
1,875 SQFT

TOTAL SQFT  
3,753 SQFT

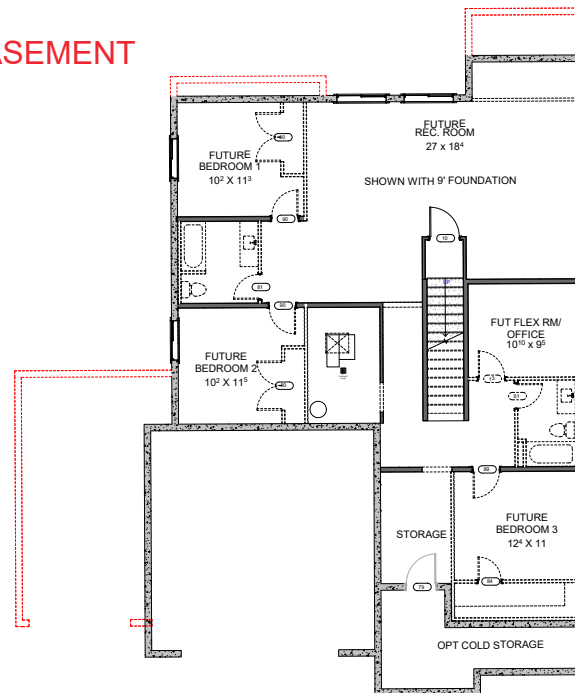
FINISHED SQFT  
2,551 SQFT  
(With 2nd Floor Bonus Rooms)

TOTAL SQFT  
4,427 SQFT  
(With 2nd Floor Bonus Rooms)

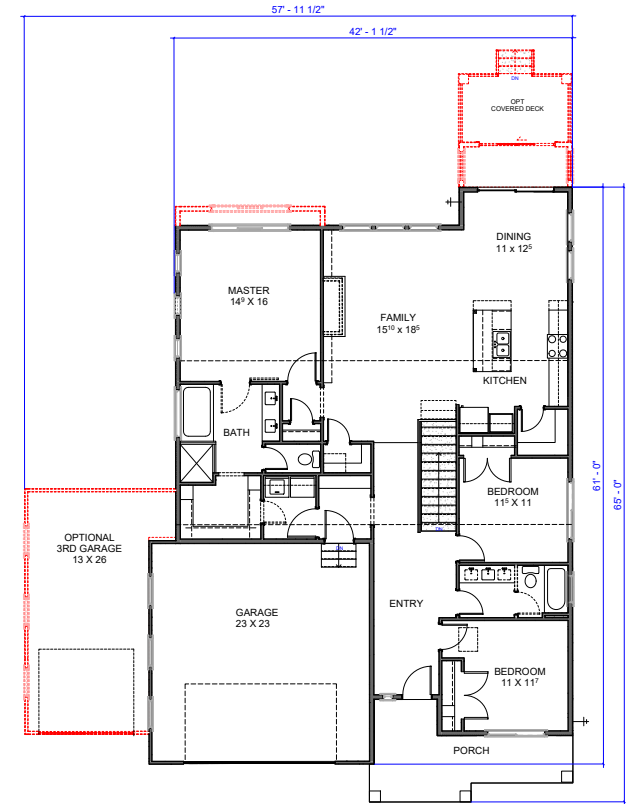
SECOND FLOOR



BASEMENT



MAIN FLOOR



AVAILABLE OPTIONS

- 3 Car Garage
- 9ft Basement
- Finished Basement
- Trex Deck/Covered Trex Deck
- Covered Patio
- 2ft-4ft Dining Extension
- Cold Storage
- 2ft Master Bedroom Extension
- 2nd Floor Bonus Room