



SAGE HOMES



HARTFORD

3-7 Beds | 2.5-3.5 Bath
2-3 Car Garage | 1,854 SQFT Finished SF

This floor plan works in most of our communities. Please check with your Sage Homes Sales Agent for more in-formation. Some depicted features may be optional. This information is deemed reliable, but not guaranteed. ©Sage Homes. The use of these plans, drawings, and renderings is expressly limited to Sage Homes. Re-use, reproduction by any method, in whole or in part, is prohibited. Floor plans and renderings are the artist's conception and may included some optional features. Ask a Sage Homes Sales Agent for details.



SAGE HOMES

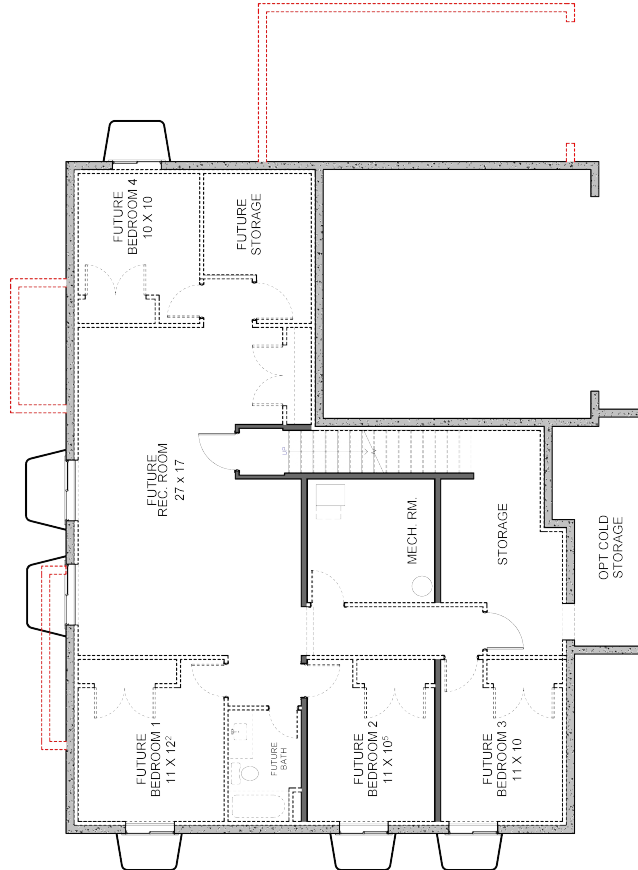
BASEMENT
1,862 SQFT

MAIN FLOOR
1,854 SQFT

FINISHED SQFT
1,854 SQFT

TOTAL SQFT
3,716 SQFT

BASEMENT



MAIN FLOOR



AVAILABLE OPTIONS

- 3 Car Garage
- 9ft Basement
- Finished Basement
- Trex Deck/Covered Trex Deck
- Covered Patio
- 2ft-4ft Dining Extension
- Cold Storage