



SAGE HOMES



Scandinavian

**HAMPTON**  
3-4 Beds | 2.5-3.5 Bath  
2-3 Car Garage | 2,177 Finished SF



Modern Prairie



Modern Farmhouse

This floor plan works in most of our communities. Please check with your Sage Homes Sales Agent for more information. Some depicted features may be optional. This information is deemed reliable, but not guaranteed. ©Sage Homes. The use of these plans, drawings, and renderings is expressly limited to Sage Homes. Re-use, reproduction by any method, in whole or in part, is prohibited. Floor plans and renderings are the artist's conception and may include some optional features. Ask a Sage Homes Sales Agent for details.



SAGE HOMES

BASEMENT  
974 SQFT

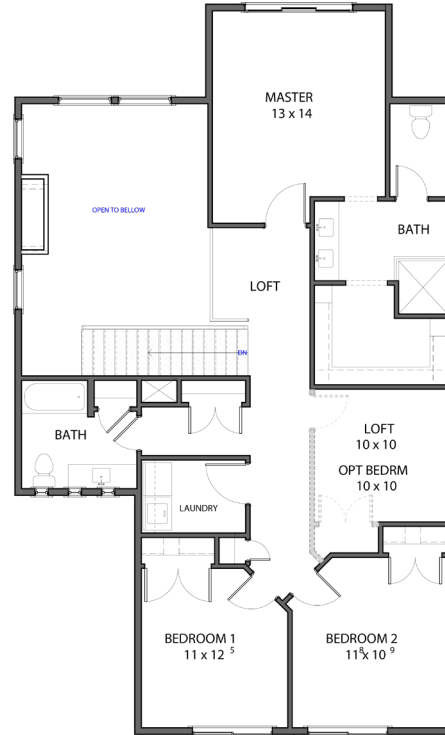
MAIN FLOOR  
970 SQFT

SECOND FLOOR  
1,207 SQFT

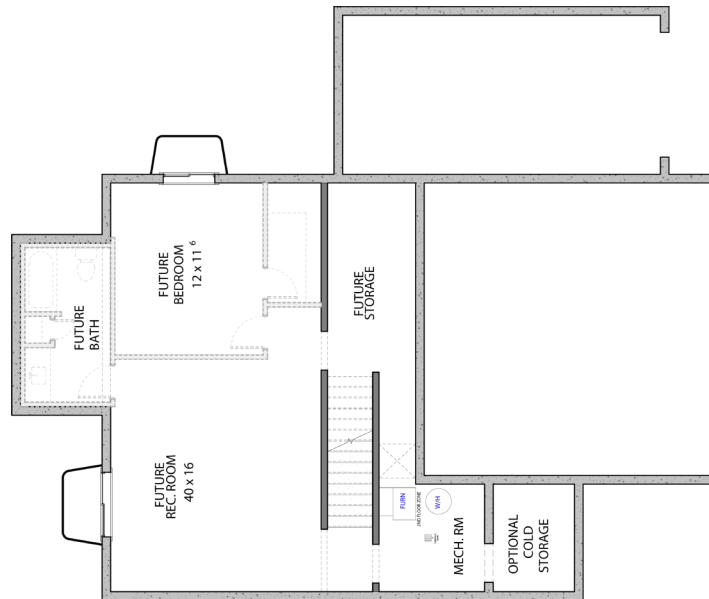
FINISHED SQFT  
2,177 SQFT

TOTAL SQFT  
3,151 SQFT

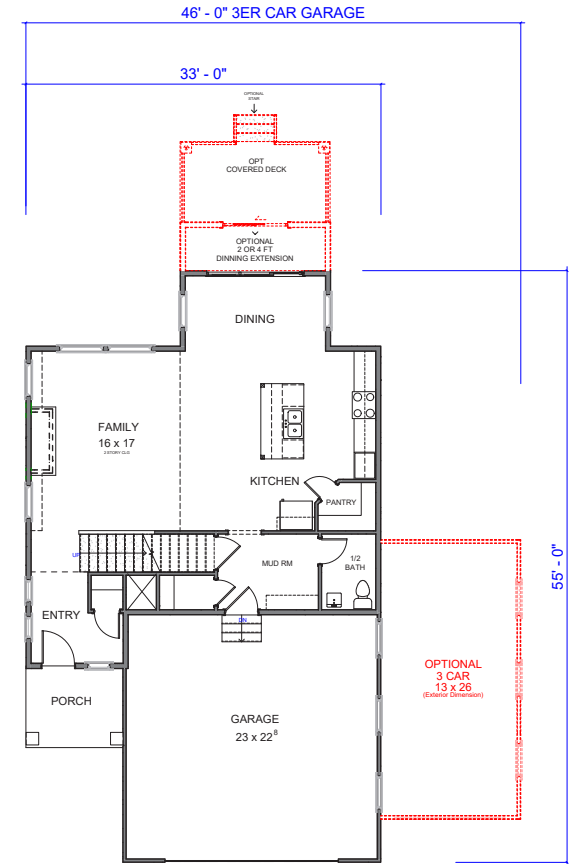
SECOND FLOOR



BASEMENT



MAIN FLOOR



AVAILABLE OPTIONS

- 3 Car Garage
- 9ft Basement
- Finished Basement
- Trex Deck/Covered Trex Deck
- Covered Patio
- 2ft-4ft Dining Extension
- Cold Storage