



SAGE HOMES



Scandinavian



Modern Farmhouse

DURANGO

2-4 Beds | 2-3 Bath
2-3 Car Garage | 1,278 Finished SF

This floor plan works in most of our communities. Please check with your Sage Homes Sales Agent for more information. Some depicted features may be optional. This information is deemed reliable, but not guaranteed. ©Sage Homes. The use of these plans, drawings, and renderings is expressly limited to Sage Homes. Re-use, reproduction by any method, in whole or in part, is prohibited. Floor plans and renderings are the artist's conception and may include some optional features. Ask a Sage Homes Sales Agent for details.



SAGE HOMES

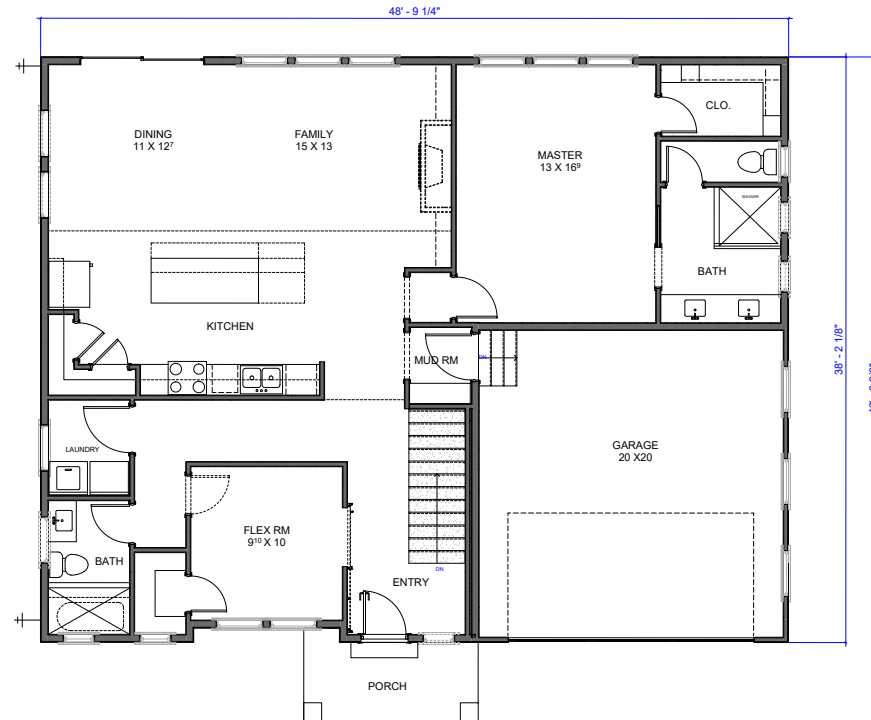
BASEMENT
1,285 SQFT

MAIN FLOOR
1,278 SQFT

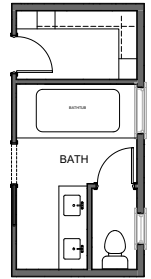
FINISHED SQFT
1,278 SQFT

TOTAL SQFT
2,563 SQFT

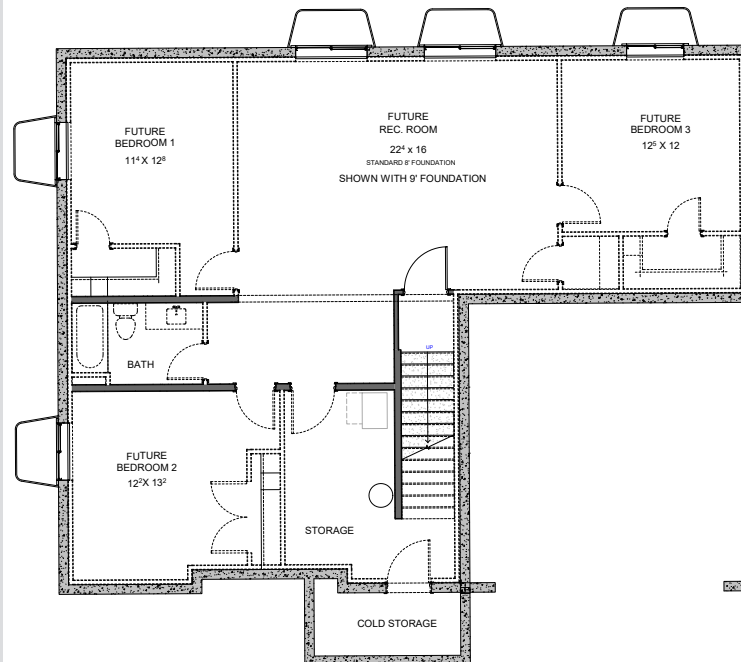
MAIN FLOOR



OPTIONAL MASTER BATHROOM LAYOUT



BASEMENT



AVAILABLE OPTIONS

- 3 Car Garage
- 9ft Basement
- Finished Basement
- Trex Deck/Covered Trex Deck
- Covered Patio
- 2ft-4ft Dining Extension
- Cold Storage