



**Total Sq Ft:** 3,478  
**Finished Sq Ft:** 1,976  
**Bedrooms:** 4-6  
**Bathrooms:** 2.5-3.5  
**Garage:** 2  
**Autumn Leaf Lots:**  
 2, 8, 10, 11, 13, 14, 16

# PONDEROSA

## INTERIOR

- Custom Alder cabinets
- Tile flooring Throughout
- Large casings and baseboards
- Full tile Master Bath and Shower surrounds
- Gas Fireplace with Tile surround
- Soaker tub in master
- Moen faucet fixtures
- Brushed nickel or oil rubbed bronze hardware
- 9' main floor ceilings
- Recessed can lighting
- Two tone interior paint
- Stainless steel, energy efficient appliances
- Granite countertops throughout
- 90% efficient furnace
- 50 gallon water heater

## EXTERIOR

- 2x6 exterior wall construction
- Front and side landscaping included w/automated sprinkler system
- Raised Panel Steel Garage Door
- Low E vinyl windows
- Blown in insulation

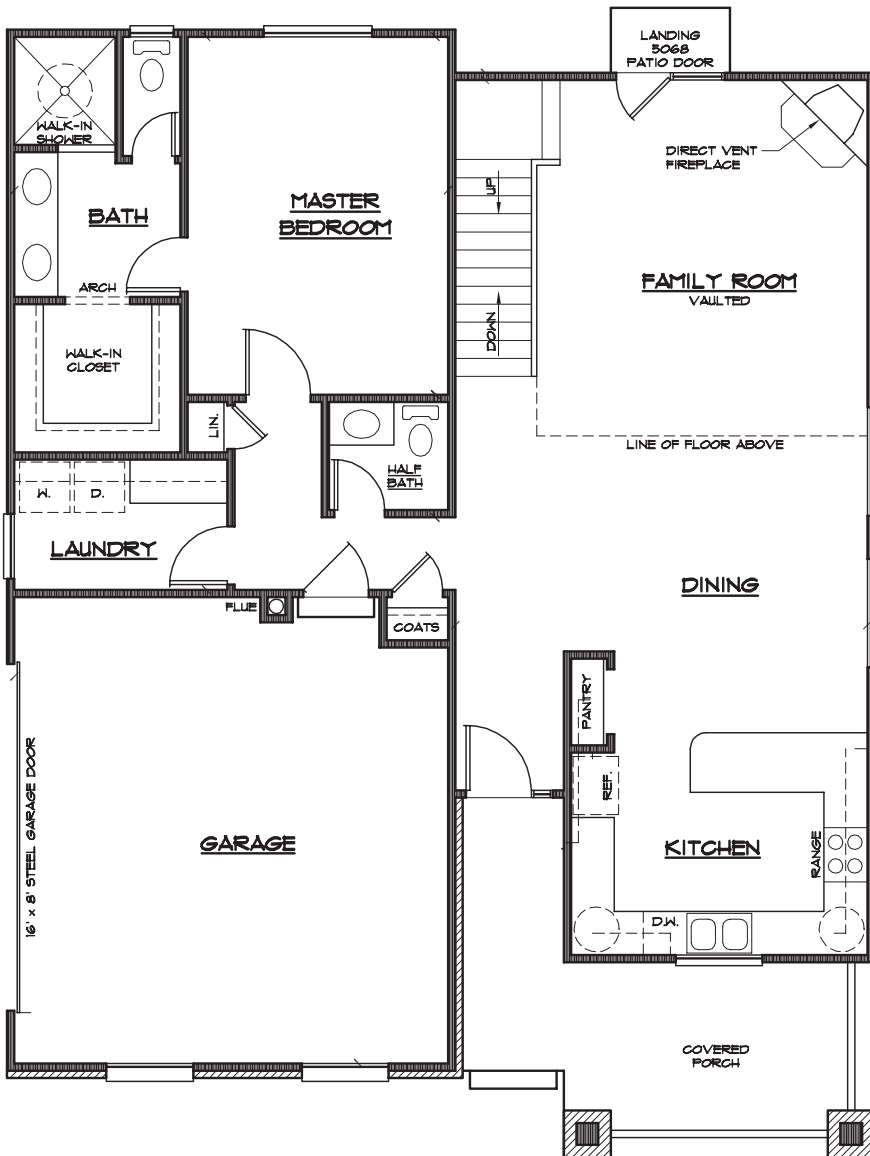


299 South Main Street Suite 2250  
 Salt Lake City, Utah 84111  
 801.708.6878 | [www.BluePineHomes.com](http://www.BluePineHomes.com)

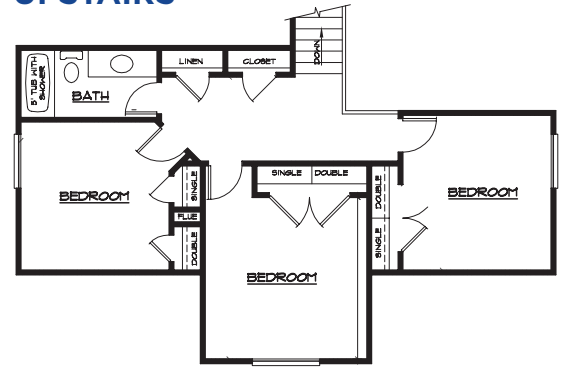
# PONDEROSA

**Total Sq Ft:** 3,478  
**Finished Sq Ft:** 1,976  
**Bedrooms:** 4-6  
**Bathrooms:** 2.5-3.5  
**Garage:** 2  
**Autumn Leaf Lots:**  
 2, 8, 10, 11, 13, 14, 16

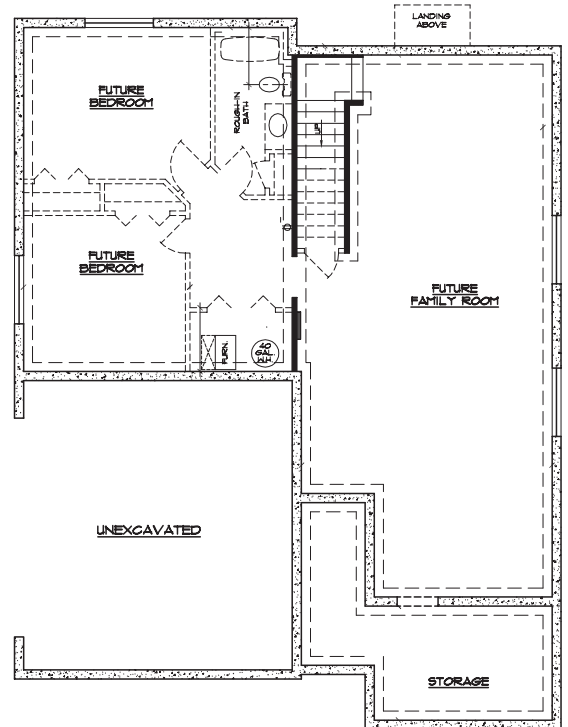
## MAIN FLOOR



## UPSTAIRS



## UNFINISHED BASEMENT



299 South Main Street Suite 2250  
 Salt Lake City, Utah 84111  
 801.708.6878 | [www.BluePineHomes.com](http://www.BluePineHomes.com)