



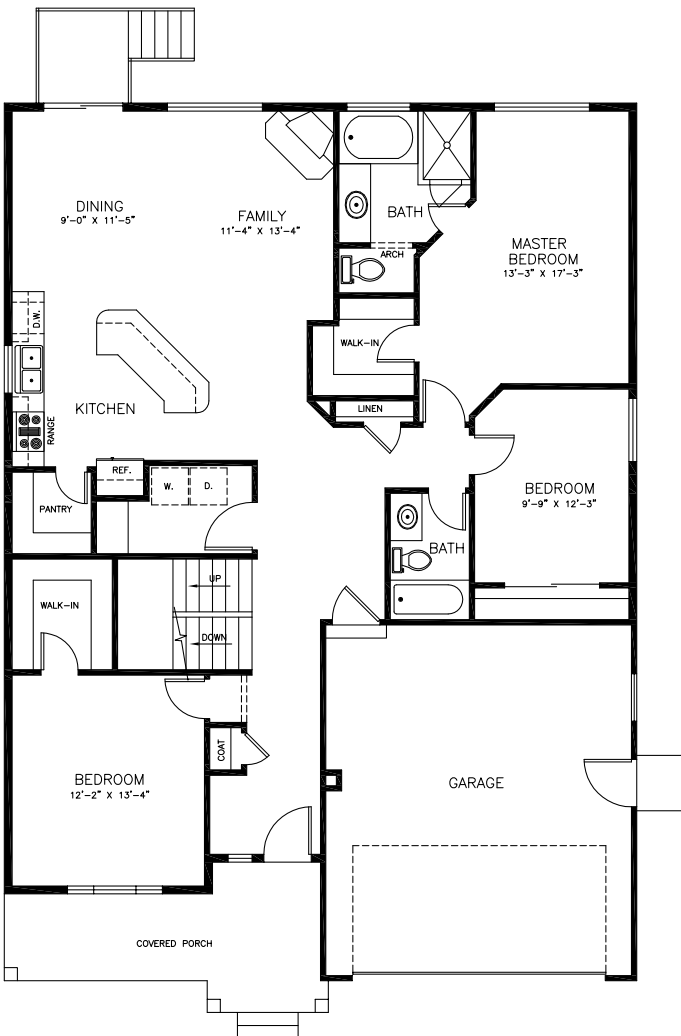
**TOTAL SQ FT:** 4,367  
**FINISHED SQ FT:** 2,567  
**BEDROOMS:** 4-6  
**BATHROOMS:** 3-4  
**GARAGE:** 2  
**AUTUMN LEAF LOTS:**  
2, 8, 10, 11, 13, 14, 16

## EXTERIOR

Full Hardie Siding with 3' wainscoting on front elevation.  
Vinyl, insulated windows with low-e glass.  
Lift master sectional custom aluminum garage door.  
Full colored aluminum soffit & fascia with matching rain gutters.  
30 year architectural asphalt shingle.  
Full landscaping with trees and automated sprinkler system.

## INTERIOR

Blown in fiberglass insulation in walls and ceiling .  
Hand textured drywall and ceilings.  
Trim package includes:  
5" colonial base with matching 3 inch door casing.  
Standard built in closet shelving.  
Two Panel Doors.  
Iron railing with alder hand rails and posts.  
Tile or Hardwood flooring in entry, kitchen, and/or bathrooms.  
Tile showers.  
Solid Alder cabinets throughout.  
Countertops Corian/Granite  
Moen plumbing fixtures.  
Weiser door hardware.  
Three tone paint.  
13 Seer central air. (10 year compressor warranty)  
92.1% efficiency furnace.  
50 gallon Bradford gas water heater with expansion tank.  
Instant hot water. (Recirculating)



299 SOUTH MAIN STREET SUITE 2250 | SALT LAKE CITY, UTAH 84111  
801-708-6878 | WWW.BLUEPINEHOMES.COM