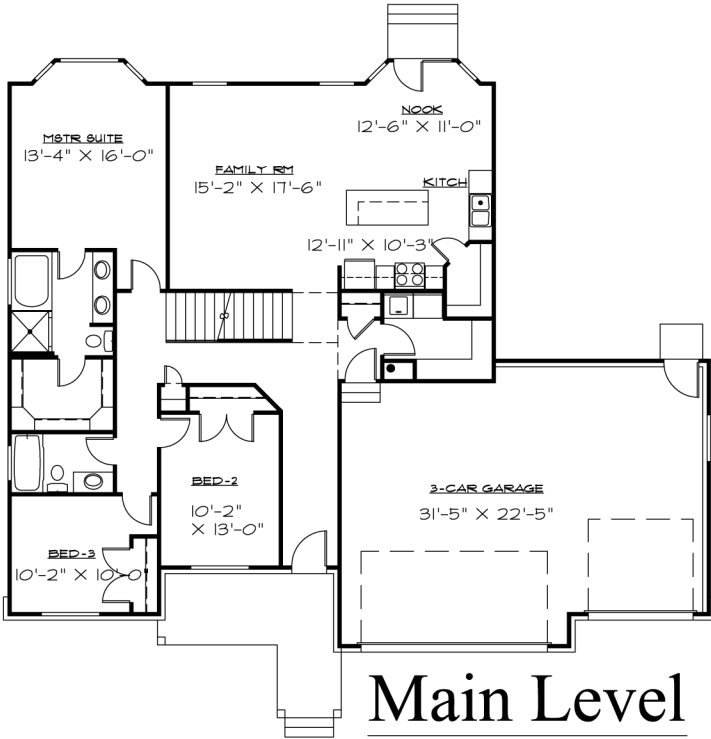


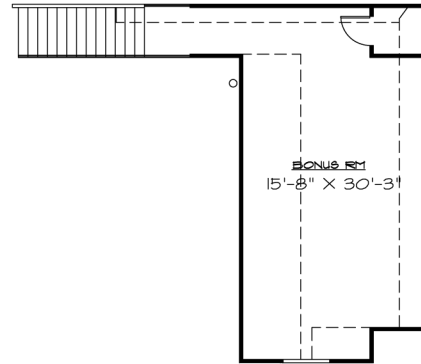
Front Elevation

Bristol



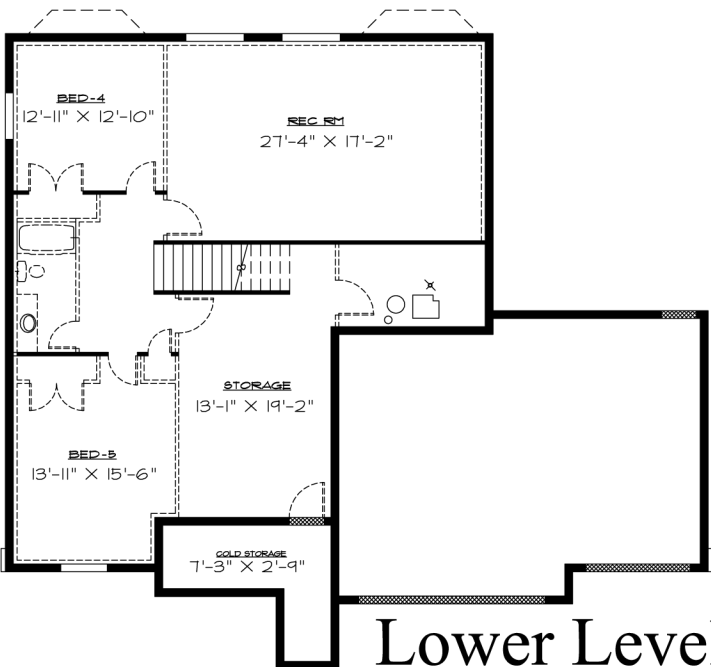
Main Level

1636 Sq. Feet Main Level



Upper Level

574 Sq. Feet Upper Level



Lower Level

1488 Sq. Feet Lower Level



OVERALL DIMENSIONS 60'-4" X 50'-7"
 2210 FINISHED SQ. FEET
 3698 TOTAL SQ. FEET
 ROOM SIZES AND SQ. FOOTAGES SHOWN ARE APPROXIMATE.
 PLANS, FEATURES AND PRICING SUBJECT TO CHANGE WITHOUT NOTICE
 RENDERINGS ARE FOR ILLUSTRATION PURPOSES ONLY