

# ENSEMBLE



Traditional Elevation



Craftsman Elevation



European Elevation



Legacy Elevation

Symphony Homes

801.298.8555

[symphonyhomes.com](http://symphonyhomes.com)



\*All renderings are artists' conception. Continuing a policy of constant design and pricing improvement, we reserve the right of price, product or design change without obligation to notify. Please refer to the base plan for an accurate depiction of the exterior standard features.

Main



Finished	2,426 ft <sup>2</sup>
Unfinished	2,586 ft <sup>2</sup>
<b>Total</b>	<b>5,012 ft<sup>2</sup></b>

Notes:

---

---

---

---

---

---

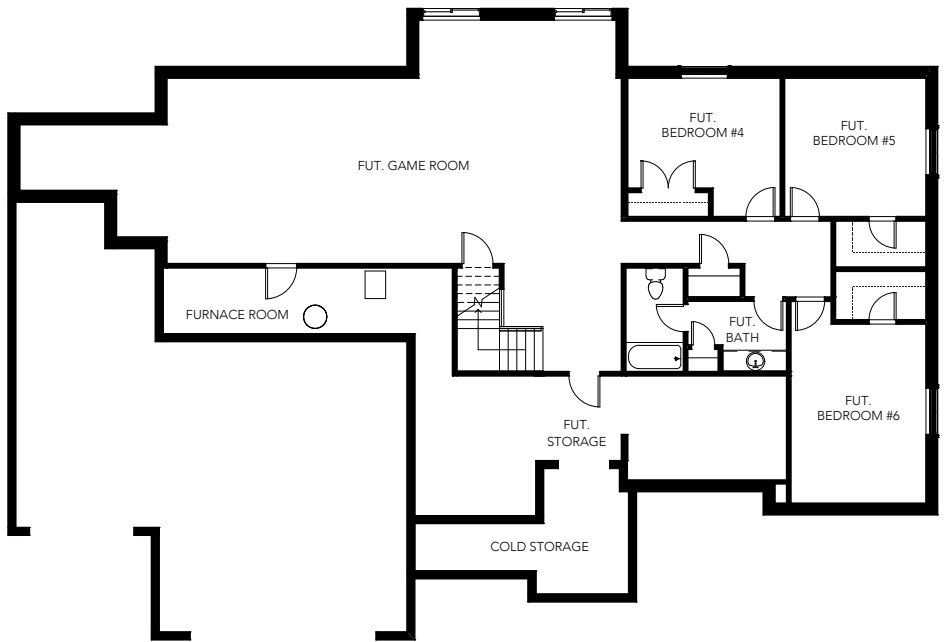
---

---

---

---

Basement



\*Home square footages are approximates and are subject to change.

# ENSEMBLE