

# THE CENTRURION 2900

## — TWO STORY —

Total Sq Ft: **2,853**

Finish Sq Ft: **1,973**

Unfinished Sq Ft: **880**

## — HOME FEATURES —

- 4 Bedrooms
- 2½ Baths
- Covered Porch
- Custom Archways
- Large Walk-In Closet
- Spacious Kitchen
- Cold Storage
- 4 Car Capacity Garage
- Bonus Room or 4th Bedroom
- Grand Bath with Garden Tub
- Custom railings
- Upstairs Laundry
- Mud Bench Area
- French Doors



**CASTLE CREEK  
HOMES**

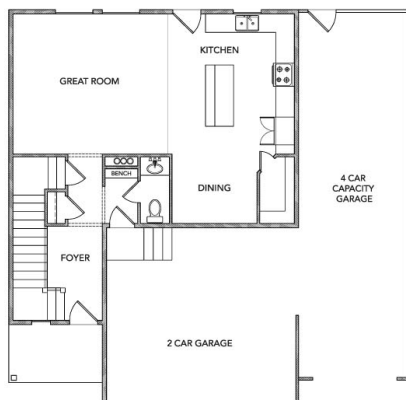
**EXPERIENCE OUR DIFFERENCE™**

**OFFICE: 801.336.6868**

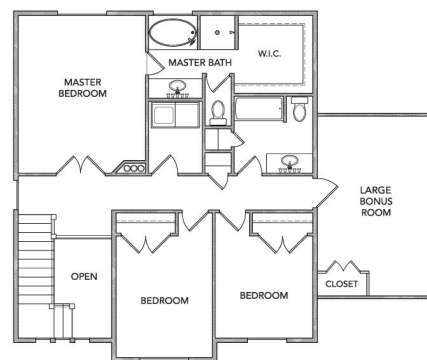
**CASTLECREEKHOMES.COM**



MAIN FLOOR



SECOND FLOOR



BASEMENT

