



# VENICE

## SPECIFICATIONS

TOTAL SQFT: .....3,344  
 Finished SQFT: .....1,615  
 Unfinished SQFT: .....1,729  
 Bed: 1/4 | Bath: 2/3  
 Width: 47' | Depth: 50'

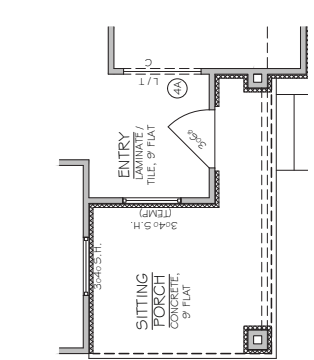
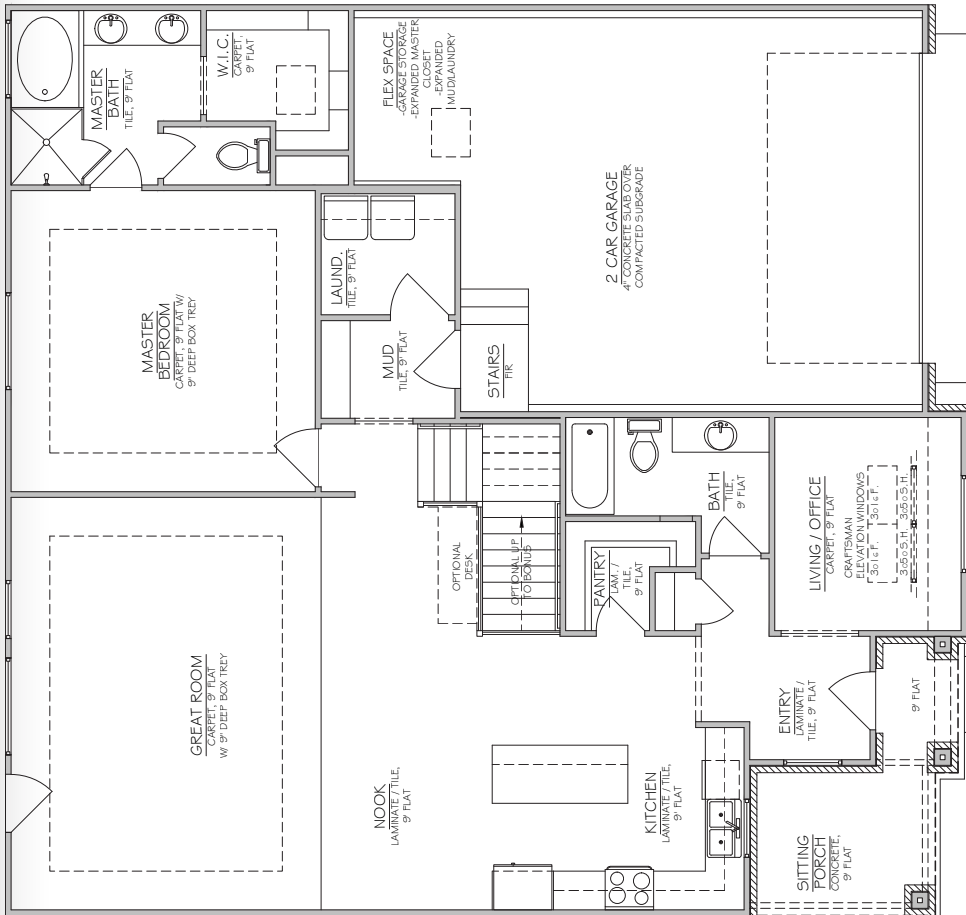
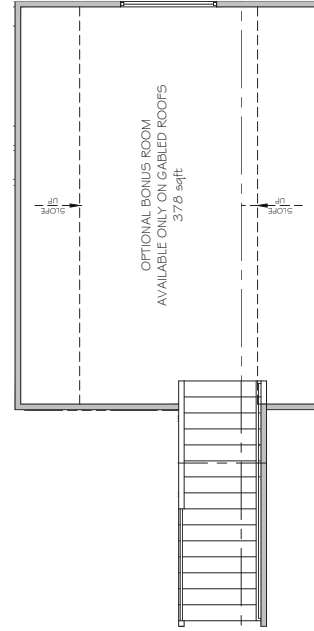
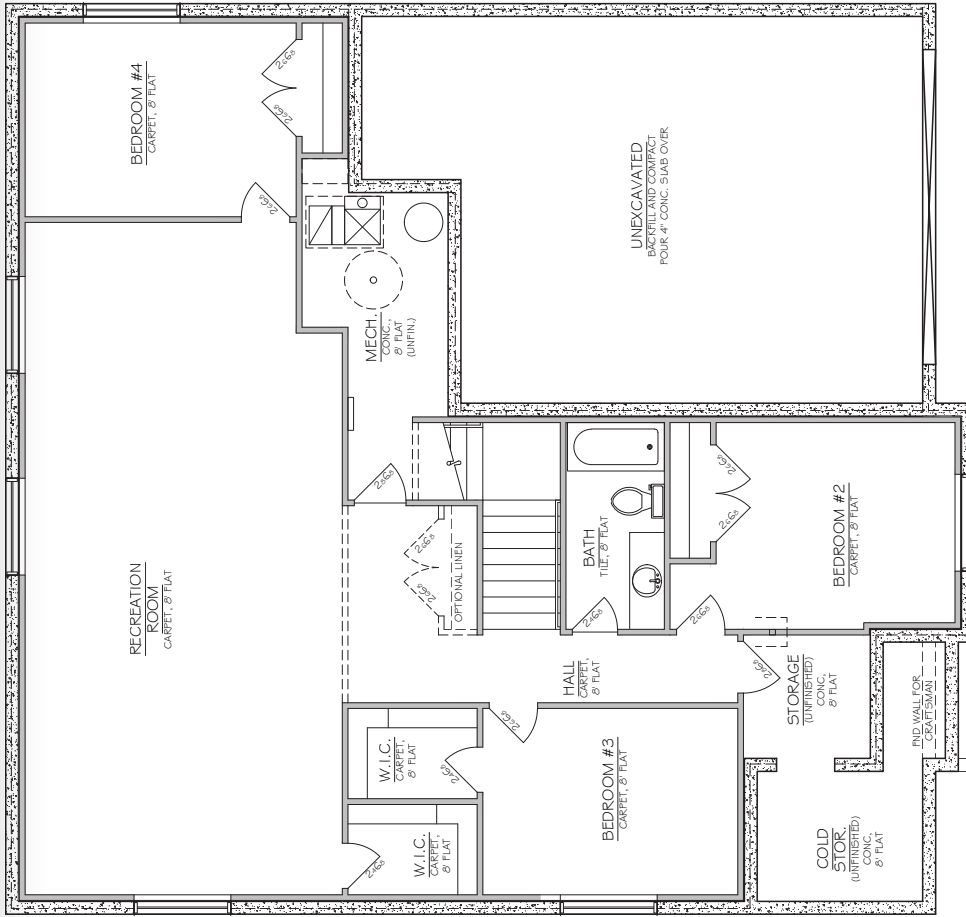


SEE THE 3D TOUR OF THE VENICE  
[www.NilsonHomes.com/VENICE](http://www.NilsonHomes.com/VENICE)

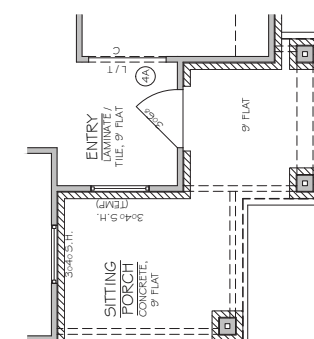


Nilson Homes has a wide variety of home designs, model homes and communities throughout Weber and Davis Counties. Please contact your New Home Sales Representative today to find out more about building your future home.





CRAFTSMAN FRONT PORCH



AMERICANA FRONT PORCH

\* Plans and square footage are approximate and subject to change. Prices change without notice. Renderings are intended for artistic purposes only. Other amenities available.