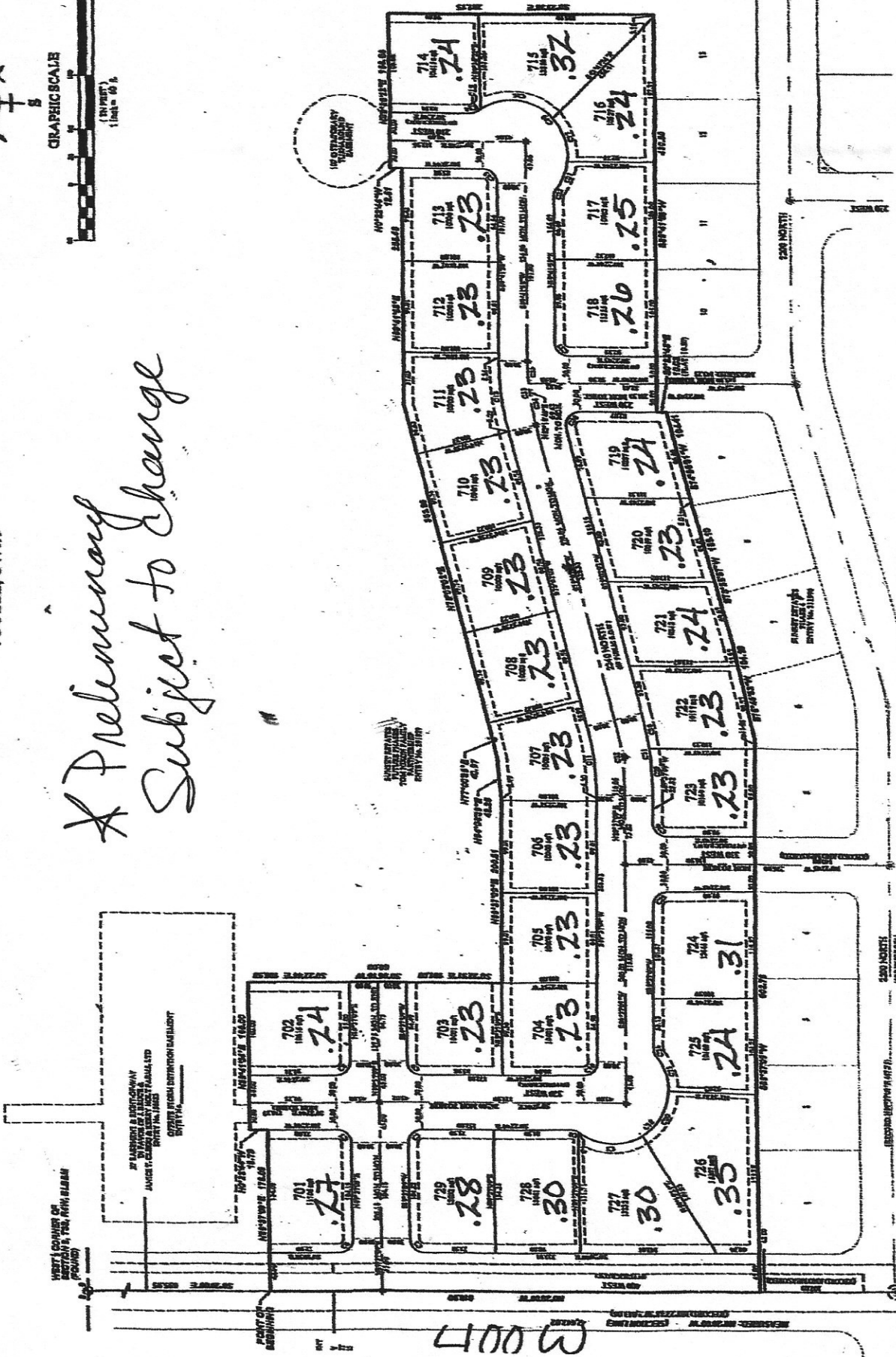


GRAPHIC SCALE
(1 inch = 40 ft.)

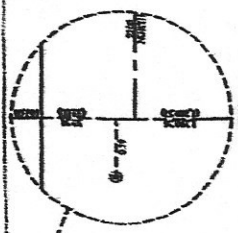
FINAL PLAT
A SUBDIVISION LOCATED IN THE SOUTHWEST 1/4 OF SECTION 9, T3S, R4W, SLB&M
244 WEST 2200 NORTH
TOOELE, UTAH

** Preliminary
Subject to Change*



- NOTES:
- 1) ALL IRON & CAP PEGS SHOWN TO BE SET AT ALL NEAR LOT CORNERS. PHOTO BE SET AT CURB AT THE EXTENSION OF THE SIDE LOT LINE.
 - 2) * STREET MONUMENTS TO BE SET PER TOOELE COUNTY SURVEYORS SPECIFICATIONS.
 - 3) * EXISTING STREET MONUMENT.

JP High



SOUTH CORNER OF SECTION 9, T3S, R4W, SLB&M

SOUTHWEST CORNER OF SECTION 9, T3S, R4W, SLB&M

30017