

Stonehaven V

Two-story • 2,188 Finished Sq. Ft. • 3,229 Total Sq. Ft. • 3-7 Bedrooms • 2.5-4 Baths • Living Room • Opt. Den
Opt. Covered Patio • Opt. Extended Great Room • Opt. Guest Bedroom and Bath
Opt. 4th Bedroom Upstairs • 3 Bay Garage



A



B



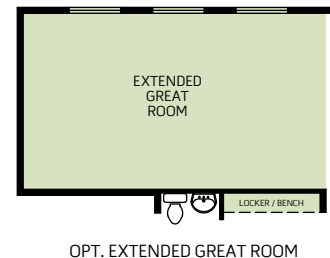
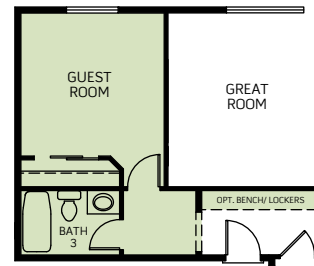
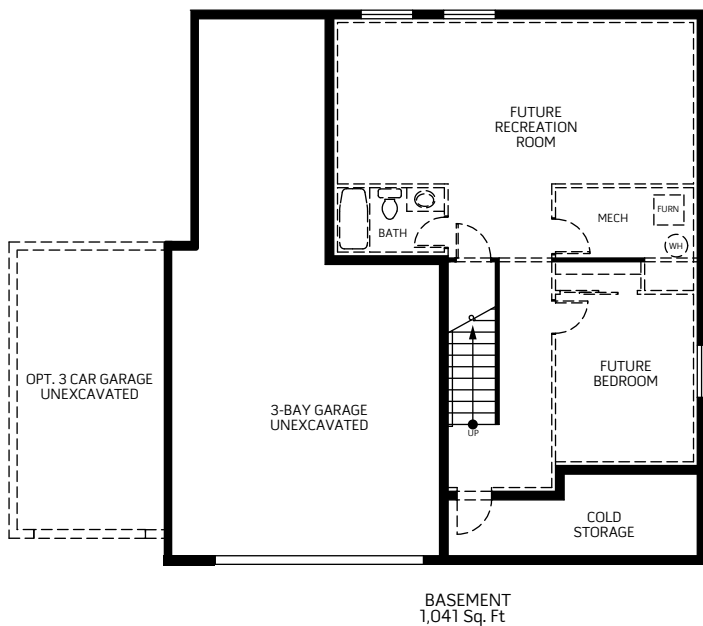
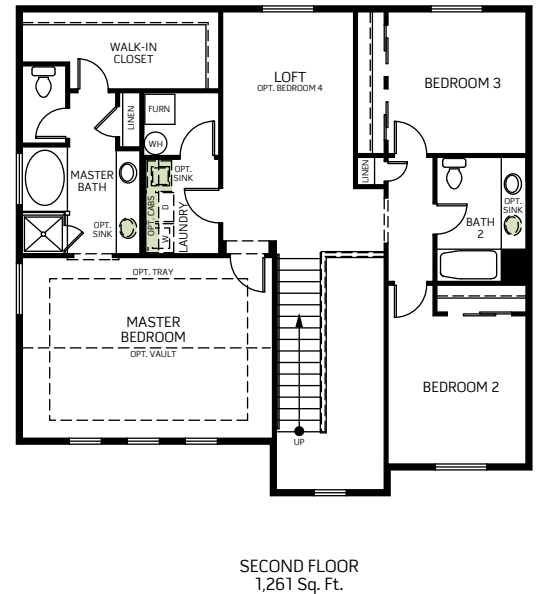
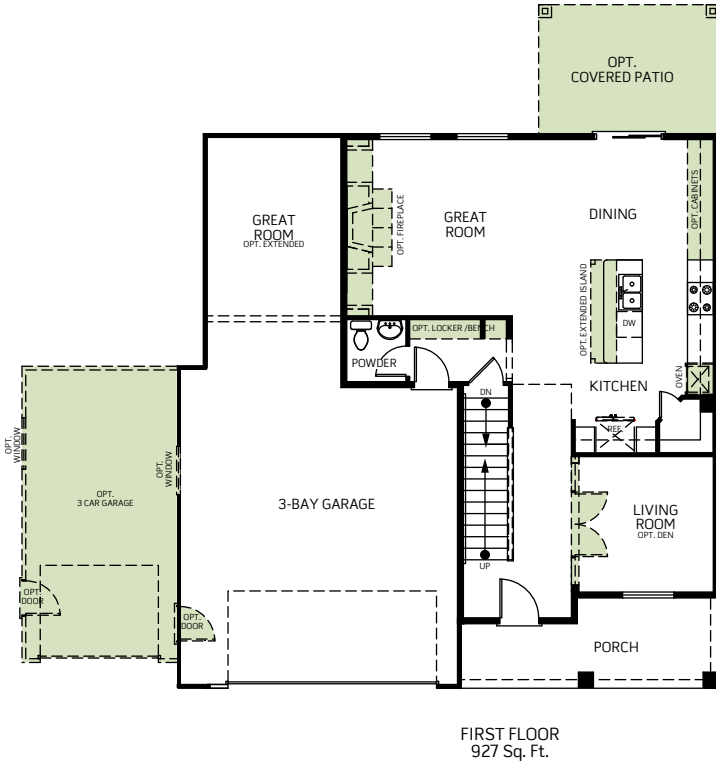
C

Woodside Homes reserves the right to change elevations, specifications, materials and prices without notice. All square footages are approximate. Window location, porches, ceiling heights and room dimensions vary per elevation. The availability of certain options is subject to construction status and schedule. Optional features may be predetermined and included at additional cost on select homes. Renderings are artist's conception only. Rev. 01/18



Stonehaven V

Two-story • 2,188 Finished Sq. Ft. • 3,229 Total Sq. Ft. • 3-7 Bedrooms • 2.5-4 Baths • Living Room • Opt. Den
Opt. Covered Patio • Opt. Extended Great Room • Opt. Guest Bedroom and Bath
Opt. 4th Bedroom Upstairs • 3 Bay Garage



Woodside Homes reserves the right to change elevations, specifications, materials and prices without notice. All square footages are approximate. Window location, porches, ceiling heights and room dimensions vary per elevation. The availability of certain options is subject to construction status and schedule. Optional features may be predetermined and included at additional cost on select homes. Renderings are artist's conception only. Rev. 01/18

