



SIENA

SPECIFICATIONS

TOTAL SQFT:.....4,012
 Finished SQFT:1,995
 Unfinished SQFT:2,017
 Bed: 2/6 | Bath: 2/3
 Width: 50' | Depth: 55'

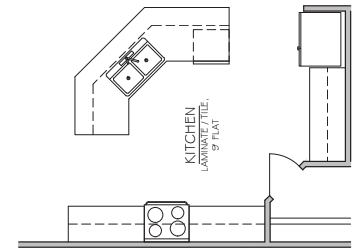
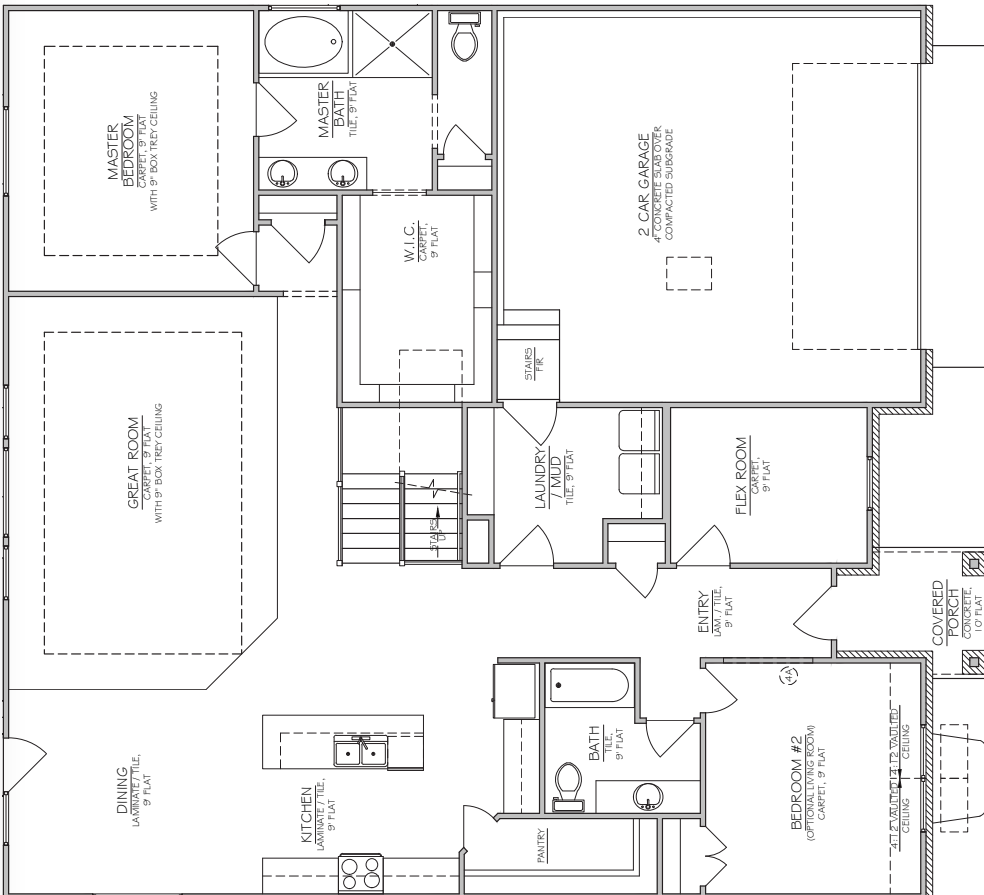
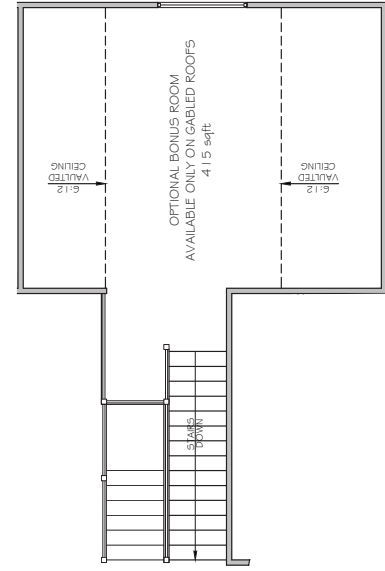
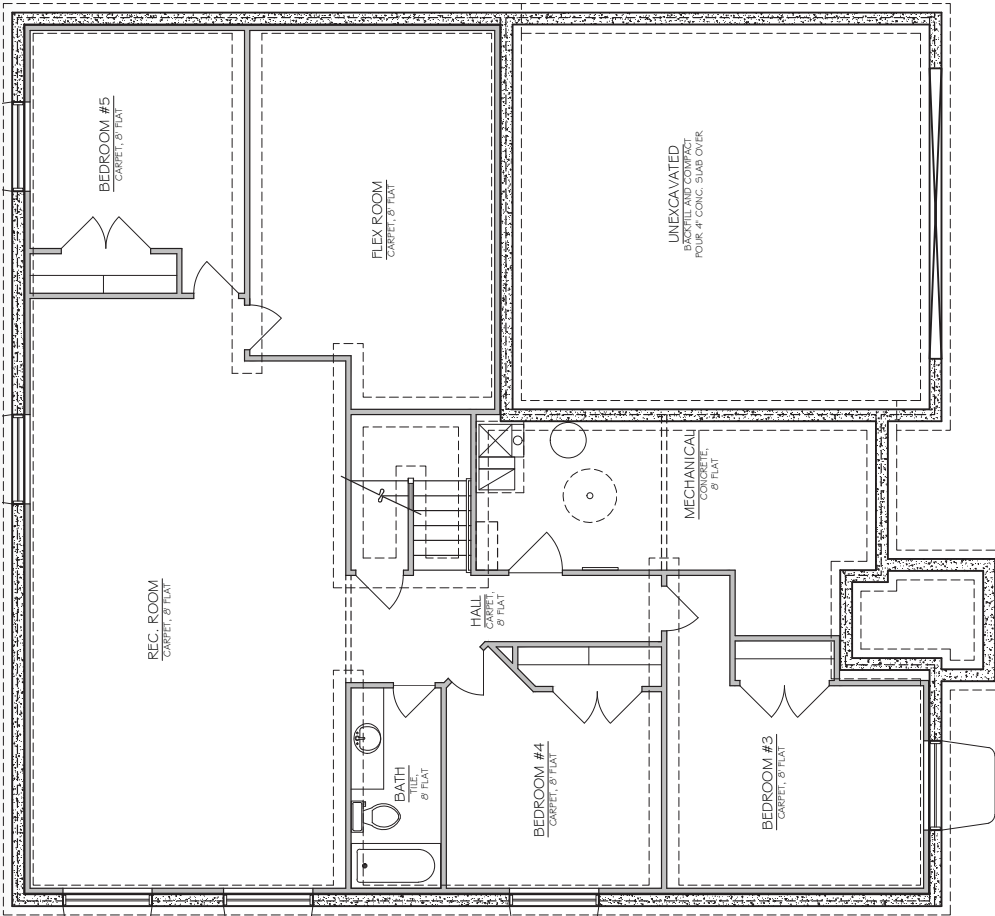


SEE THE 3D TOUR OF THE SIENA
www.NilsonHomes.com/SIENA



Nilson Homes has a wide variety of home designs, model homes and communities throughout Weber and Davis Counties. Please contact your New Home Sales Representative today to find out more about building your future home.





KITCHEN OPTION

* Plans and square footage are approximate and subject to change. Prices change without notice. Renderings are intended for artistic purposes only. Other amenities available.