

PINEVIEW_TRADITIONAL_2016

BASEMENT

SQUARE FOOTAGE

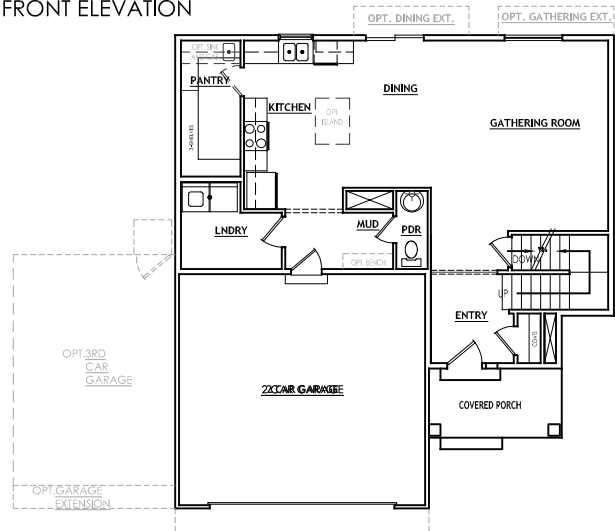
2817 Total | 2039 Finished | 778 Unfinished

DIMENSIONS

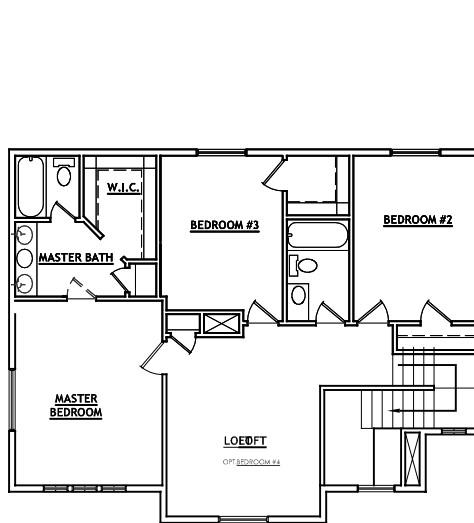
38'-0" Width | 41'-0" Depth



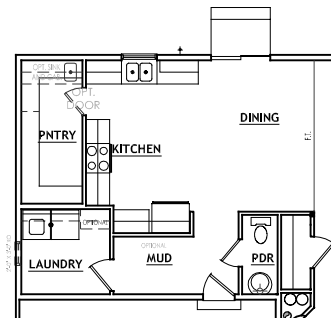
FRONT ELEVATION



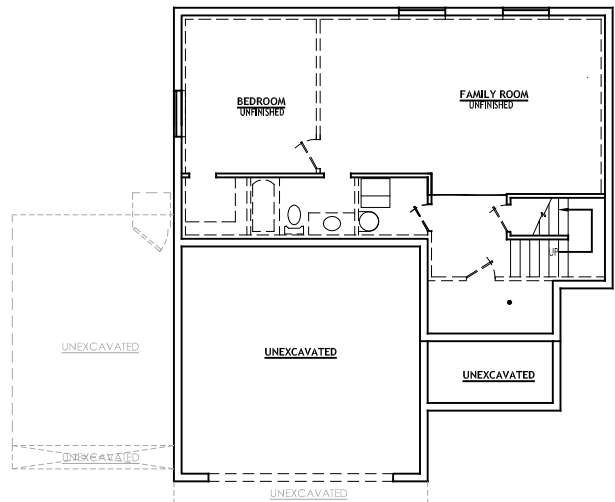
MAIN LEVEL
(OPTIONAL 9'-0" CEILING)



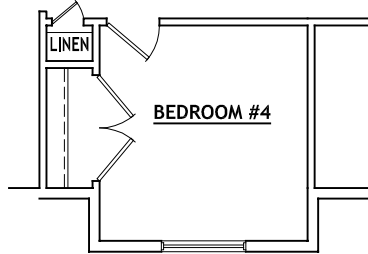
UPPER LEVEL
(OPTIONAL 9'-0" CEILING)



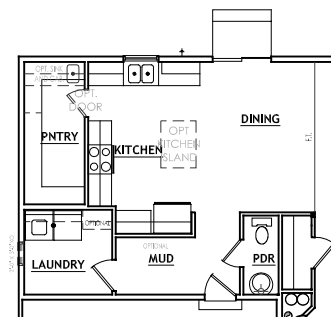
OPT. GRAND KITCHEN
UPGRADE LV 1



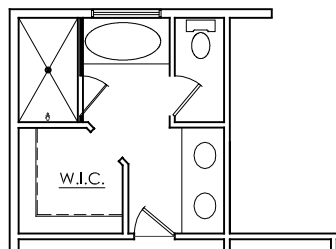
BASEMENT LEVEL
(OPTIONAL 9'-0" WALLS)



OPT. BEDROOM #4



OPT. GRAND KITCHEN
UPGRADE LV 2



OPT. GRAND BATH UPGRADE

PLEASE NOTE: Square footage and measurements noted are approximate. All drawings of exteriors and floor plans are artist's renditions and may vary from actual product. Plans are subject to change to comply with city ordinances. Placement of home on lot is done at seller's discretion. All information on this sheet is subject to change without notice.

