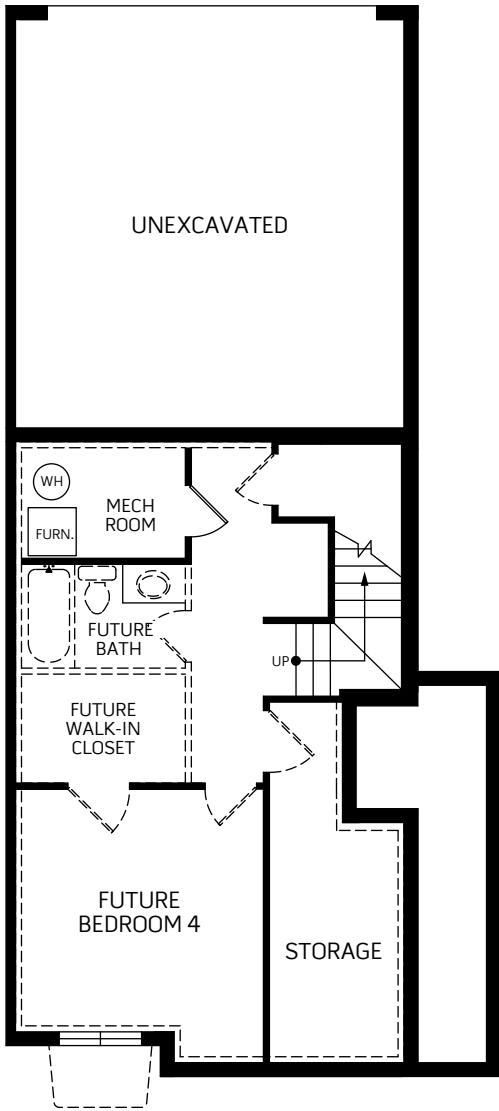
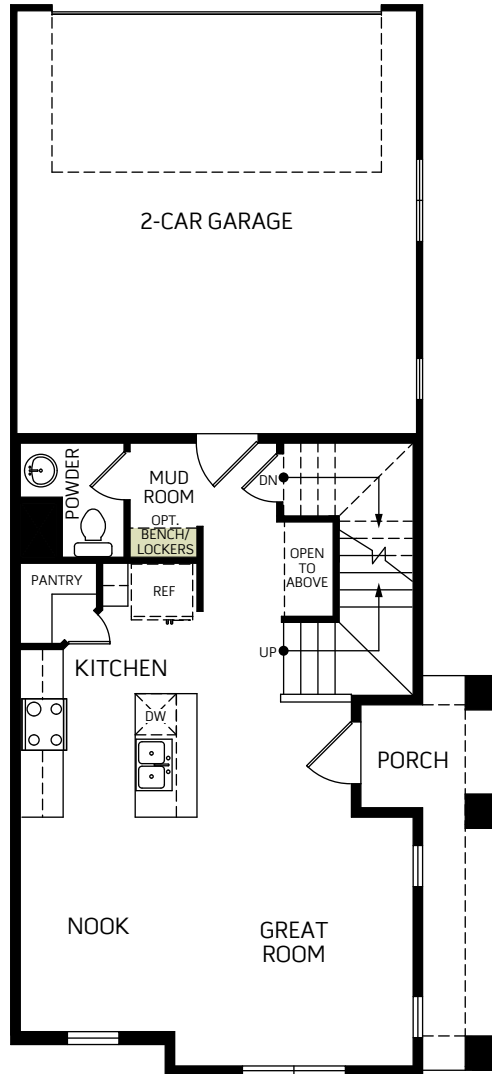


**Jefferson**

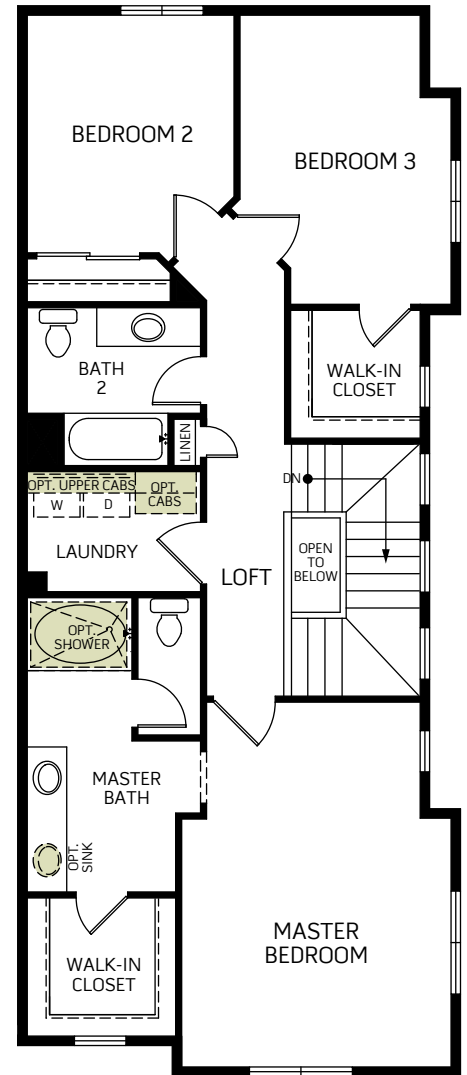
Two-story • 1,584 Finished Sq. Ft. • 2,122 Total Sq. Ft. • 3-4 Bedrooms • 2.5-3.5 Baths • Great Room  
• Walk-In Closet • 2 Car Garage



**BASEMENT**  
538 Sq. Ft.



**FIRST FLOOR**  
597 Sq. Ft.

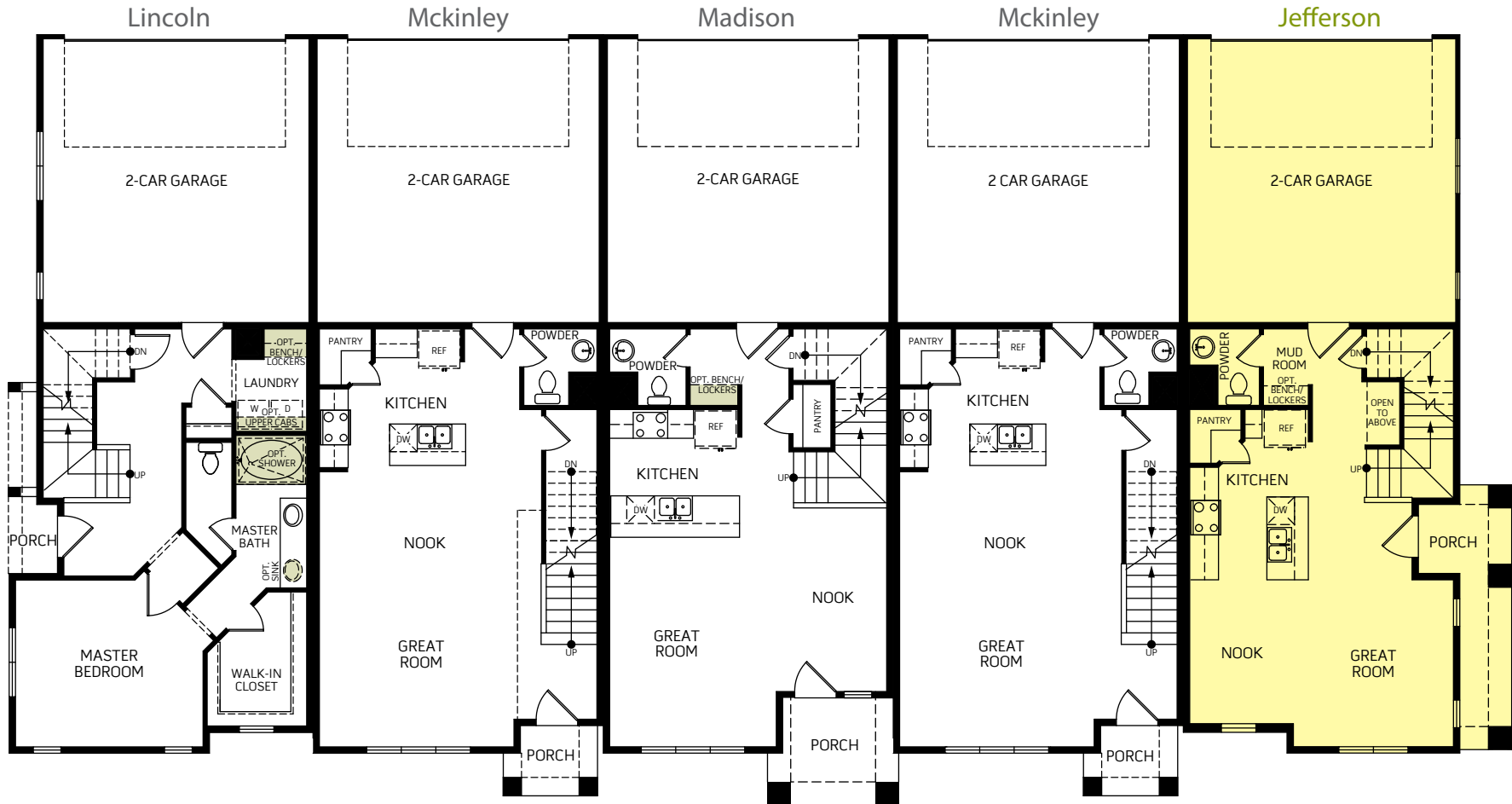


**SECOND FLOOR**  
987 Sq. Ft.



Woodside Homes reserves the right to change elevations, specifications, materials and prices without notice. All square footages are approximate. Window location, porches, ceiling heights and room dimensions vary per elevation. The availability of certain options is subject to construction status and schedule. Optional features may be predetermined and included at additional cost on select homes. Renderings are artist's conception only. Rev. 11/18

**Jefferson**



FIRST FLOOR  
630 Sq. Ft.

FIRST FLOOR  
643 Sq. Ft.

FIRST FLOOR  
623 Sq. Ft.

FIRST FLOOR  
643 Sq. Ft.

FIRST FLOOR  
597 Sq. Ft.



Woodside Homes reserves the right to change elevations, specifications, materials and prices without notice. All square footages are approximate. Window location, porches, ceiling heights and room dimensions vary per elevation. The availability of certain options is subject to construction status and schedule. Optional features may be predetermined and included at additional cost on select homes. Renderings are artist's conception only. Rev. 11/18

**DAY RANCH**



WoodsideHomes.com  
15168 S. Cattle Dr. Bluffdale, UT 84065