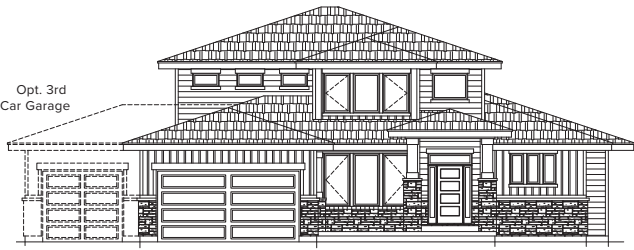




\$5k Premium
 - Includes Casement Windows
 - Hipped Roof
 - 2' Overhangs
 - 8"-10" Fascia



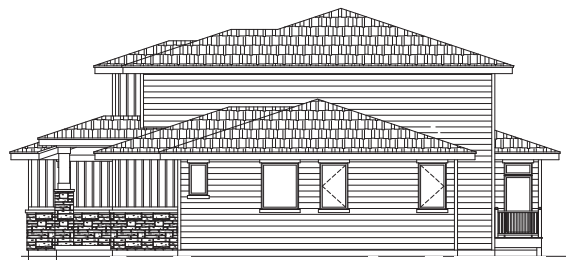
FRONT ELEVATION



REAR ELEVATION



LEFT ELEVATION

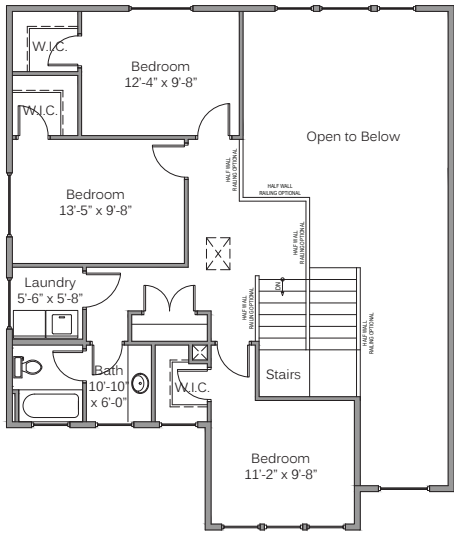


RIGHT ELEVATION

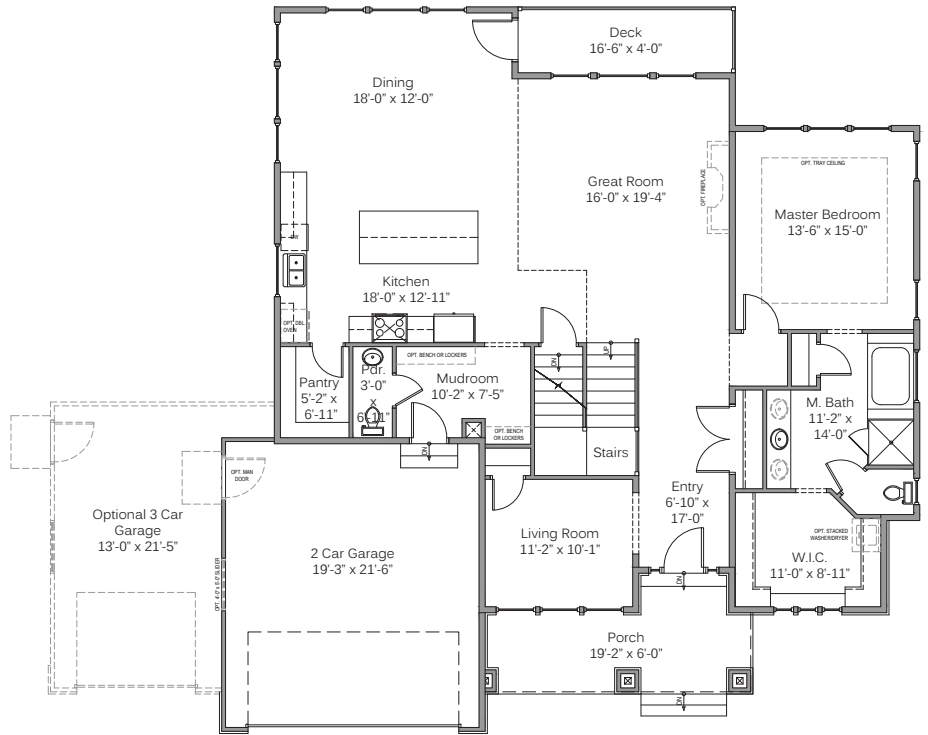
THE KAYA

- Elegant Contemporary Design
- Grand 2-Story Great Room with Optional Fireplace
- Incredible Windows Throughout
- Large Kitchen Island
- 4 Bedrooms all with Walk In Closet/ 2.5 baths
- Open Spacious Kitchen, Dining, & Great Room
- Master on Main Level w/Fantastic Master Walk In Closet

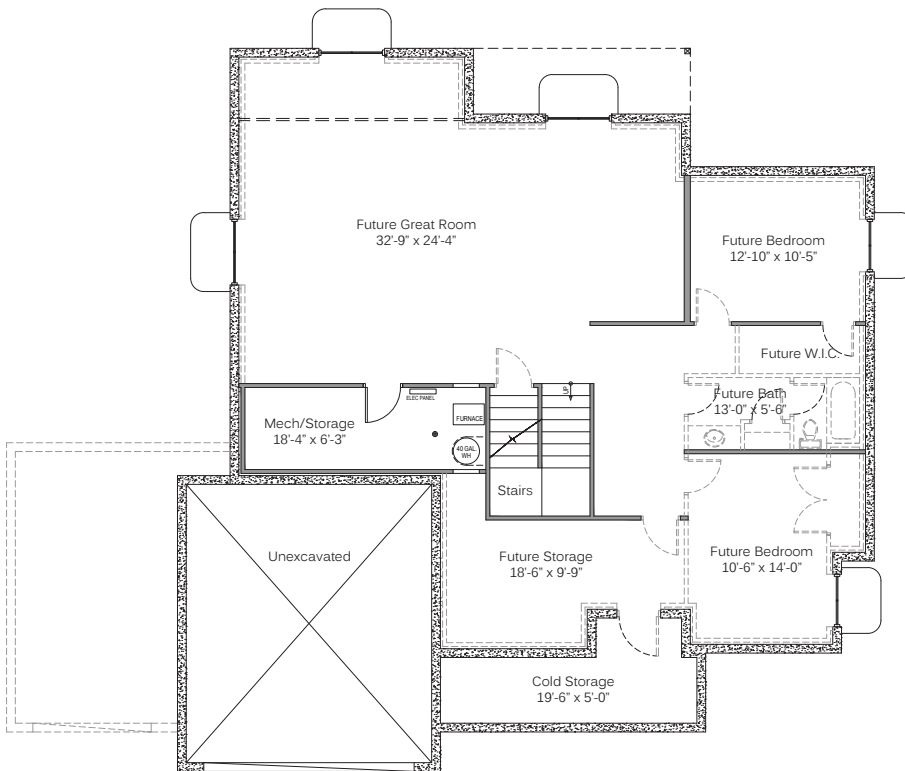
Overall dimensions:	W: 66'-0" x D: 55'-0"
Finished square feet:	2,573
Unfinished square feet:	1,946
Total square feet:	4,519



UPPER FLOOR



MAIN FLOOR



BASEMENT FLOOR