

JUNIPER II

Two Story • 1,511 Finished Sq.Ft. • 1,970 Total Sq.Ft. • 3 Bedrooms • 2-1/2 Bath • Great Room • 2-Car Garage



A



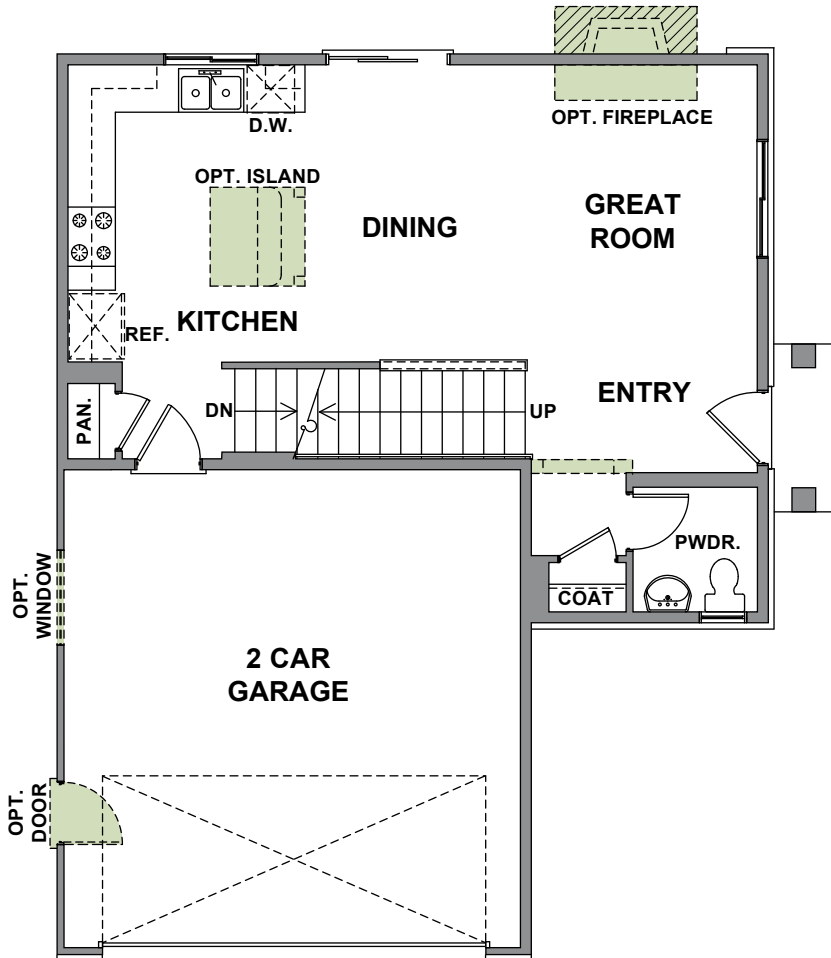
B



C



D



FIRST FLOOR PLAN
594 Sq.Ft.

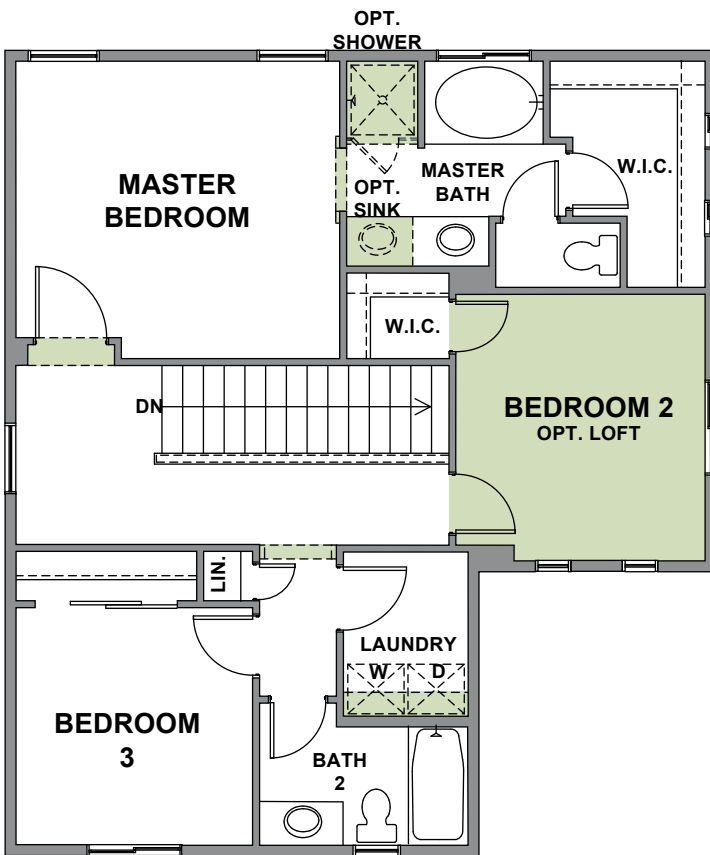


Woodside Homes reserves the right to change elevations, specifications, materials and prices without notice. All square footages are approximate. Window location, porches, ceiling heights and room dimensions vary per elevation. The availability of certain options is subject to construction status and schedule. Optional features may be predetermined and included at additional cost on select homes. Renderings are artist's conception only.

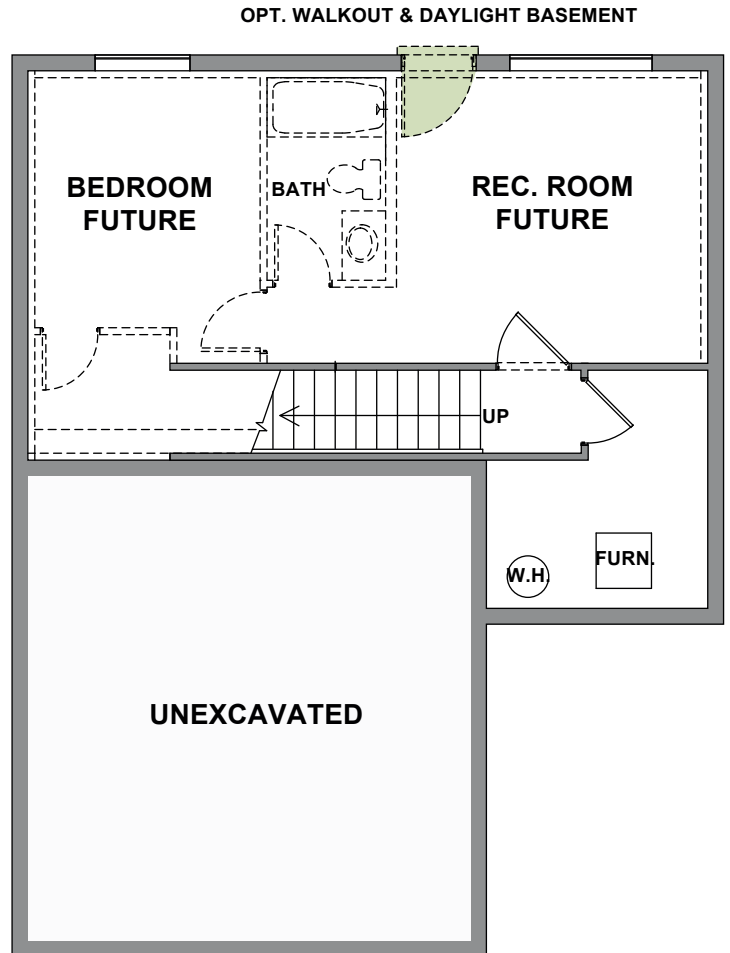


JUNIPER II

Two Story • 1,511 Finished Sq.Ft. • 1,970 Total Sq.Ft. • 3 Bedrooms • 2-1/2 Bath • Great Room • 2-Car Garage



SECOND FLOOR PLAN
852 Sq.Ft.



BASEMENT FLOOR PLAN
65 Sq.Ft. Finished
459 Sq.Ft. Unfinished



Woodside Homes reserves the right to change elevations, specifications, materials and prices without notice. All square footages are approximate. Window location, porches, ceiling heights and room dimensions vary per elevation. The availability of certain options is subject to construction status and schedule. Optional features may be predetermined and included at additional cost on select homes. Renderings are artist's conception only.

