

HIGHLAND TRADITIONAL 2016

BASEMENT

SQUARE FOOTAGE

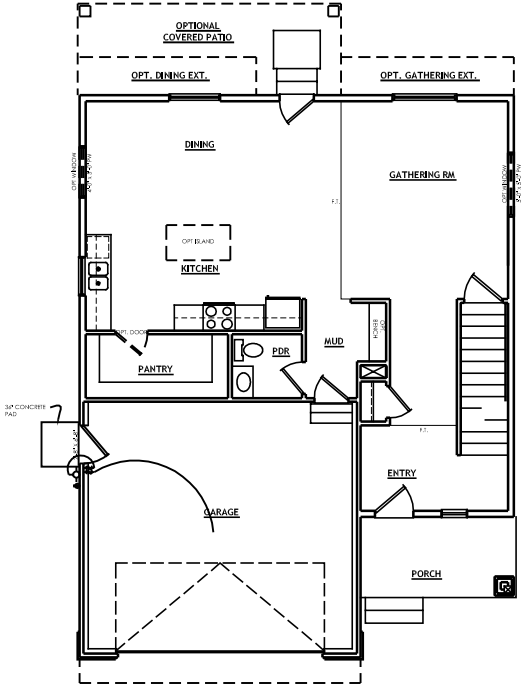
3,071 Total | 2,229 Finished | 842 Unfinished

DIMENSIONS

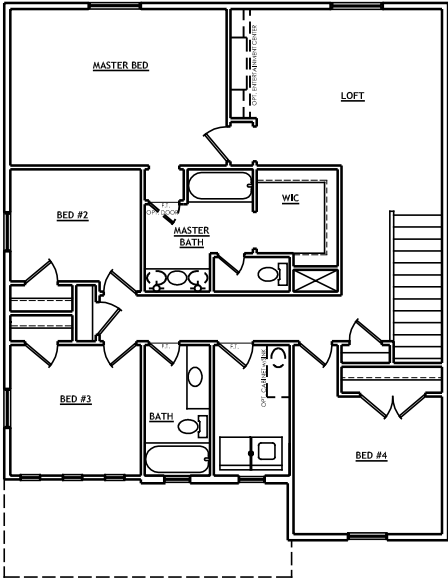
34'-0" Width | 44'-0" Depth



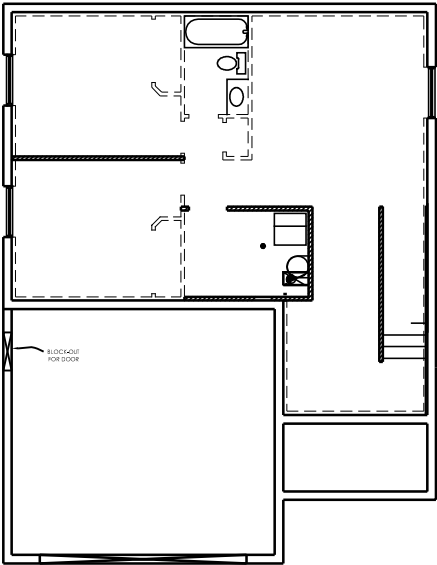
FRONT ELEVATION



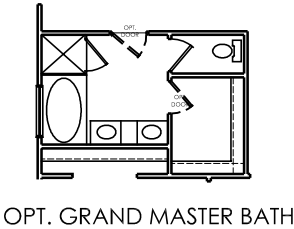
MAIN LEVEL (OPT. 9'-0" CEILING)



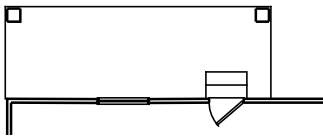
UPPER FLOOR



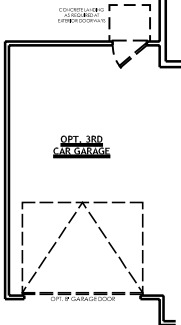
UNFINISHED BASEMENT (OPT. 9'-0" WALLS)



OPT. GRAND MASTER BATH



OPT. COVERED PATIO



OPT. 3RD CAR GARAGE

PLEASE NOTE: Square footage and measurements noted are approximate. All drawings of exteriors and floor plans are artist's renditions and may vary from actual product. Plans are subject to change to comply with city ordinances. Placement of home on lot is done at seller's discretion. All information on this sheet is subject to change without notice.

