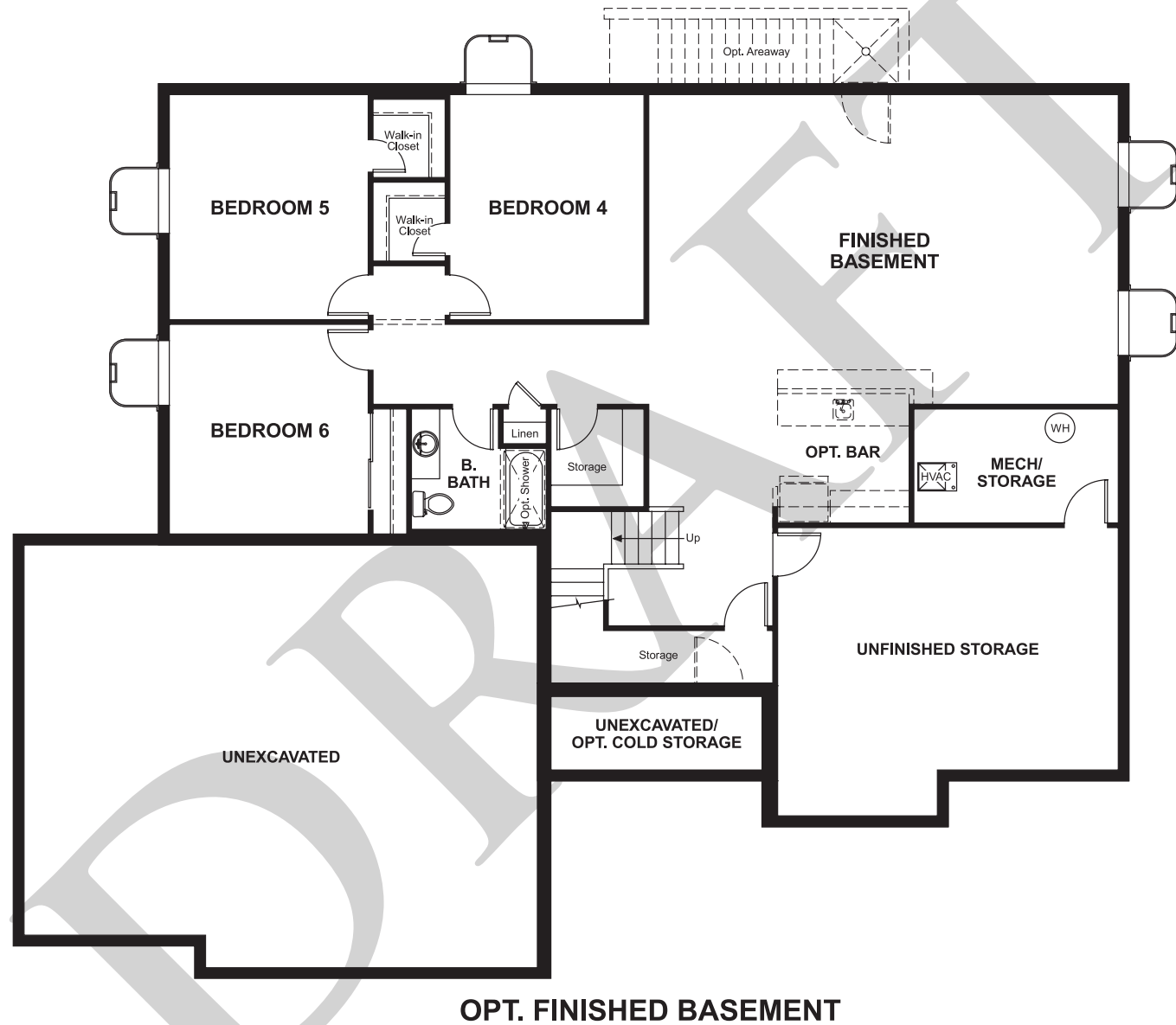


Sunset Pointe
HARMONY

Approx. square feet: 2,230
Stories: 1
Bedrooms: 3 - 6

Garage: 3-car
Plan Number: U759

Floor Plan
Basement



COMMUNITY LOCATION
7300 West 13483 South
Herriman, UT 84096
801-545-3429

HOME GALLERY
849 West Levoy Drive, Suite 108
Salt Lake City, UT 84123
801-545-3435



Sunset Pointe
HARMONY



Elevation A

Available elevations:



Elevation A



Elevation B

Approx. square feet: 2,230
Stories: 1
Bedrooms: 3 - 6
Garage: 3-car
Plan Number: U759

The ranch-style Harmony was designed for entertaining, with a charming covered front porch, an expansive great room with vaulted ceiling and optional fireplace and an impressive kitchen with a walk-in pantry, center island, adjacent dining room and optional gourmet features. Other highlights include versatile flex space, convenient powder and laundry rooms, a lavish master suite with a walk-in closet and private bath, and a 3-car garage. Personalize this plan with a covered patio and finished basement with three additional bedrooms!

COMMUNITY LOCATION
7300 West 13483 South
Herriman, UT 84096
801-545-3429

HOME GALLERY
849 West Levoy Drive, Suite 108
Salt Lake City, UT 84123
801-545-3435

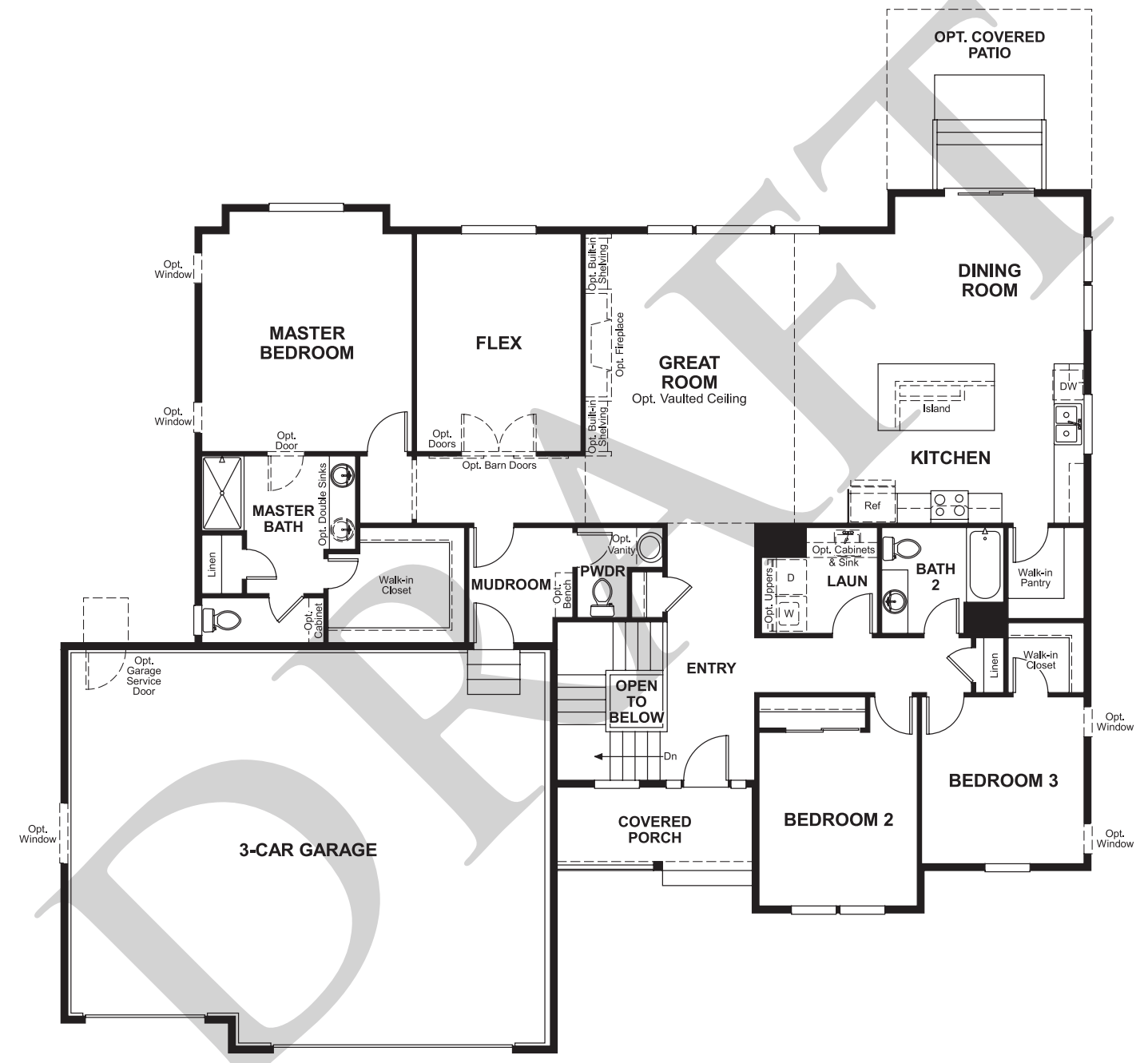


Sunset Pointe
HARMONY

Approx. square feet: 2,230
Stories: 1
Bedrooms: 3 - 6

Garage: 3-car
Plan Number: U759

Floor Plan
Main Floor



Floor Plan
Main Floor Options

