

Hanbury

One-Story • 1,633 Finished Sq. Ft. • 3,084 Total Sq. Ft. • 3-5 Bedrooms • 2-3 Baths
Opt. Study • Opt. Covered Patio • 2 Car Garage



A



B



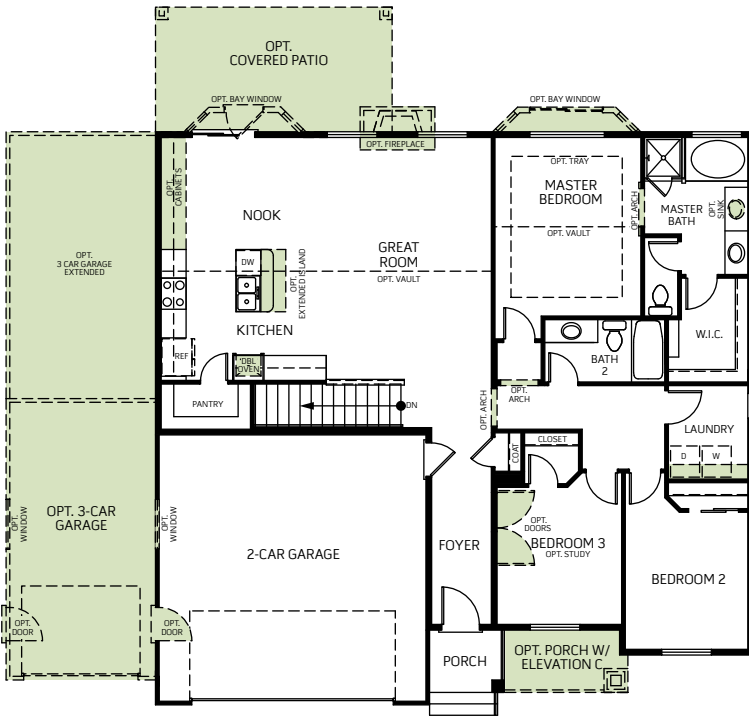
C

Woodside Homes reserves the right to change elevations, specifications, materials and prices without notice. All square footages are approximate. Window location, porches, ceiling heights and room dimensions vary per elevation. The availability of certain options is subject to construction status and schedule. Optional features may be predetermined and included at additional cost on select homes. Renderings are artist's conception only. Rev. 01/18

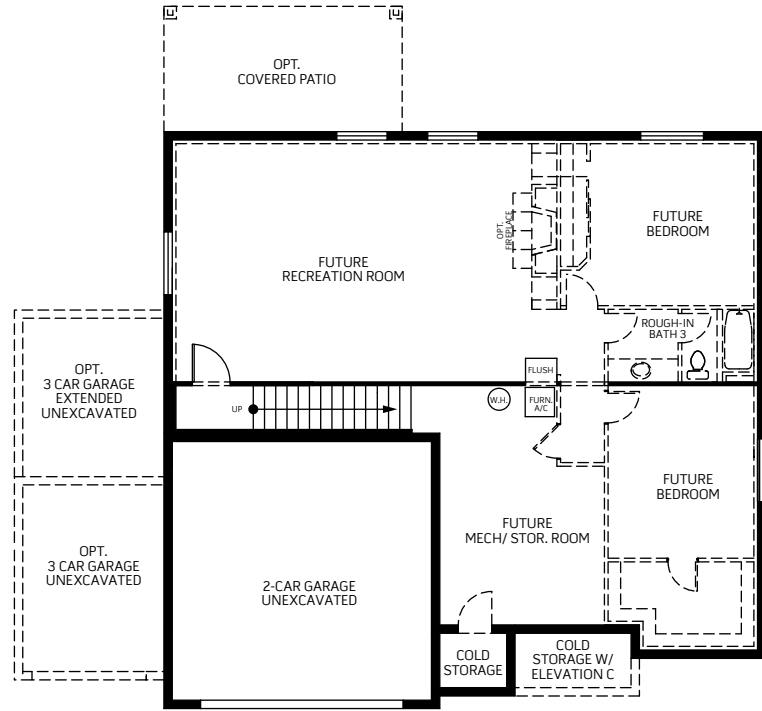


Hanbury

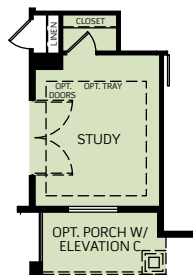
One-Story • 1,633 Finished Sq. Ft. • 3,084 Total Sq. Ft. • 3-5 Bedrooms • 2-3 Baths
Opt. Study • Opt. Covered Patio • 2 Car Garage



FIRST FLOOR
1,601 Sq. Ft.



BASEMENT PLAN
32 Sq. Ft. Finished
1,451 Sq. Ft. Unfinished



OPT. STUDY

Woodside Homes reserves the right to change elevations, specifications, materials and prices without notice. All square footages are approximate. Window location, porches, ceiling heights and room dimensions vary per elevation. The availability of certain options is subject to construction status and schedule. Optional features may be predetermined and included at additional cost on select homes. Renderings are artist's conception only. Rev. 01/18

