



HARVARD

SPECIFICATIONS

TOTAL SQFT:4,226
 Optional Bonus SQFT:482
 Finished SQFT:2,101
 Unfinished SQFT:2,125
 Bed: 3/5 | Bath: 2/3
 Width: 49'-4" | Depth: 65'

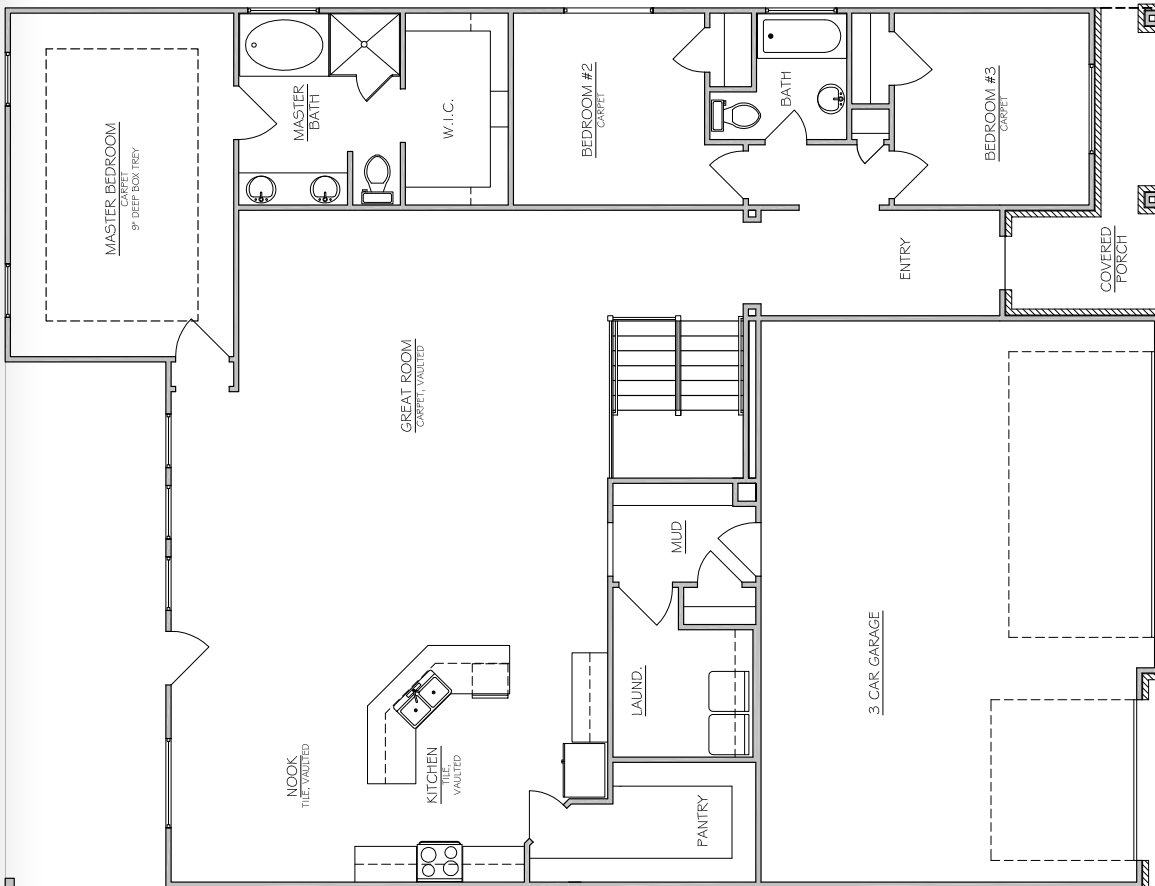
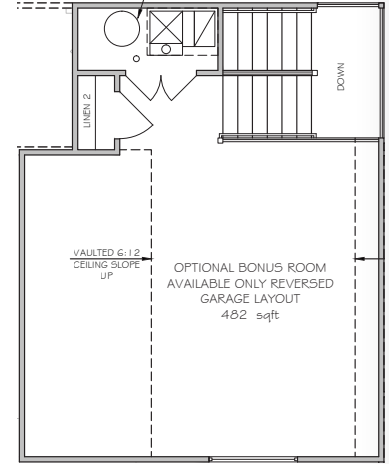
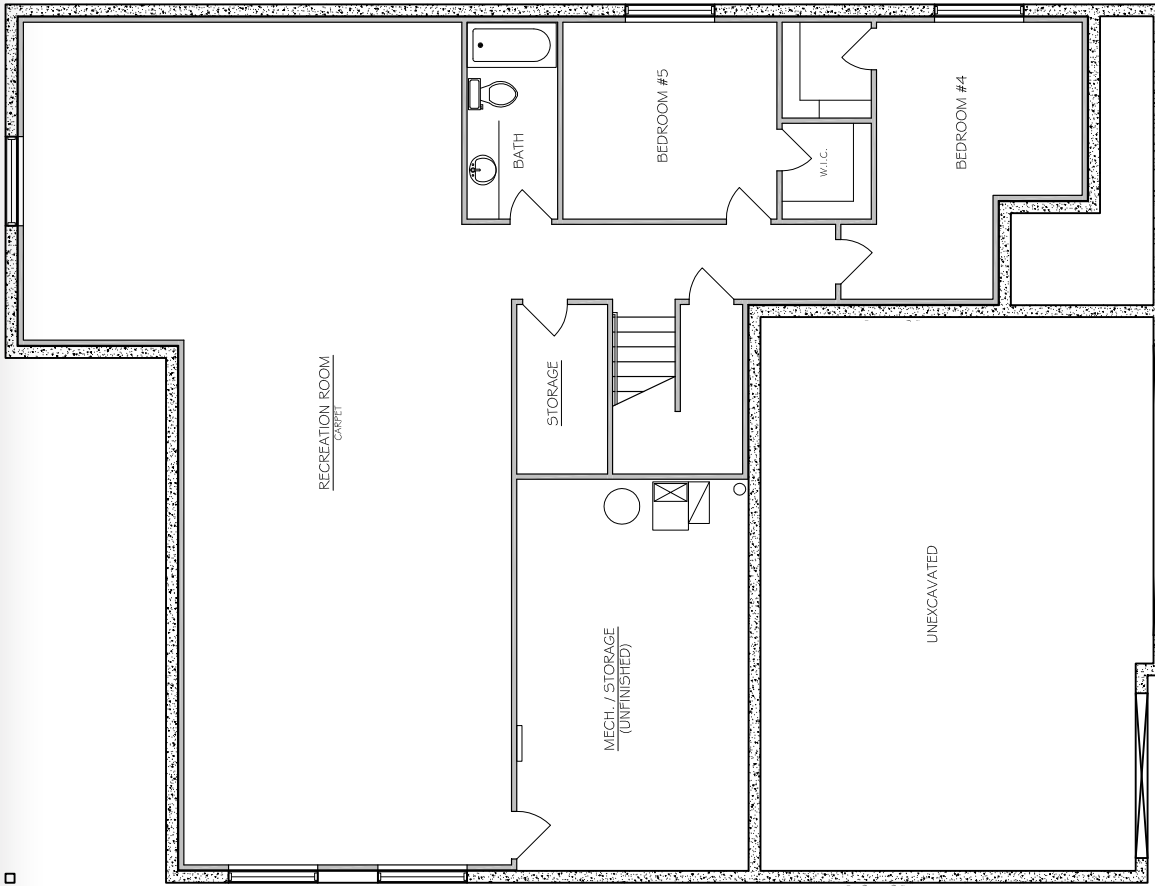


SEE THE 3D TOUR OF THE HARVARD
www.NilsonHomes.com/HARVARD



Nilson Homes has a wide variety of home designs, model homes and communities throughout Weber and Davis Counties. Please contact your New Home Sales Representative today to find out more about building your future home.





* Plans and square footage are approximate and subject to change. Prices change without notice. Renderings are intended for artistic purposes only. Other amenities available.