



HAMPTON

SPECIFICATIONS

TOTAL SQFT:.....3,590
 Finished SQFT:1,742
 Unfinished SQFT:1,848
 Bed: 4/7 | Bath: 2/3
 Width: 52'-6" | Depth: 45'



SEE THE 3D TOUR OF THE HAMPTON
www.NilsonHomes.com/HAMPTON

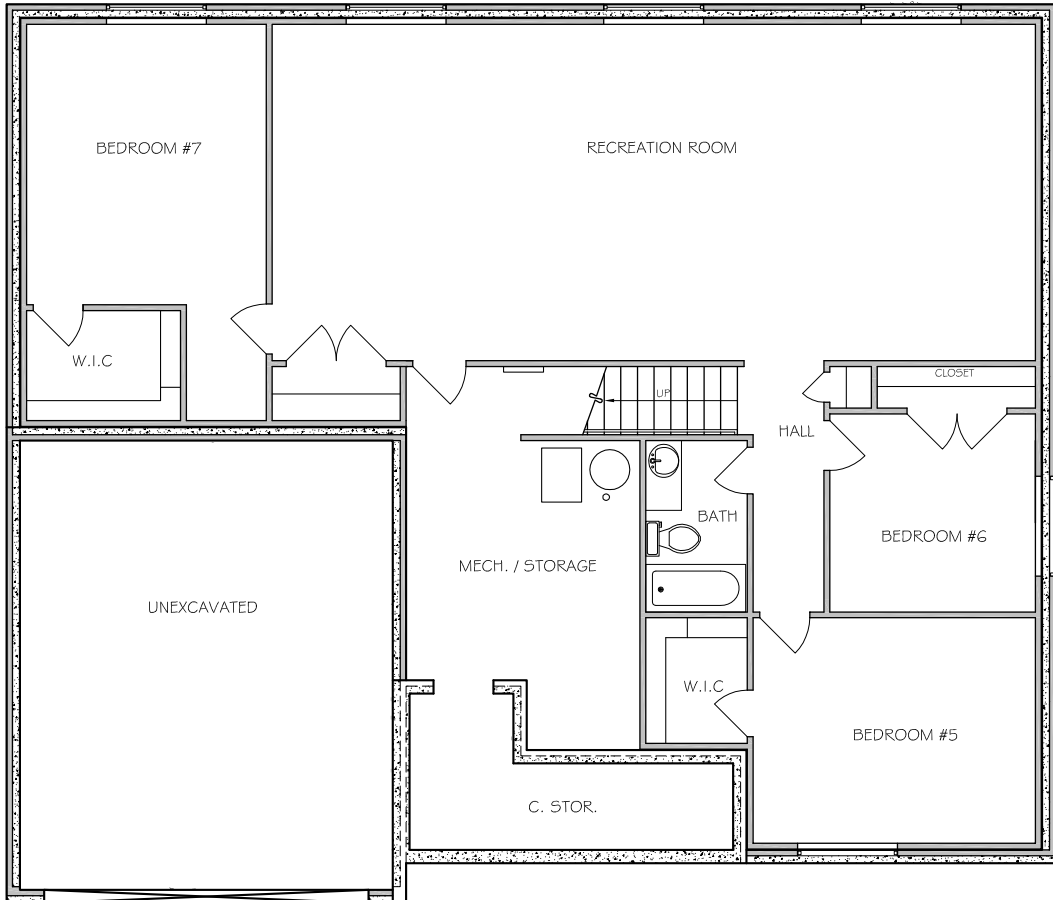
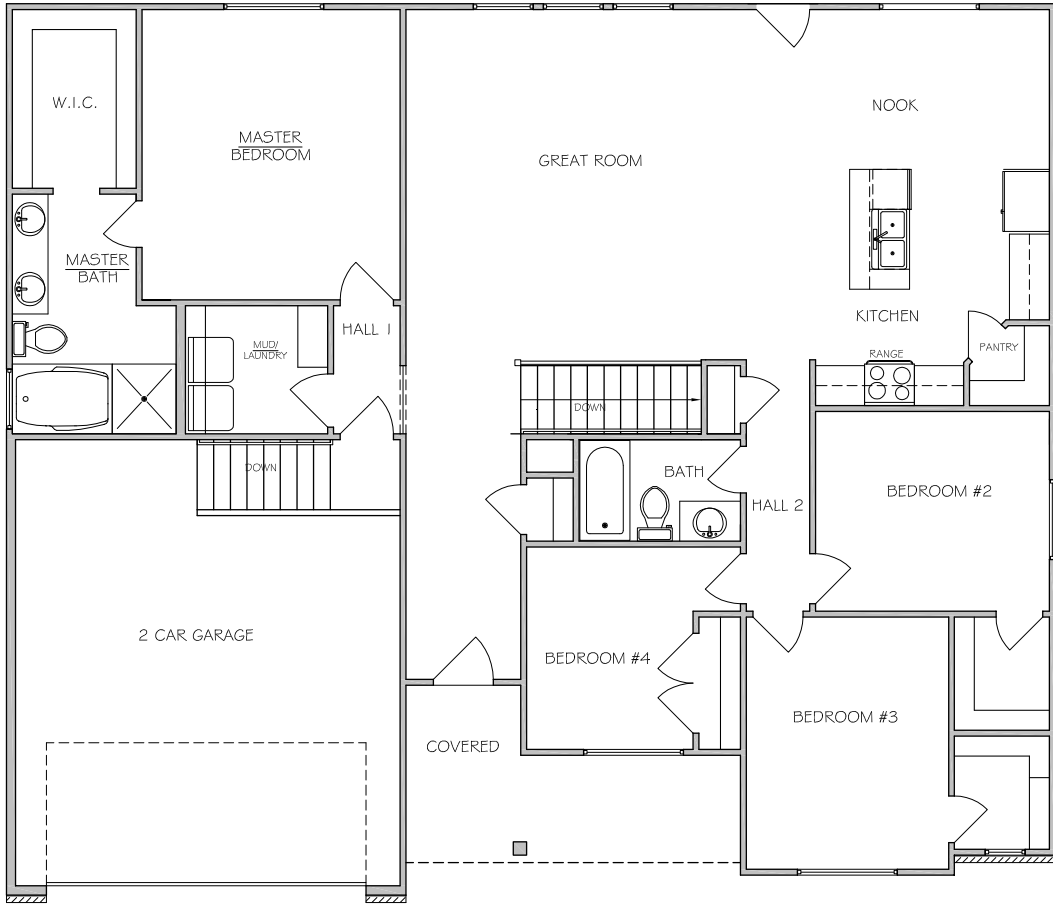


Nilson Homes has a wide variety of home designs, model homes and communities throughout Weber and Davis Counties. Please contact your New Home Sales Representative today to find out more about building your future home.

GephardtApproved

[Facebook.com/NilsonHomes](https://www.facebook.com/NilsonHomes)

[YouTube.com/NilsonHomes](https://www.youtube.com/NilsonHomes)



* Plans and square footage are approximate and subject to change. Prices change without notice. Renderings are intended for artistic purposes only. Other amenities available.