



# HAMILTON

## SPECIFICATIONS

TOTAL SQFT:.....4,582  
 Finished SQFT: .....2,789  
 Unfinished SQFT: .....1,793  
 Bed: 4/6 | Bath: 2.5/3.5  
 Width: 68' | Depth: 46'-4"

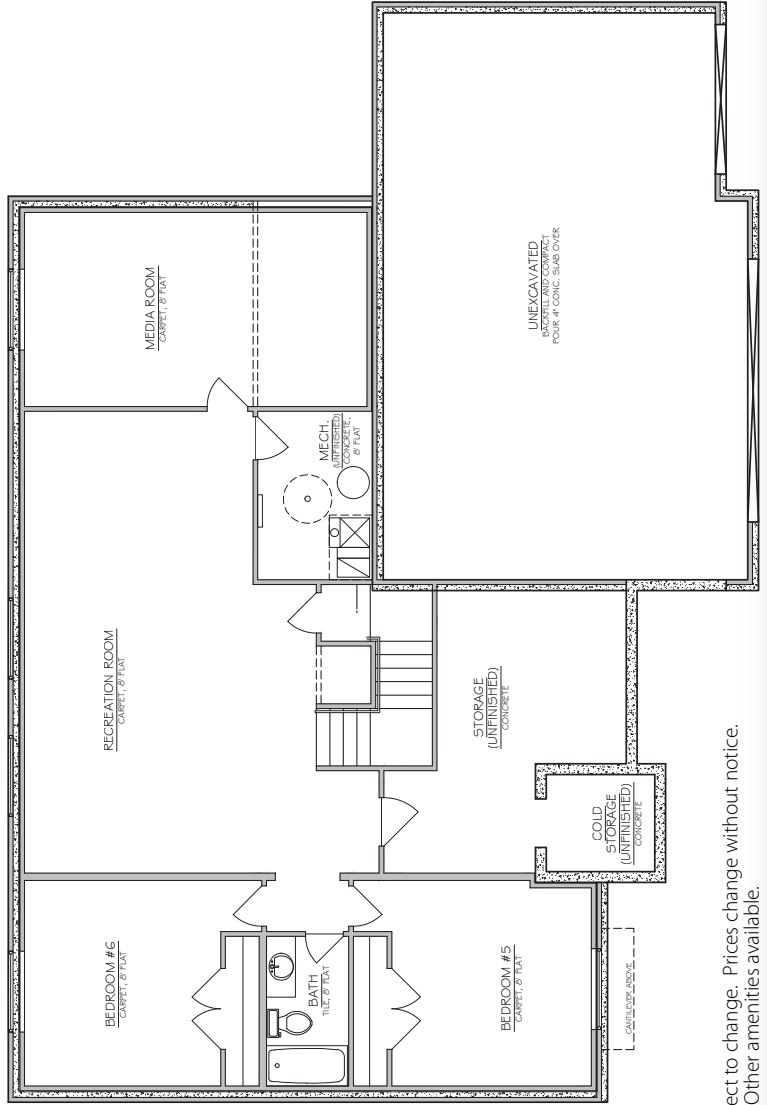
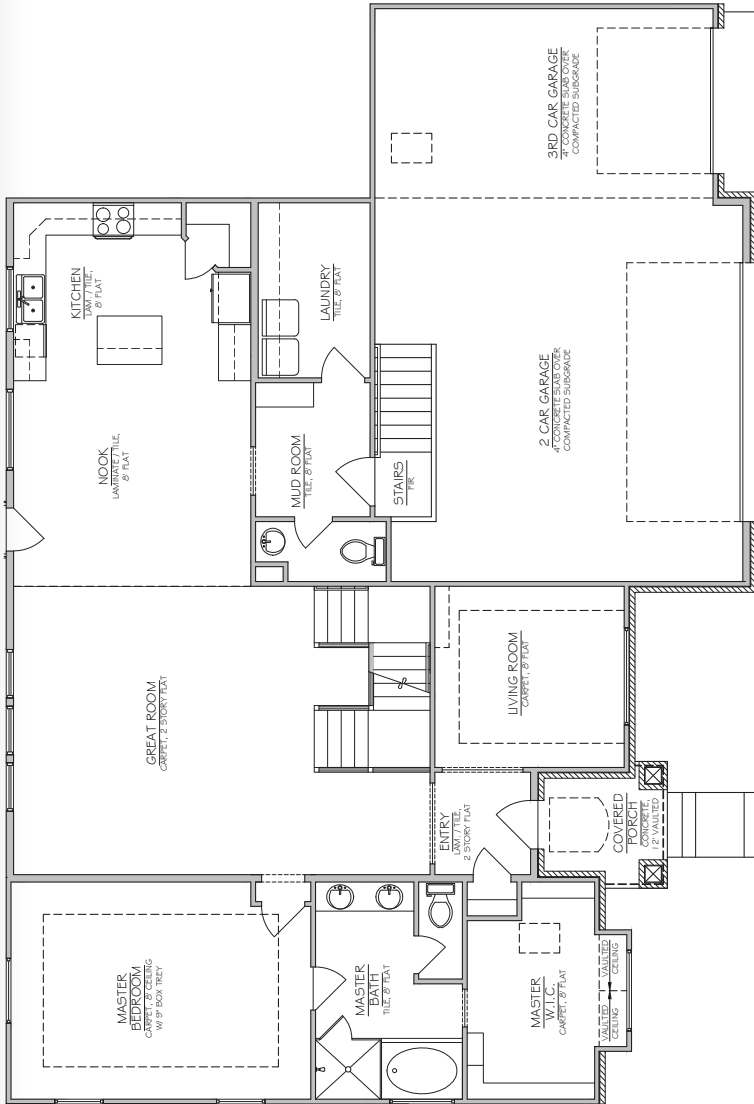
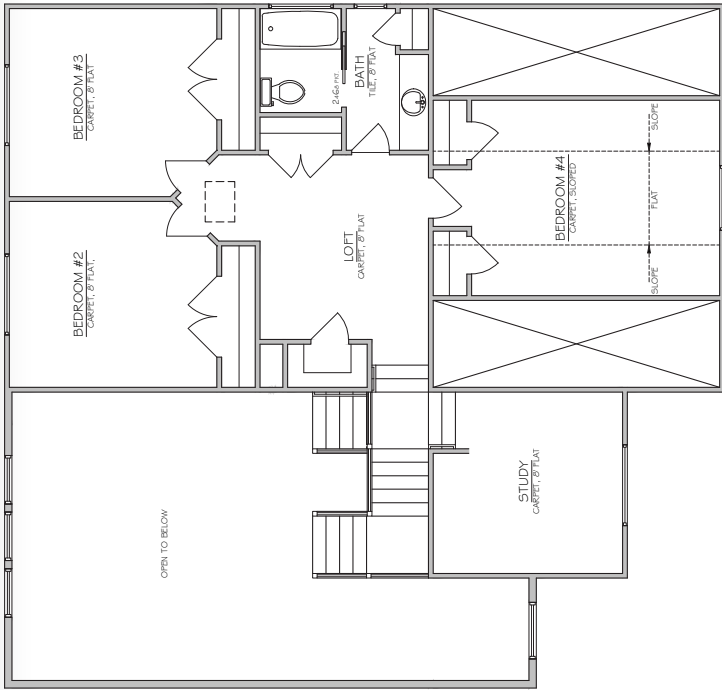


SEE THE 3D TOUR OF THE HAMILTON  
[www.NilsonHomes.com/HAMILTON](http://www.NilsonHomes.com/HAMILTON)



Nilson Homes has a wide variety of home designs, model homes and communities throughout Weber and Davis Counties. Please contact your New Home Sales Representative today to find out more about building your future home.





\* Plans and square footage are approximate and subject to change. Prices change without notice. Renderings are intended for artistic purposes only. Other amenities available.