

**Ellsworth**

Two-story • 2,986 Finished Sq. Ft. • 4-6 Bedrooms • 2.5 - 3.5 Baths • Open Great Room • Living Room • Den • Master on Main Level • Loft • Opt. Extended Nook • Opt. Bonus Room • Opt Covered Patio • 2 - 3 Car Garage



A



B



D

Woodside Homes reserves the right to change elevations, specifications, materials and prices without notice. All square footages are approximate. Window location, porches, ceiling heights and room dimensions vary per elevation. The availability of certain options is subject to construction status and schedule. Optional features may be predetermined and included at additional cost on select homes. Renderings are artist's conception only. Rev. 07/18

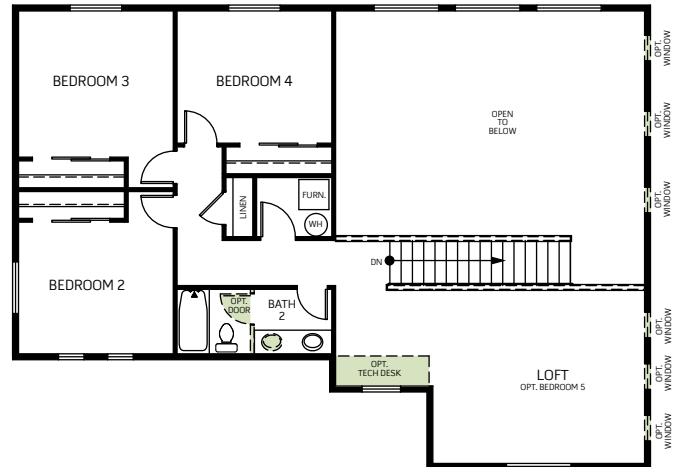


**Ellsworth**

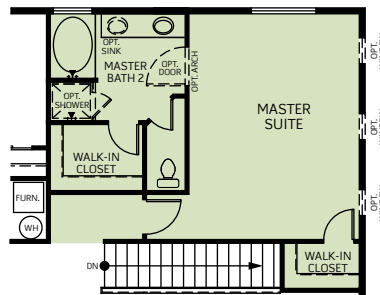
Two-story • 2,986 Finished Sq. Ft. • 4-6 Bedrooms • 2.5 - 3.5 Baths • Open Great Room • Living Room • Den • Master on Main Level • Loft • Opt. Extended Nook • Opt. Bonus Room • Opt. Covered Patio • 2 - 3 Car Garage



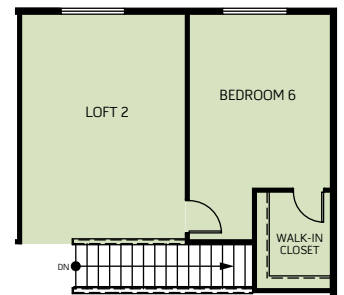
FIRST FLOOR PLAN  
1,978 Sq. Ft.



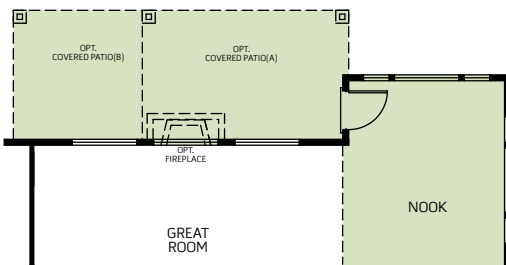
SECOND FLOOR PLAN  
1,008 Sq. Ft.



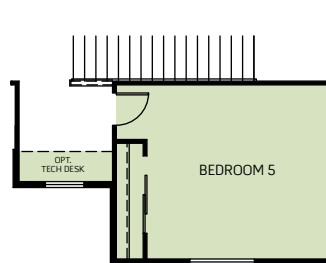
OPT. MASTER SUITE  
Adds: 470 Sq. Ft.



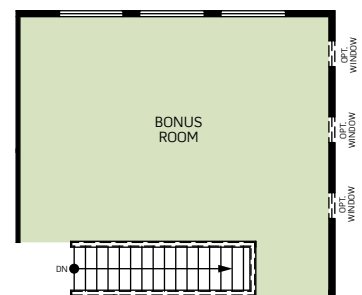
OPT. LOFT 2 & BEDROOM 6  
Adds: 470 Sq. Ft.



OPT. EXTENDED NOOK  
Adds: 65 Sq. Ft.



OPT. BEDROOM 5



OPT. BONUS ROOM  
Adds: 470 Sq. Ft.

Woodside Homes reserves the right to change elevations, specifications, materials and prices without notice. All square footages are approximate. Window location, porches, ceiling heights and room dimensions vary per elevation. The availability of certain options is subject to construction status and schedule. Optional features may be predetermined and included at additional cost on select homes. Renderings are artist's conception only. Rev. 07/18

