



# McClelland Enclave

## *Dexter 1*

SF 2,584 | 3 bed + Loft | 2.5 Bathrooms | 2 Car Garage

**\$688,554**



***Lot 104 - 552 S. McClelland Street***

The flow of this well thought-out two-story is sure to please! A spacious entry with private half bath, storage access and optional drop zone afford an inviting first impression with the versatility needed for day-to-day use. Versatility continues in the open, L-shaped kitchen, dining and great room areas, with flow for every-day life and entertaining in mind. Options abound upstairs with a spacious master suite featuring a private master bath and spacious walk-in closet. Two additional bedrooms, full bath, inviting loft space and convenient laundry room complete this comfortable home.

\*Floorplans and renderings are conceptual drawings and may vary from actual plans and homes as built. Options and features may not be available on all homes and are subject to change without notice. Dimensions are approximate. Actual homes may vary from photos and/or drawings which may show upgrades and may not represent the lowest-priced homes in the community. 01/05/18



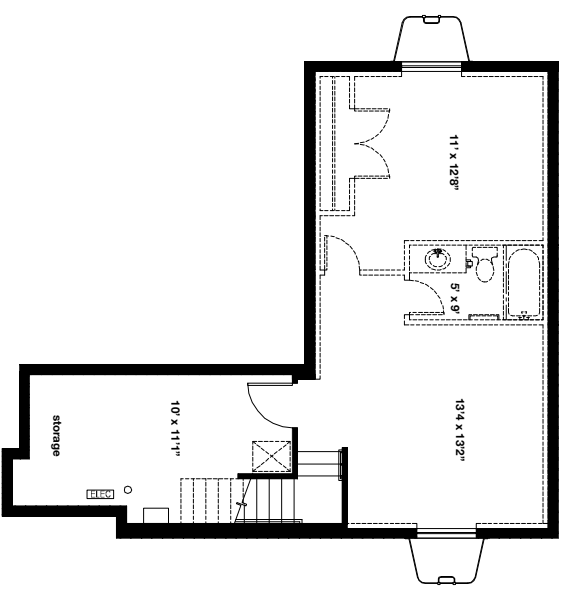
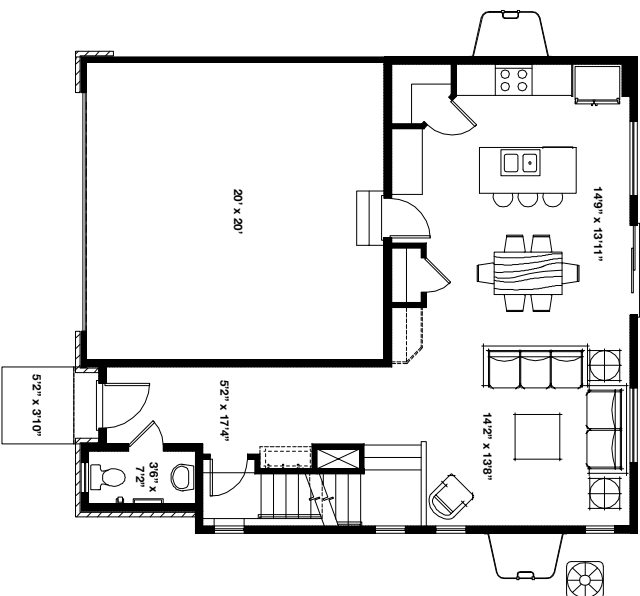
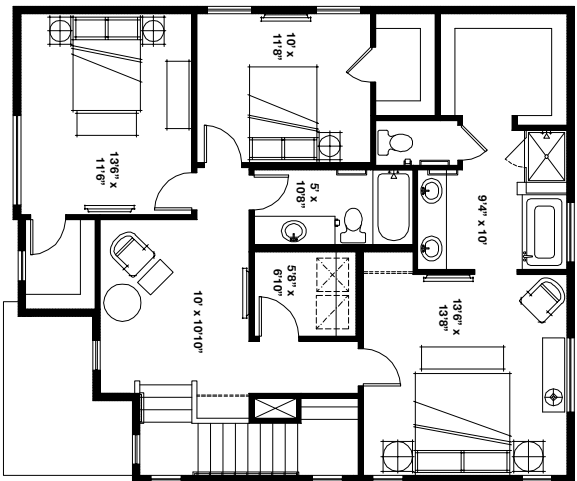
[garbetthomes.com](http://garbetthomes.com)





# McClelland Enclave Dexter 1

SF 2,603 | 3 bed + Loft | 2.5 Bathrooms | 2 Car Garage



\*Floorplans and renderings are conceptual drawings and may vary from actual plans and homes as built. Options and features may not be available on all homes and are subject to change without notice. Dimensions are approximate. Actual homes may vary from photos and/or drawings which may show upgrades and may not represent the lowest-priced homes in the community.