



Equinox *Derain*

SF 2,406 | 3 bedrooms | 2.5 Bathrooms | 2 Car Garage



The flow of this well thought-out two-story is sure to please! A spacious entry with private half bath, storage access and optional drop zone afford an inviting first impression with the versatility needed for day-to-day use. Versatility continues in the open kitchen, dining and great room areas, with flow for every-day life and entertaining in mind. Options abound upstairs with a generous master suite, two additional bedrooms, laundry room and a spacious hall bath. Additional closet options, and a quaint loft space make this home adaptable for any family.

*Floorplans and renderings are conceptual drawings and may vary from actual plans and homes as built. Options and features may not be available on all homes and are subject to change without notice. Dimensions are approximate. Actual homes may vary from photos and/or drawings which may show upgrades and may not represent the lowest-priced homes in the community. 01/05/18



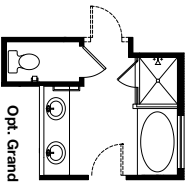
garbcthomes.com



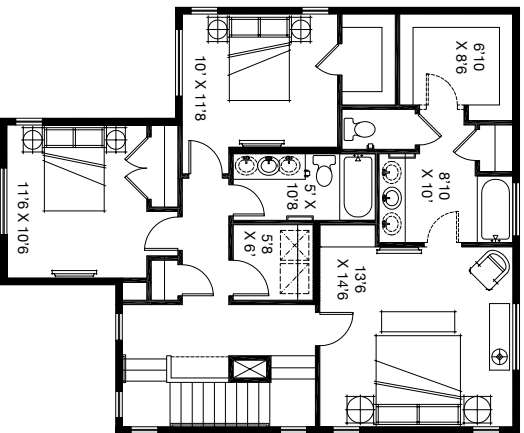


Equinox Derain

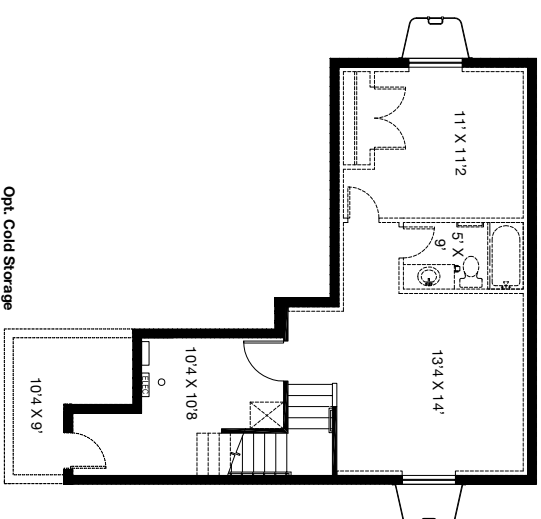
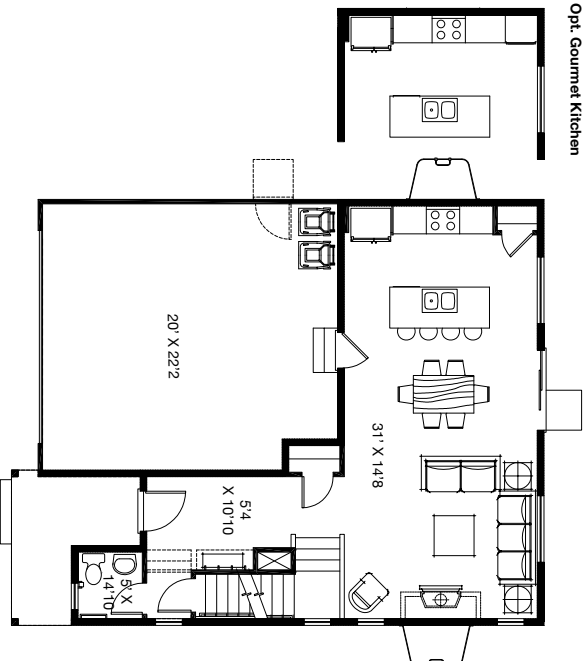
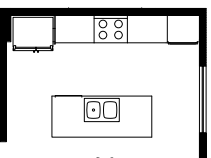
SF 2,406 | 3 bedrooms | 2.5 Bathrooms | 2 Car Garage



Opt. Grand Master Bath



Opt. Gourmet Kitchen



Opt. Cold Storage

*Floorplans and renderings are conceptual drawings and may vary from actual plans and homes as built. Options and features may not be available on all homes and are subject to change without notice. Dimensions are approximate. Actual homes may vary from photos and/or drawings which may show upgrades and may not represent the lowest-priced homes in the community.