



DENALI

SPECIFICATIONS

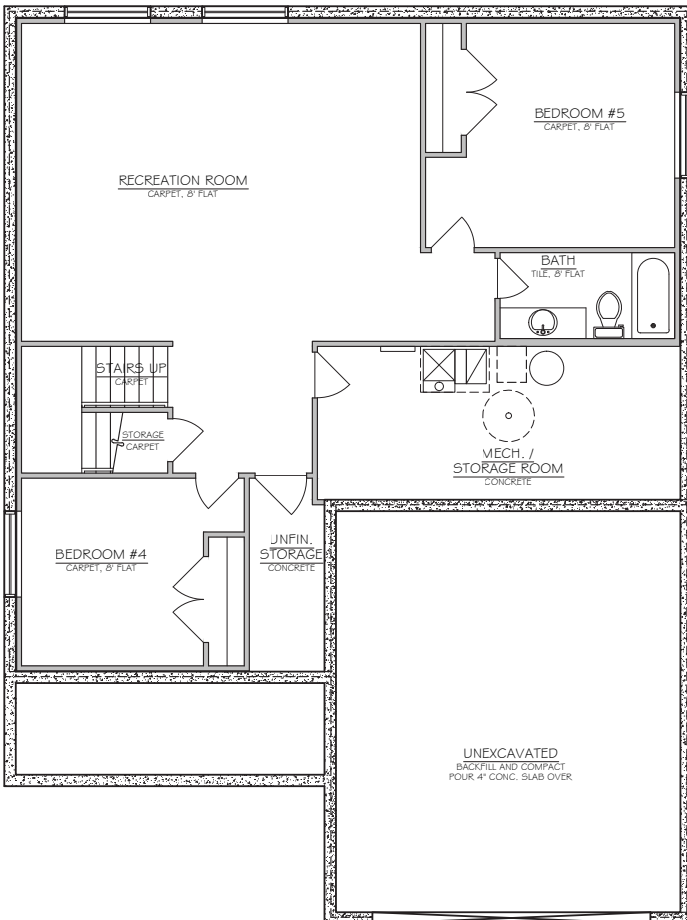
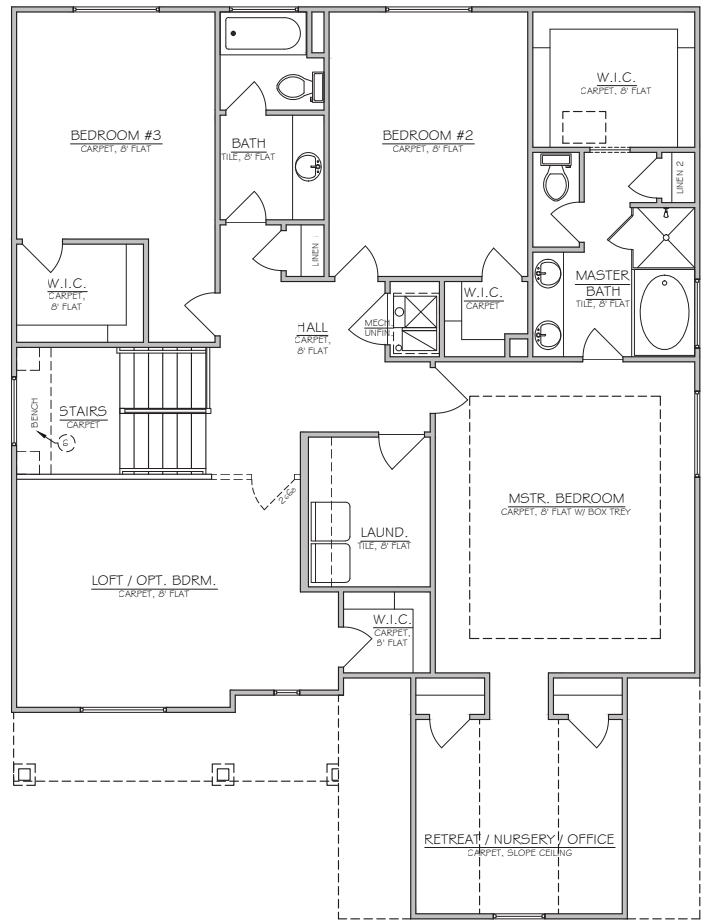
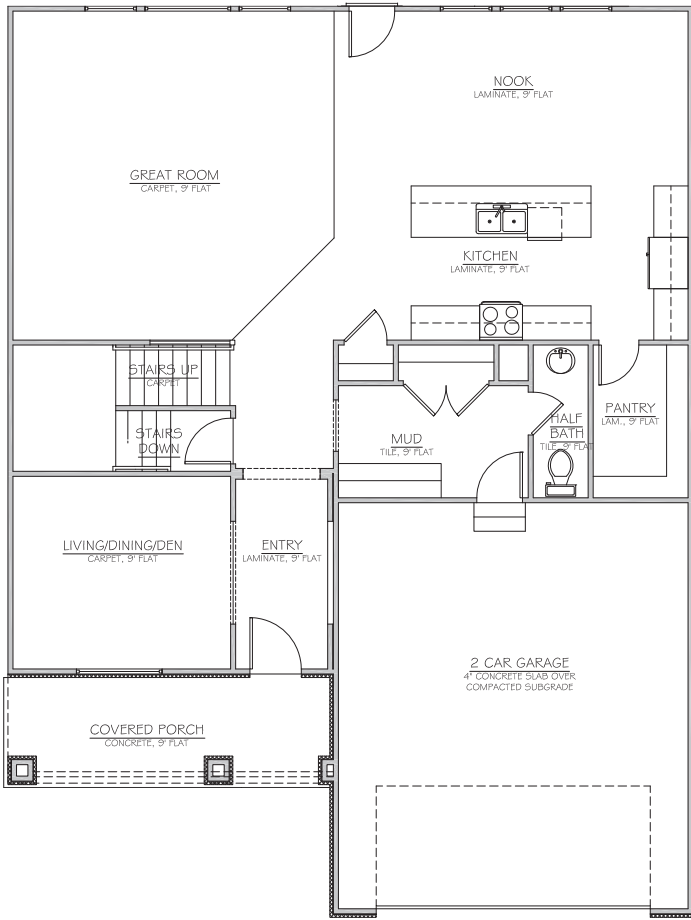
TOTAL SQFT:4,604
 Finished SQFT:3,120
 Unfinished SQFT:1,484
 Bed: 3/5 | Bath: 2.5/3.5
 Width: 40' | Depth: 53'-4"



SEE THE 3D TOUR OF THE DENALI
www.NilsonHomes.com/DENALI



Nilson Homes has a wide variety of home designs, model homes and communities throughout Weber and Davis Counties. Please contact your New Home Sales Representative today to find out more about building your future home.



* Plans and square footage are approximate and subject to change. Prices change without notice. Renderings are intended for artistic purposes only. Other amenities available.