



# Equinox Crawford

SF 2,651 | 3 bedrooms | 2.5 Bathrooms | 2 Car Garage



The Crawford leaves no space wasted! A large front porch allows for exterior space to enjoy your home, while also providing an extension to the home's interior entry. The sizable great room leads the way into the well-appointed dining and kitchen space. The kitchen's open L-shaped counter and island, provide plenty of room for prep, while still allowing for privacy from the entry. Not to disappoint the upstairs offers a roomy loft with laundry room, two bedrooms and hall bath. Rounding out this home's impressive sense of grandeur, is the master suite featuring a large master bath, two separate closets and spacious bedroom.

\*Floorplans and renderings are conceptual drawings and may vary from actual plans and homes as built. Options and features may not be available on all homes and are subject to change without notice. Dimensions are approximate. Actual homes may vary from photos and/or drawings which may show upgrades and may not represent the lowest-priced homes in the community. 01/05/18



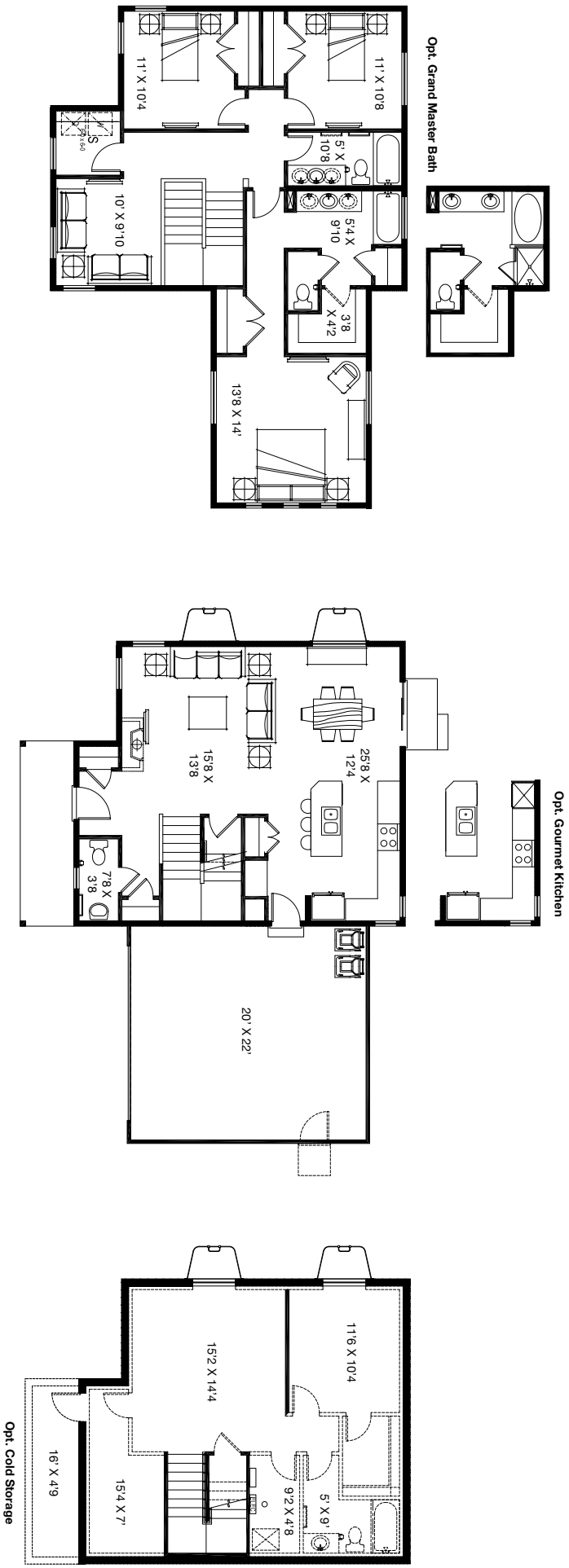
[garbcthomes.com](http://garbcthomes.com)





# Equinox Crawford

SF 2,651 | 3 bedrooms | 2.5 Bathrooms | 2 Car Garage



\*Floorplans and renderings are conceptual drawings and may vary from actual plans and homes as built. Options and features may not be available on all homes and are subject to change without notice. Dimensions are approximate. Actual homes may vary from photos and/or drawings which may show upgrades and may not represent the lowest-priced homes in the community.