



Parkway Station *Crane*

SF 2,022 | Bedrooms 3 | Bathrooms 2.5 | 2 Car Garage



The optimum Daybreak location is elevated in this dynamic four-story home. Enjoy the light and open space starting on the main floor with great room and kitchen featuring plenty of counter space and a generous walk-in pantry. The covered front porch and convenient deck off the living room make the perfect spaces to receive and entertain guests. Private, dual master suites make up the third and fourth floors with large walk-in closets, spacious baths and a fourth floor terrace. On the street level you appreciate the storage in an oversized garage and additional square footage of a flex room and option bath ready for personalization.

*Floorplans and renderings are conceptual drawings and may vary from actual plans and homes as built. Options and features may not be available on all homes and are subject to change without notice. Dimensions are approximate. Actual homes may vary from photos and/or drawings which may show upgrades and may not represent the lowest-priced homes in the community.



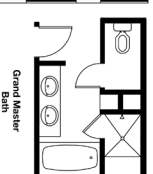
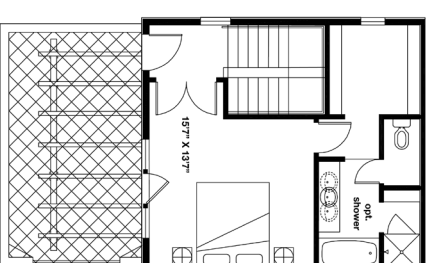
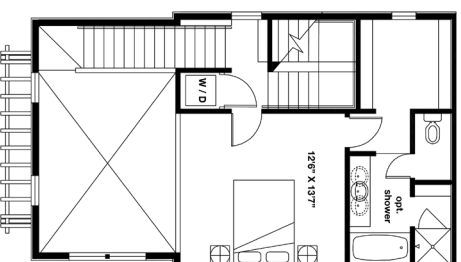
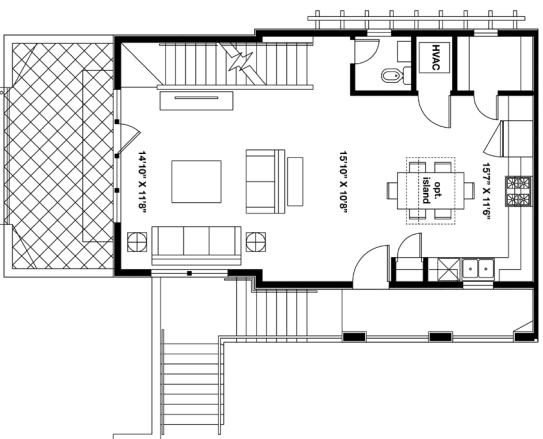
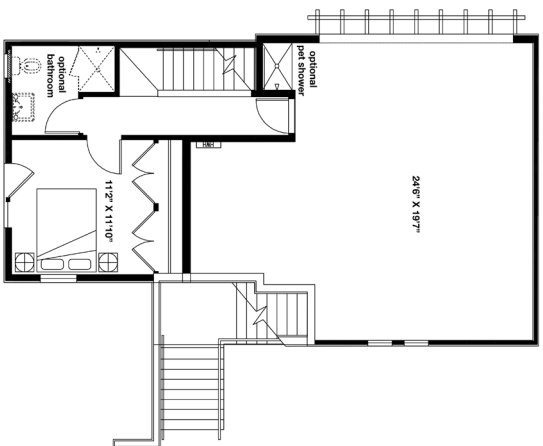
garbetthomes.com





Parkway Station Crane

SF 2,022 | Bedrooms 3 | Bathrooms 2.5 | 2 Car Garage



*Floorplans and renderings are conceptual drawings and may vary from actual plans and homes as built. Options and features may not be available on all homes and are subject to change without notice. Dimensions are approximate. Actual homes may vary from photos and/or drawings which may show upgrades and may not represent the lowest-priced homes in the community.