



CAMBRIAN

SPECIFICATIONS

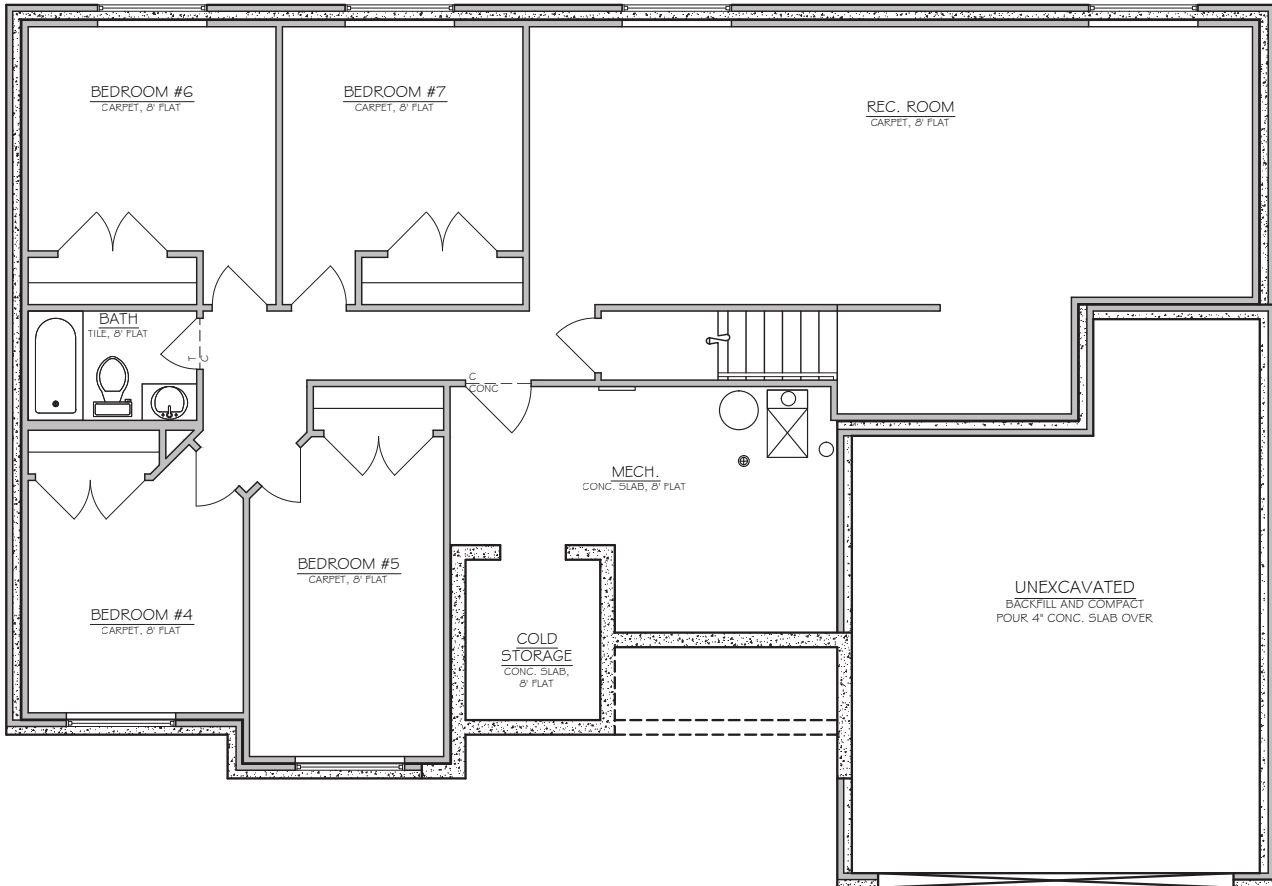
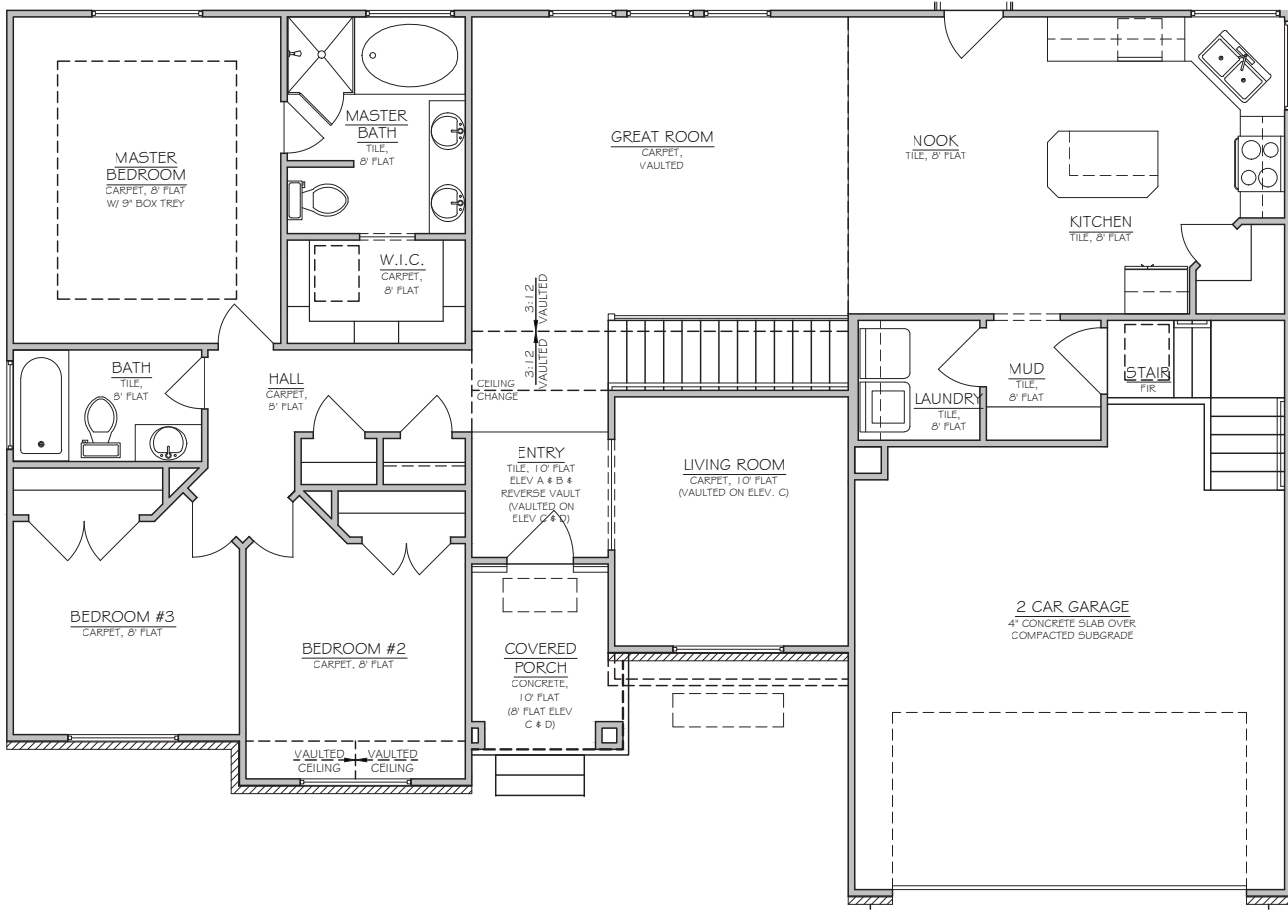
TOTAL SQFT:.....3,181
 Finished SQFT:1,532
 Unfinished Sqft:.....1,649
 Bed: 3/7 | Bath: 2/3
 Width: 58' | Depth: 40'-4"



SEE THE 3D TOUR OF THE CAMBRIAN
www.NilsonHomes.com/CAMBRIAN



Nilson Homes has a wide variety of home designs, model homes and communities throughout Weber and Davis Counties. Please contact your New Home Sales Representative today to find out more about building your future home.



* Plans and square footage are approximate and subject to change. Prices change without notice. Rendering are intended for artistic purposes only. Other amenities available.