



# McClelland Enclave

## Brody 2

SF 2,640 | 3 bedrooms | 2.5 Bathrooms | 2 Car Garage

**\$705,204**



**Lot 105 - 551 S. McClelland Street**

A home that checks all the right boxes! From the foyer, you can see the open space of the main floor. Flow from the great room to the dining nook and spacious kitchen with ample counter space and walk-in pantry. Upstairs opens onto the roomy loft, dividing the floor into two zones while providing a more casual space to hangout. To the right of the loft, the first zone offers two secondary bedrooms, full bath and large linen closet. Left of the loft, and the pinnacle of the home, the second zone is comprised of the laundry room and generous master suite showcasing a grand 5-piece master bath, dual walk-in closets and setting area.

\*Floorplans and renderings are conceptual drawings and may vary from actual plans and homes as built. Options and features may not be available on all homes and are subject to change without notice. Dimensions are approximate. Actual homes may vary from photos and/or drawings which may show upgrades and may not represent the lowest-priced homes in the community. 01/05/18



[garbetthomes.com](http://garbetthomes.com)

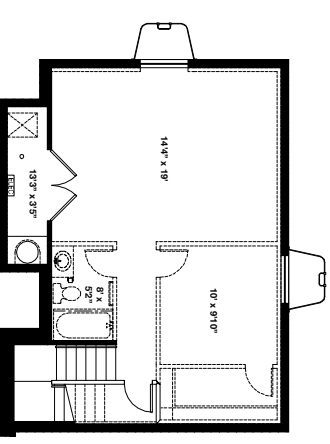
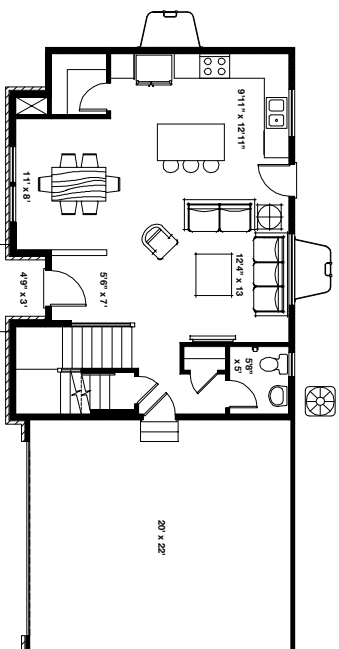
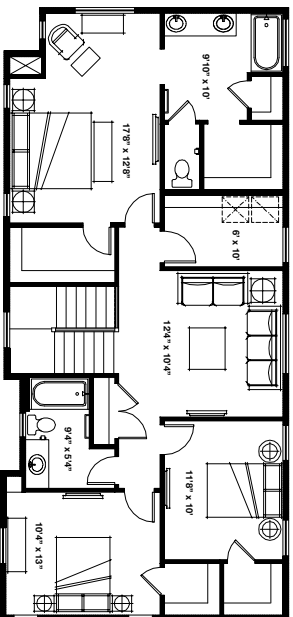




# McClelland Enclave

## Brody 2

SF 2,640 | 3 bedrooms | 2.5 Bathrooms | 2 Car Garage



\*Floorplans and renderings are conceptual drawings and may vary from actual plans and homes as built. Options and features may not be available on all homes and are subject to change without notice. Dimensions are approximate. Actual homes may vary from photos and/or drawings which may show upgrades and may not represent the lowest-priced homes in the community.