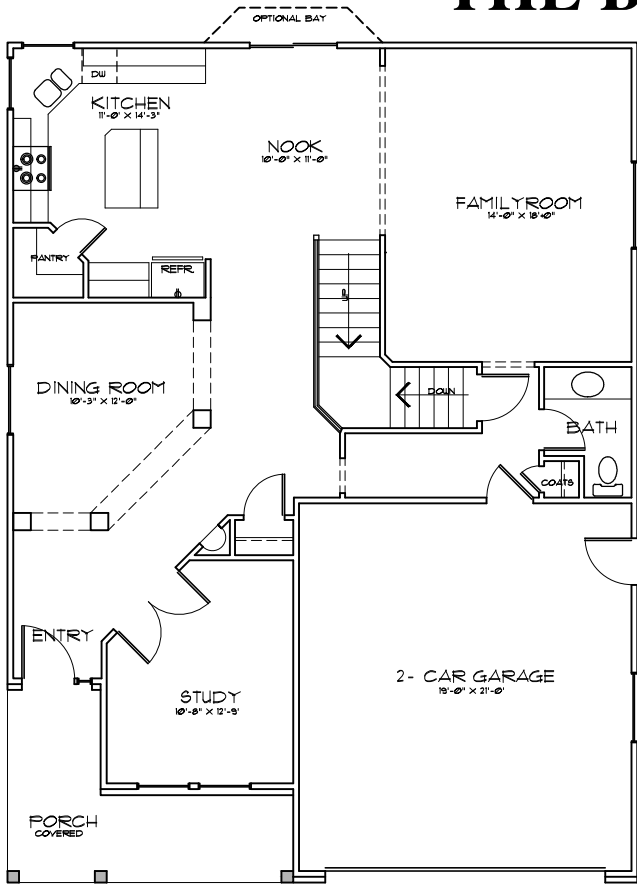
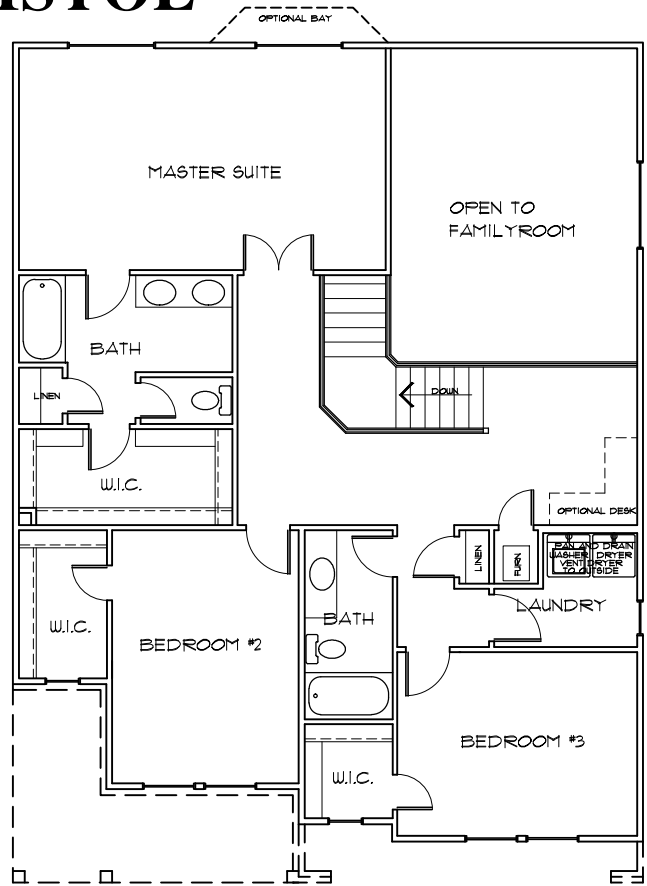


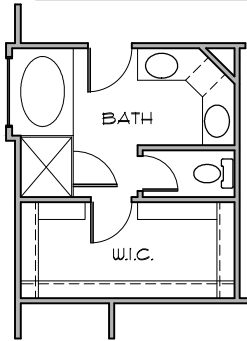
THE BRISTOL



MAIN FLOOR PLAN



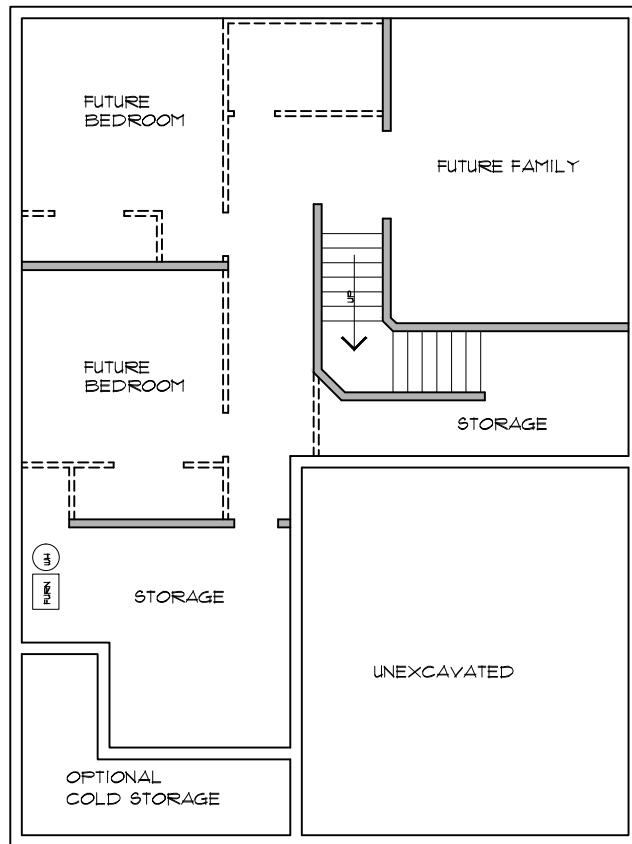
UPPER FLOOR PLAN



GRAND MASTER BATH OPT.



FIREPLACE OPTION



BASEMENT FLOOR

Main Floor	1195	Sq. Ft.
Upper Floor	1294	Sq. Ft.
Basement: Finished	24	Sq. Ft.
Unfinished	1171	Sq. Ft.
Total: Finished	3660	Sq. Ft.
Area	3684	Sq. Ft.

Overall Dimensions:
36'-0" Wide X 48'-0" Deep



HALLMARK HOMES

