



FRONT ELEVATION



(Optional Man Door Shown)

REAR ELEVATION



LEFT ELEVATION

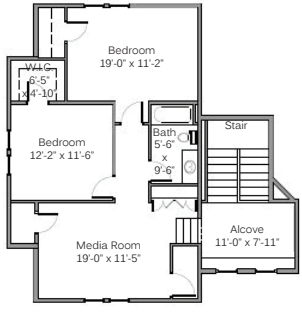


RIGHT ELEVATION

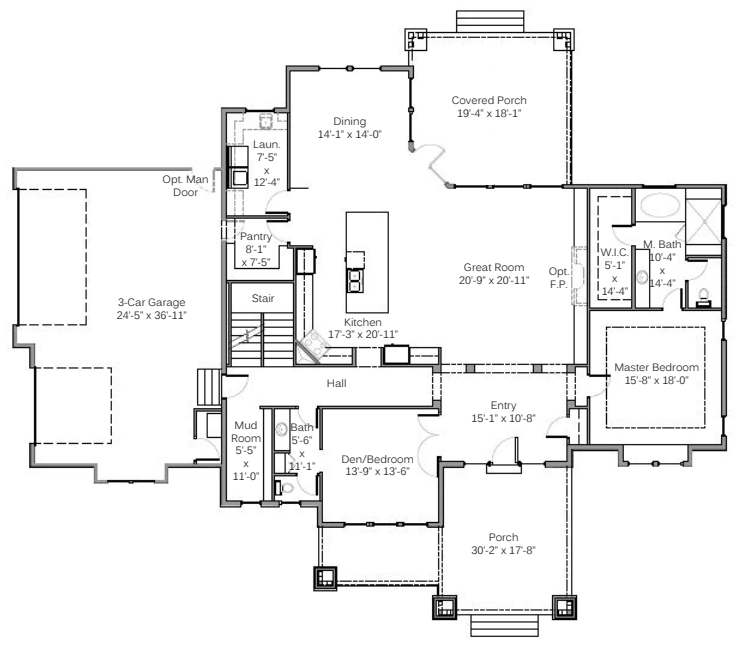
THE BRISA

- Open plan
- Main floor master bedroom
- 3 or 4 bedrooms/ 2 1/2 baths finished
- Elegant craftsman design
- Front and rear covered porch

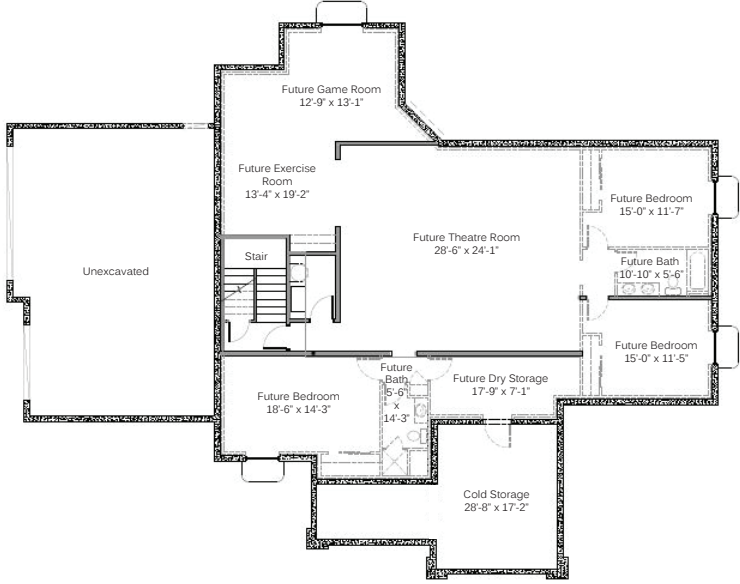
Overall dimensions:	W: 84'-6" x D: 69'-8"
Finished square feet:	3,309
Unfinished square feet:	2,805
Total square feet:	6,114



UPPER FLOOR



MAIN FLOOR



BASEMENT FLOOR