



Equinox Braun

SF 2,381 | 3 bedrooms | 2.5 Bathrooms | 2 Car Garage



The large covered porch of the Braun draws you in. A separate but still open entry allows for a space to welcome guests and gives them a look at the open space within. The great room flows into the L-shaped kitchen with island and ample counter space, as well as a proper dining space. Upstairs is designed to allow for all bedrooms to be on one floor, and still provide a private master suite. On one side of the stairs, you'll find laundry, two well sized bedrooms and hall bath. On the other side, you find the spacious master suite, with its own large master bath and generous walk-in closet.

*Floorplans and renderings are conceptual drawings and may vary from actual plans and homes as built. Options and features may not be available on all homes and are subject to change without notice. Dimensions are approximate. Actual homes may vary from photos and/or drawings which may show upgrades and may not represent the lowest-priced homes in the community. 01/05/18



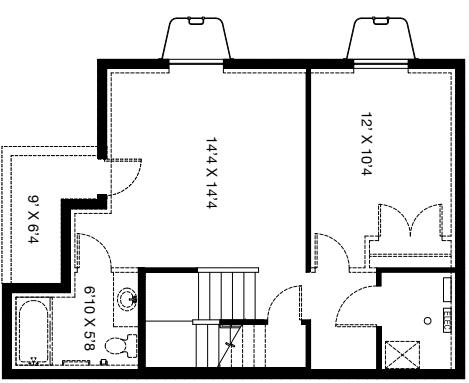
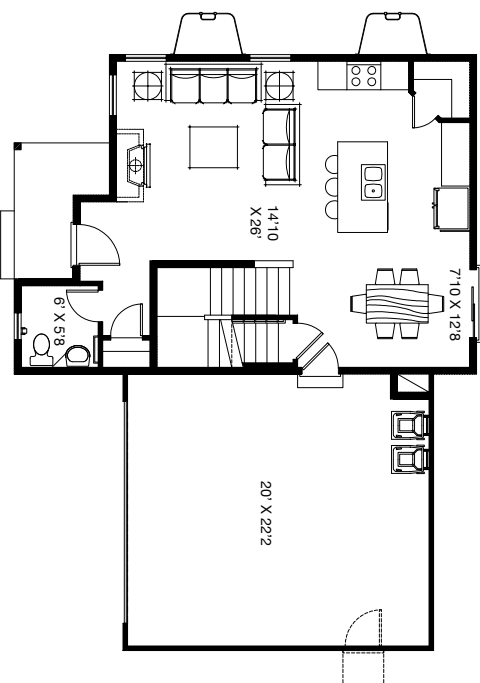
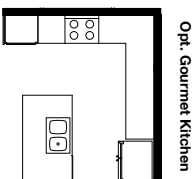
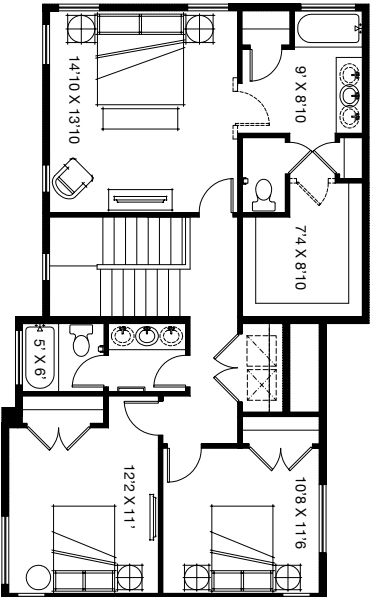
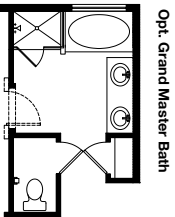
garbcthomes.com





Equinox Braun

SF 2,381 | 3 bedrooms | 2.5 Bathrooms | 2 Car Garage



Opt. Cold Storage

*Floorplans and renderings are conceptual drawings and may vary from actual plans and homes as built. Options and features may not be available on all homes and are subject to change without notice. Dimensions are approximate. Actual homes may vary from photos and/or drawings which may show upgrades and may not represent the lowest-priced homes in the community.