

# BAXTER\_TRADITIONAL\_2016

BASEMENT

SQUARE FOOTAGE

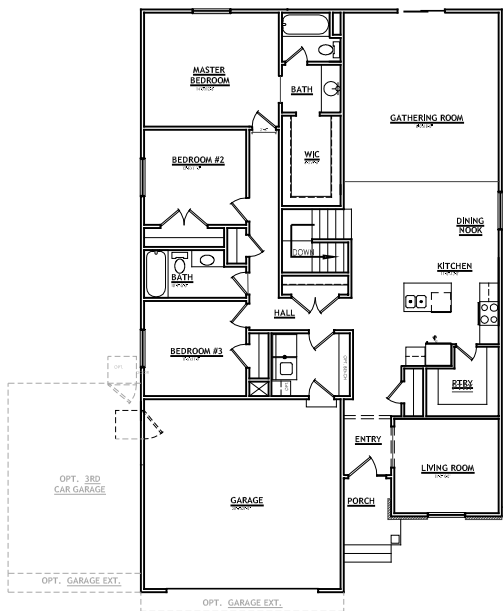
3,325 Total | 1,696 Finished | 1,629 Unfinished

DIMENSIONS

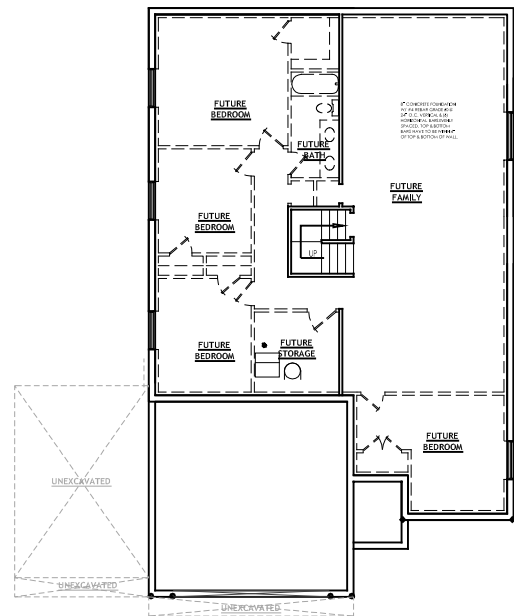
38'-0" Width | 61'-4" Depth



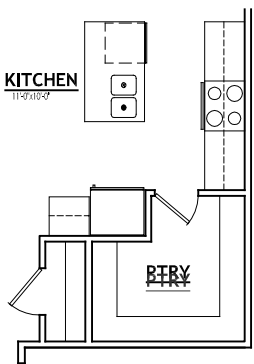
FRONT ELEVATION



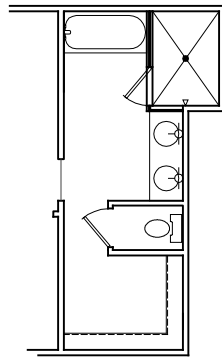
MAIN LEVEL (OPTIONAL 9'-0" CEILING)



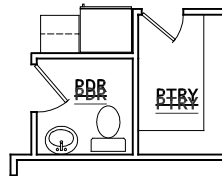
UNFINISHED BASEMENT (OPTIONAL 9'-0" WALLS)



OPT. KITCHEN UPGRADE



OPT. GRAND MASTER BATH



OPT. POWDER BATH

PLEASE NOTE: Square footage and measurements noted are approximate. All drawings of exteriors and floor plans are artist's renditions and may vary from actual product. Plans are subject to change to comply with city ordinances. Placement of home on lot is done at seller's discretion. All information on this sheet is subject to change without notice.  
12-27-16 v1

