

STANDARD ELEVATION

BALLARD A_BSMT_STCO

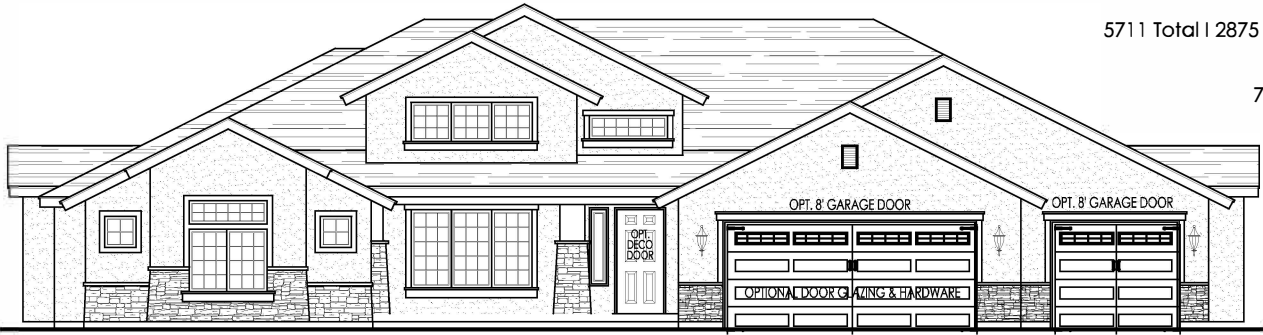
BASEMENT

SQUARE FOOTAGE

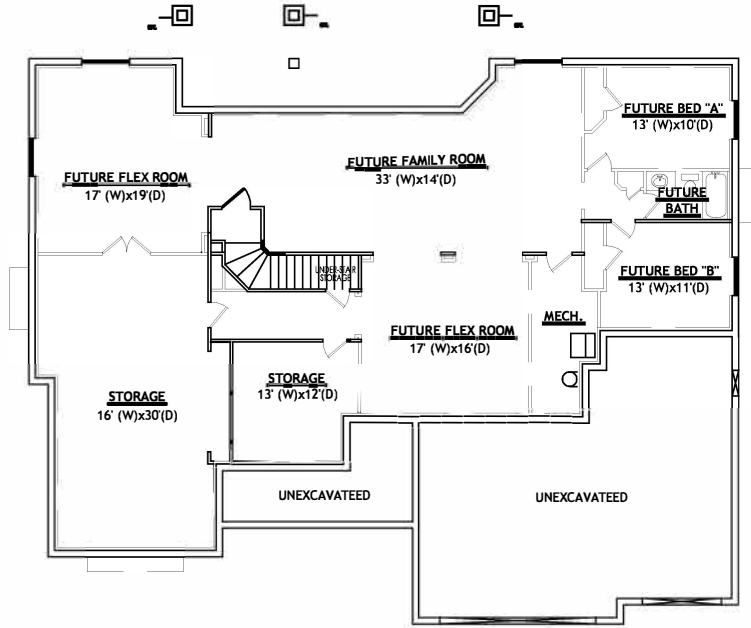
5711 Total | 2875 Finished | 2836 Unfinished

DIMENSIONS

74'-0" Width | 59'-0" Depth



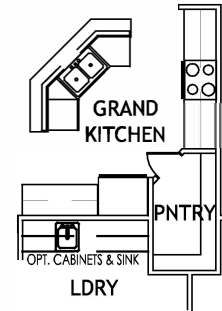
FRONT ELEVATION



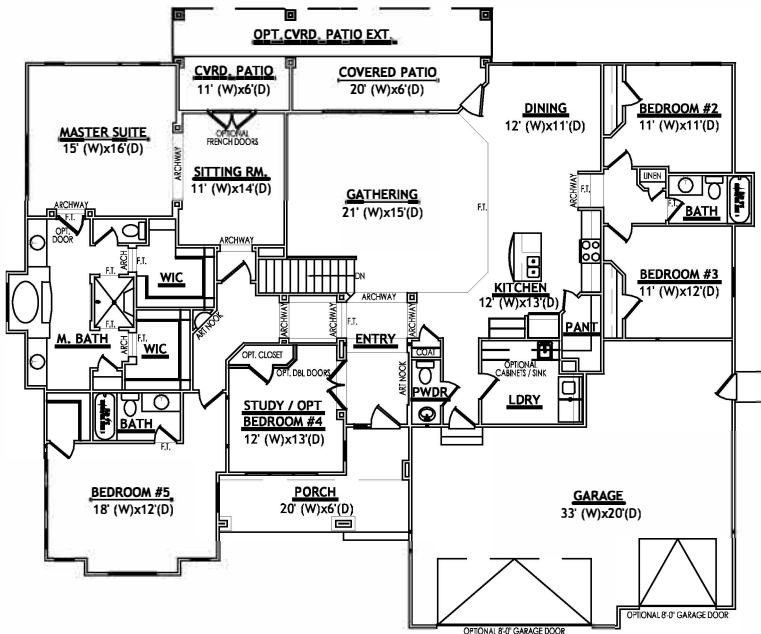
BASEMENT LEVEL



OPT. 5' COVERED PATIO EXTENSION



OPT. GRAND KITCHEN



MAIN LEVEL (OPT. 9' CEILINGS)

PLEASE NOTE: Square footage and measurements noted are approximate. All drawings of exteriors and floor plans are artist's renditions and may vary from actual product. Plans are subject to change to comply with city ordinances. Placement of home on lot is done at seller's discretion. All information on this sheet is subject to change without notice. Option location dependant upon options selected and site conditions.
4-23-13 v1

