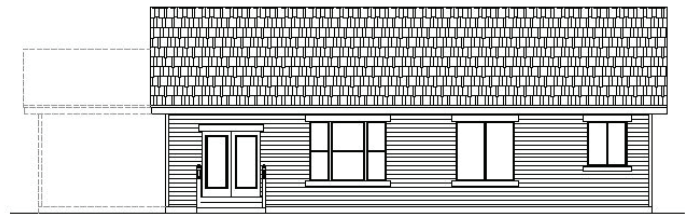




(Optional Third Car Shown)

FRONT ELEVATION



(Optional Third Car Shown)

REAR ELEVATION



LEFT ELEVATION



(Optional Man Door Shown)

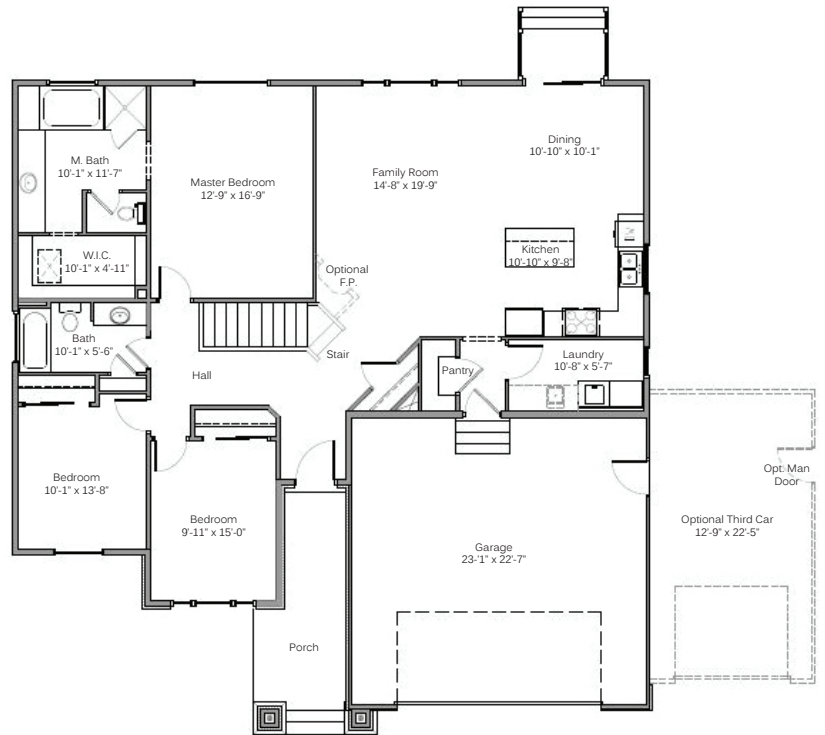
RIGHT ELEVATION

THE BAILEE

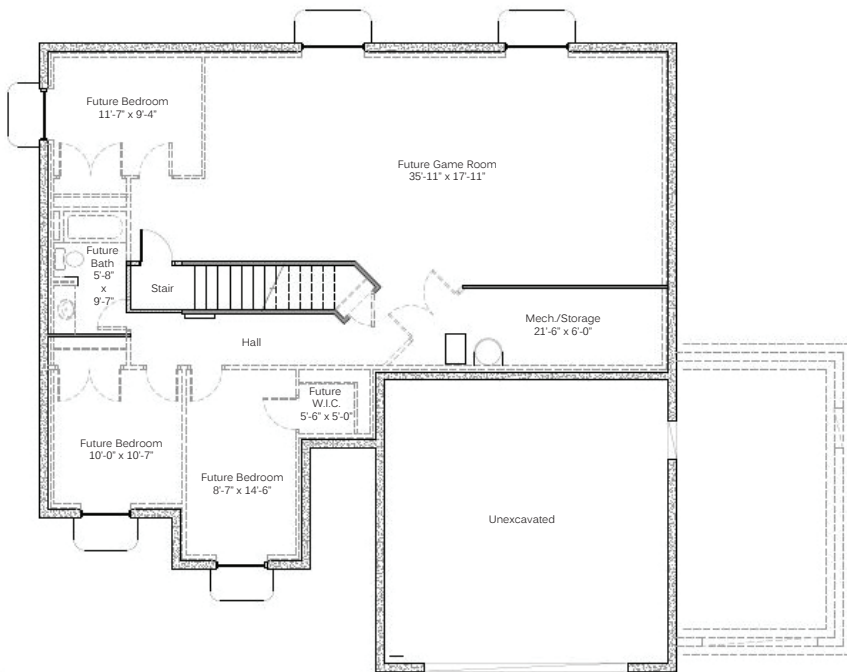
- Large master bath with walk - in closet
- Large open floor plan
- 3 bedrooms/ 2 baths finished
- Elegant craftsman design
- Covered porch/ cold storage

Overall dimensions:	W: 50'-0" x D: 49'4"
Finished square feet:	1, 629
Unfinished square feet:	1, 627
Total square feet:	3, 256

THE BAILEE



MAIN FLOOR



BASEMENT FLOOR