



NILSON HOMES

CELEBRATING

40 YEARS



BEAUMONT

SPECIFICATIONS

TOTAL SQFT:.....5,030
 Finished SQFT:3,025
 Unfinished SQFT:2,005
 Bed: 5/7 | Bath: 2.5/3.5
 Width: 62' | Depth: 48'

Nilson Homes has a wide variety of home designs, model homes and communities throughout Weber and Davis Counties. Please contact your New Home Sales Representative today to find out more about building your future home.

GephardtApproved



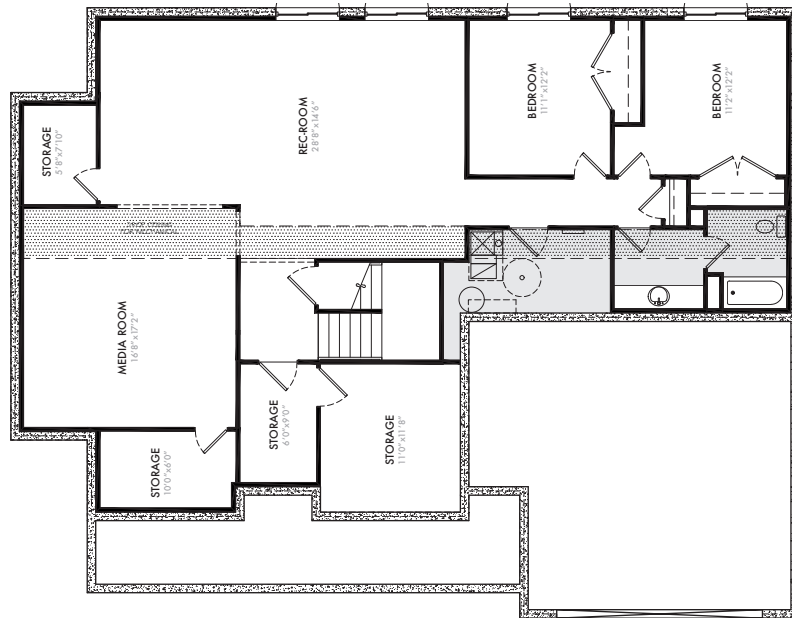
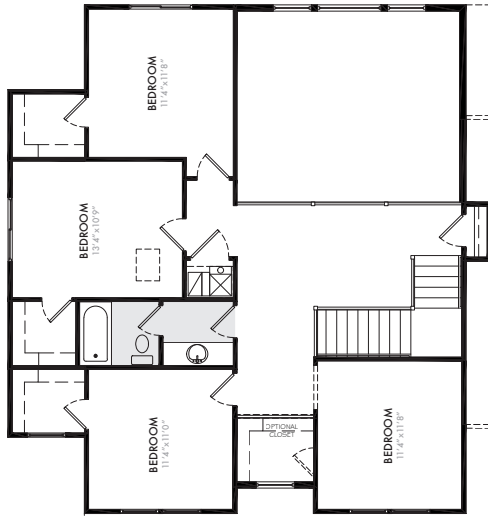
Facebook.com/NilsonHomes



YouTube.com/NilsonHomes

NILSONHOMES.COM

5617 SOUTH 1475 EAST, SOUTH OGDEN, UT | 801.458.9040



* Plans and square footage are approximate and subject to change. Prices change without notice. Renderings are intended for artistic purposes only. Other amenities available.