



Solaris Argento

SF 2,116 - 2,224 | 3 Bed | 2.5 Bath | 2 Car Garage

Elevation 1



Elevation 2



Elevation 3



This spacious home offers an open concept main floor living area with great flow between kitchen, dining and living areas. A gourmet kitchen features, spacious pantry and center island and ample counter space. The master suite boasts a large walk in closet and a private bath. The oversized windows create an abundance of natural light throughout.

*Floorplans and renderings are conceptual drawings and may vary from actual plans and homes as built. Options and features may not be available on all homes and are subject to change without notice. Dimensions are approximate. Actual homes may vary from photos and/or drawings which may show upgrades and may not represent the lowest-priced homes in the community.



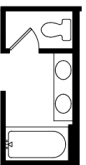
garbetthomes.com



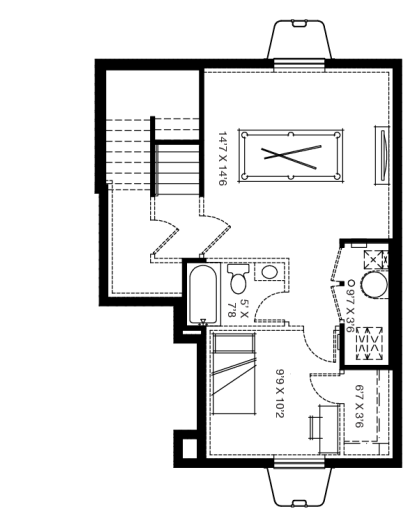
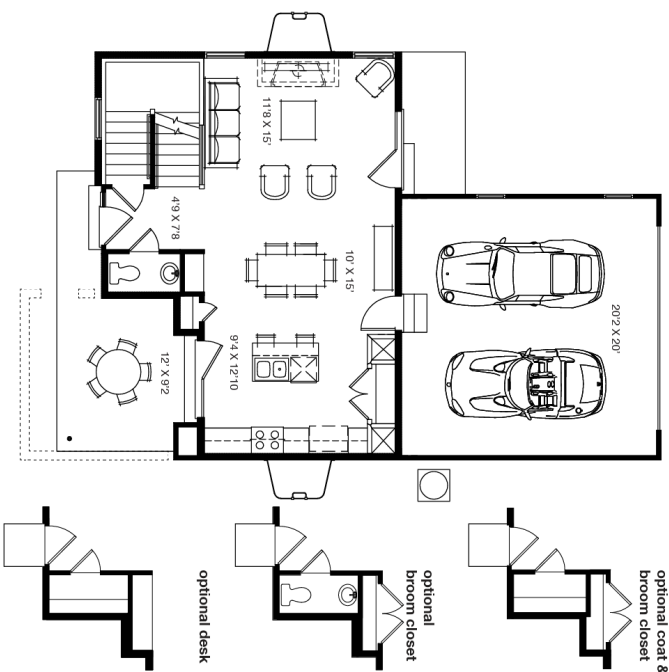


Solaris Argento

SF 2,116 - 2,224 | 3 Bed | 2.5 Bath | 2 Car Garage



Grand Master Bath



*Floorplans and renderings are conceptual drawings and may vary from actual plans and homes as built. Options and features may not be available on all homes and are subject to change without notice. Dimensions are approximate. Actual homes may vary from photos and/or drawings which may show upgrades and may not represent the lowest-priced homes in the community.