



# Equinox *Appel*

SF 2,268 | 3 bedrooms | 2.5 Bathrooms | 2 Car Garage

*Elevation 1*



*Elevation 2*



*Elevation 3*



The Appel invites you in and brings you right into the action. From moment you walk into the entry you are a part of this open floor plan. Come right from entry to great room with visibility of the full kitchen and dining spaces. The entry also provides a private half bath, coat closet and opens on to the stairs to the second floor. On the second floor a versatile loft greets you, dividing the floor into two spaces. On one side you have the laundry, two bedrooms and hall bath. To the other side, you find the spacious master suite with dual walk-in closets and an ample master bath.

\*Floorplans and renderings are conceptual drawings and may vary from actual plans and homes as built. Options and features may not be available on all homes and are subject to change without notice. Dimensions are approximate. Actual homes may vary from photos and/or drawings which may show upgrades and may not represent the lowest-priced homes in the community. 01/05/18



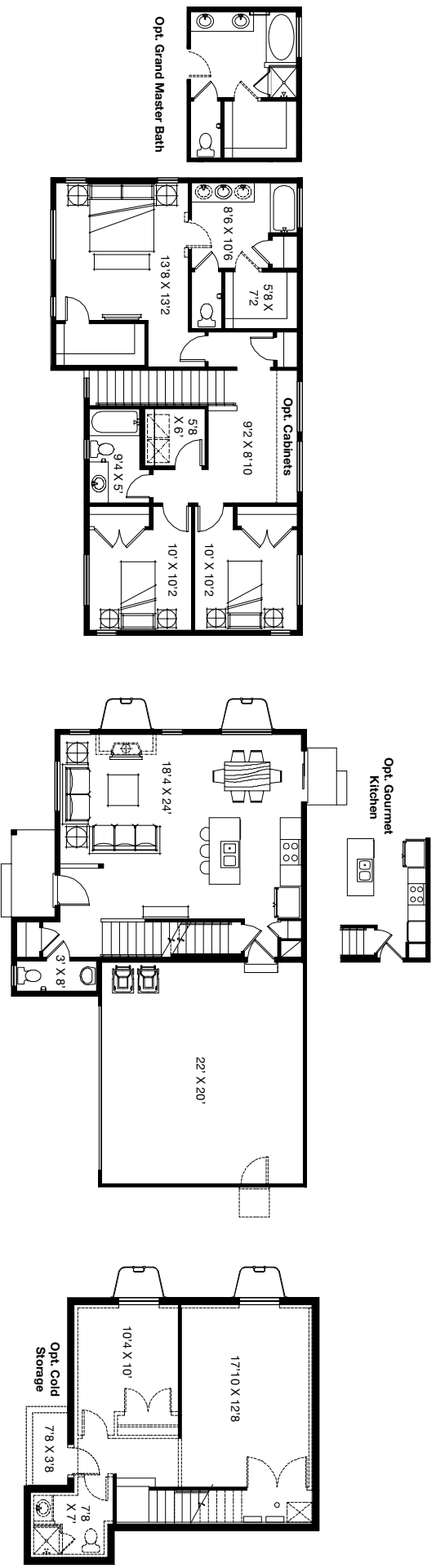
[garbcthomes.com](http://garbcthomes.com)





# Equinox Appel

SF 2,268 | 3 bedrooms | 2.5 Bathrooms | 2 Car Garage



\*Floorplans and renderings are conceptual drawings and may vary from actual plans and homes as built. Options and features may not be available on all homes and are subject to change without notice. Dimensions are approximate. Actual homes may vary from photos and/or drawings which may show upgrades and may not represent the lowest-priced homes in the community.