

Amesbury

Two-story • 1,742 Finished Sq. Ft. • 2,561 Total Sq. Ft. • 3-5 Bedrooms • 2.5-3.5 Baths • Open Great Room Living
Opt. Covered Patio • Opt. Loft • Opt. Bedroom Upstairs • 2 Car Garage



A



B



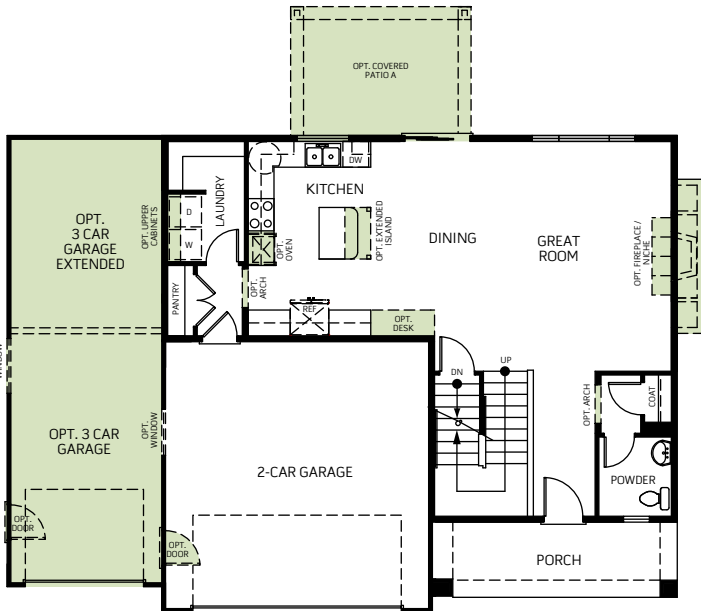
C

Woodside Homes reserves the right to change elevations, specifications, materials and prices without notice. All square footages are approximate. Window location, porches, ceiling heights and room dimensions vary per elevation. The availability of certain options is subject to construction status and schedule. Optional features may be predetermined and included at additional cost on select homes. Renderings are artist's conception only. Rev. 01/18

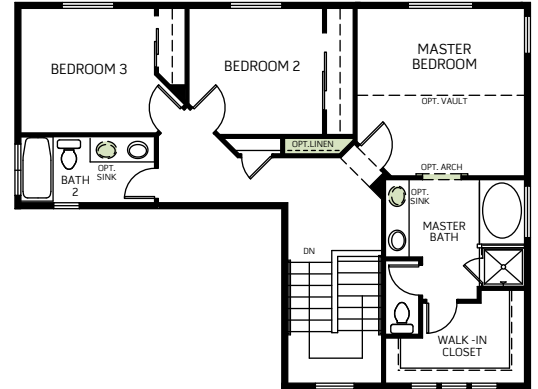


Amesbury

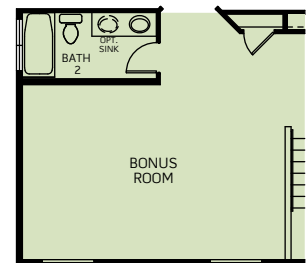
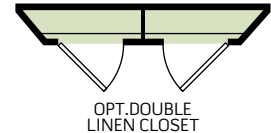
Two-story • 1,742 Finished Sq. Ft. • 2,561 Total Sq. Ft. • 3-5 Bedrooms • 2.5-3.5 Baths • Open Great Room Living
Opt. Covered Patio • Opt. Loft • Opt. Bedroom Upstairs • 2 Car Garage



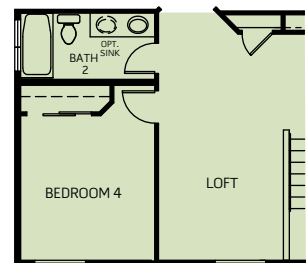
FIRST FLOOR
910 Sq. Ft.



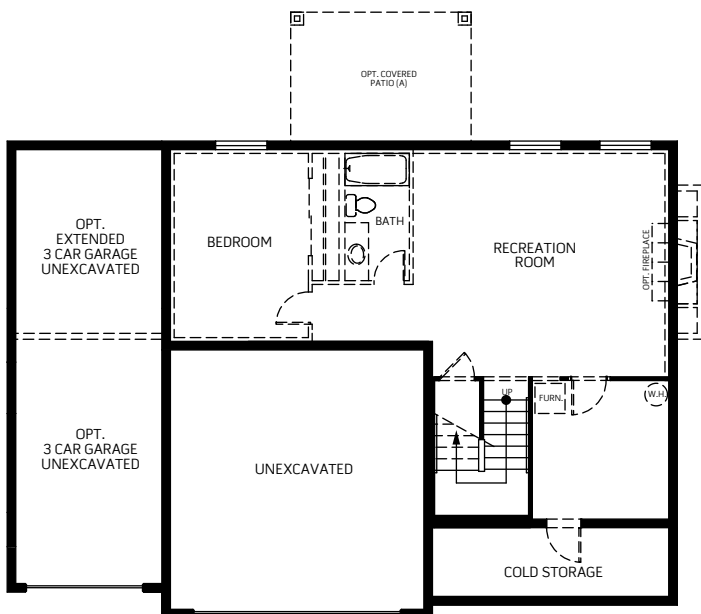
SECOND FLOOR
832 Sq. Ft.



OPT. BONUS ROOM



OPT. BONUS BEDROOM 4 AND LOFT



BASEMENT
819 Sq. Ft. Unfinished

Woodside Homes reserves the right to change elevations, specifications, materials and prices without notice. All square footages are approximate. Window location, porches, ceiling heights and room dimensions vary per elevation. The availability of certain options is subject to construction status and schedule. Optional features may be predetermined and included at additional cost on select homes. Renderings are artist's conception only. Rev. 01/18



Amesbury Bonus Room

Two-story • 1,742 Finished Sq. Ft. • 2,561 Total Sq. Ft. • 3-5 Bedrooms • 2.5-3.5 Baths • Open Great Room Living
Opt. Covered Patio • Opt. Loft • Opt. Bedroom Upstairs • 2 Car Garage



A



B



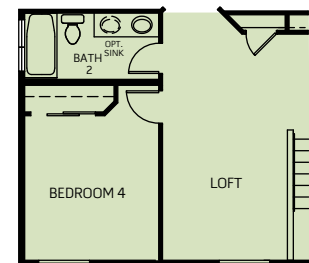
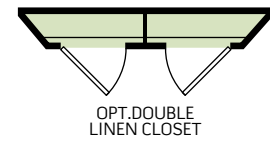
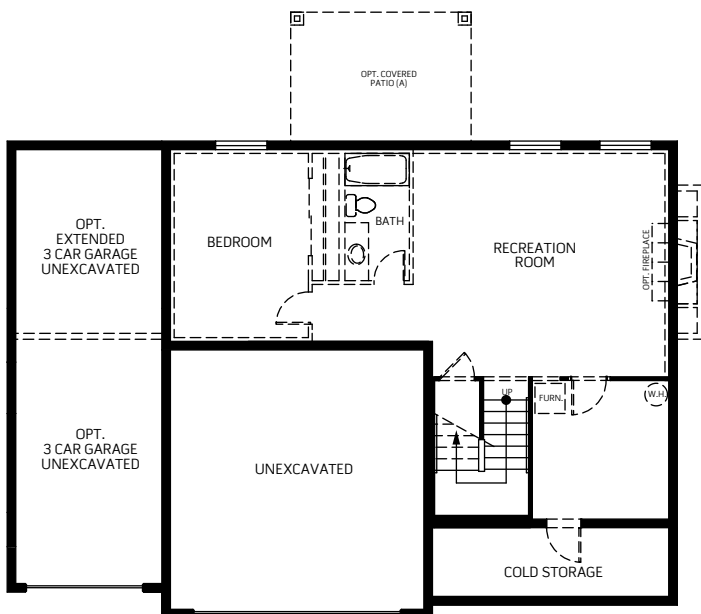
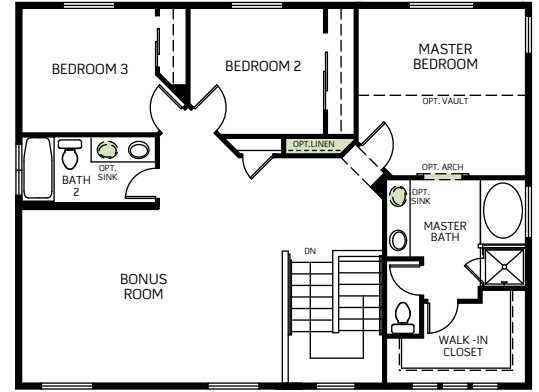
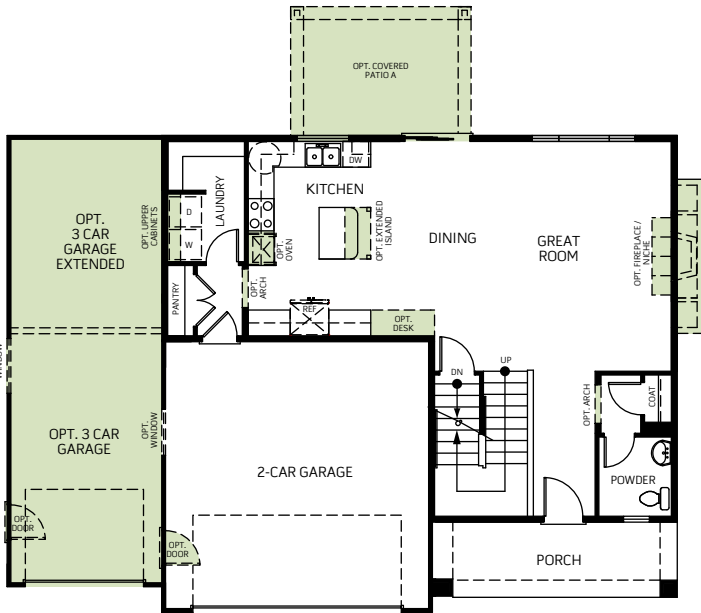
C

Woodside Homes reserves the right to change elevations, specifications, materials and prices without notice. All square footages are approximate. Window location, porches, ceiling heights and room dimensions vary per elevation. The availability of certain options is subject to construction status and schedule. Optional features may be predetermined and included at additional cost on select homes. Renderings are artist's conception only. Rev. 01/18



Amesbury Bonus Room

Two-story • 1,742 Finished Sq. Ft. • 2,561 Total Sq. Ft. • 3-5 Bedrooms • 2.5-3.5 Baths • Open Great Room Living
Opt. Covered Patio • Opt. Loft • Opt. Bedroom Upstairs • 2 Car Garage



Woodside Homes reserves the right to change elevations, specifications, materials and prices without notice. All square footages are approximate. Window location, porches, ceiling heights and room dimensions vary per elevation. The availability of certain options is subject to construction status and schedule. Optional features may be predetermined and included at additional cost on select homes. Renderings are artist's conception only. Rev. 01/18

