



# McClelland Enclave

## *Alvin 1*

SF 2,474 | 3 bedrooms | 2.5 Bathrooms | 2 Car Garage

**\$665,332**



***Lot 102 - 558 S. McClelland Street***

The Alvin is designed to delight! A wide entry and two-story volume ceiling greet you offering a glimpse at this homes open concept. The space continues with kitchen, featuring walk-in pantry, flowing into the dining area and great room. An accommodating mudroom/drop zone with half bath complete the first floor. Upstairs, unwind in a spacious master suite with private bath, walk-in closet and convenient access to the hall laundry room. A second full bath, and two more bedrooms complete this home and provide additional spaces to make your own.

\*Floorplans and renderings are conceptual drawings and may vary from actual plans and homes as built. Options and features may not be available on all homes and are subject to change without notice. Dimensions are approximate. Actual homes may vary from photos and/or drawings which may show upgrades and may not represent the lowest-priced homes in the community. 01/05/18



[garbetthomes.com](http://garbetthomes.com)

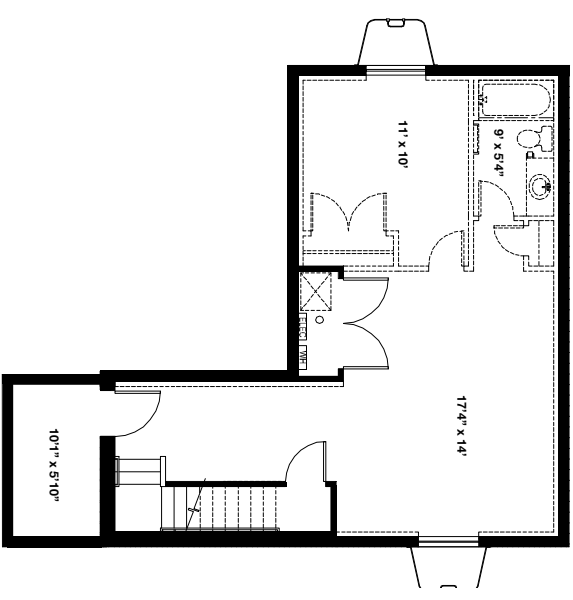
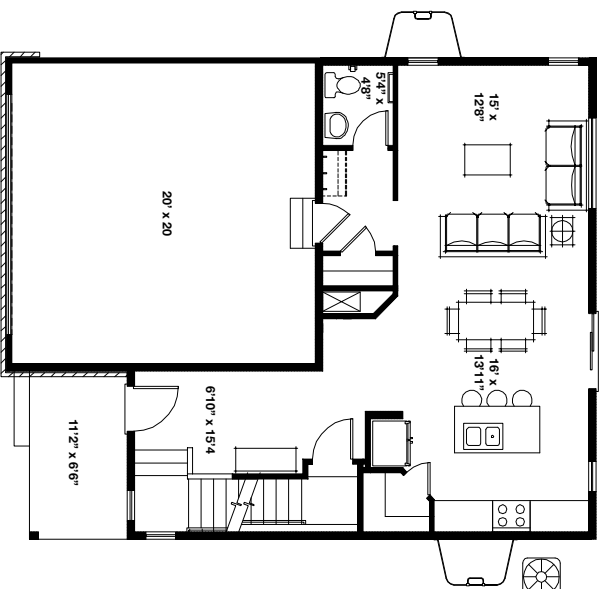
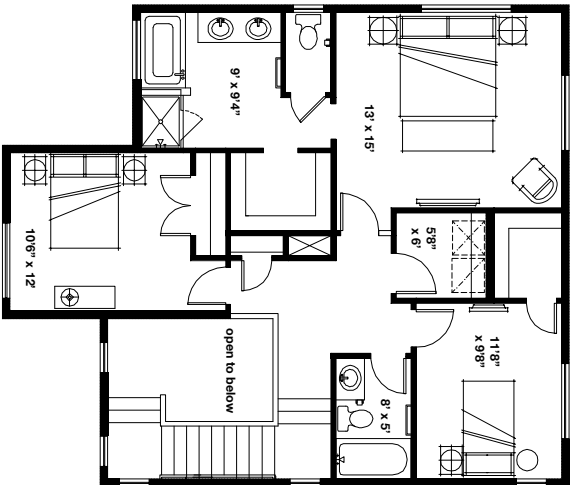




# McClelland Enclave

## Alvin 1

SF 2,474 | 3 bedrooms | 2.5 Bathrooms | 2 Car Garage



\*Floorplans and renderings are conceptual drawings and may vary from actual plans and homes as built. Options and features may not be available on all homes and are subject to change without notice. Dimensions are approximate. Actual homes may vary from photos and/or drawings which may show upgrades and may not represent the lowest-priced homes in the community.