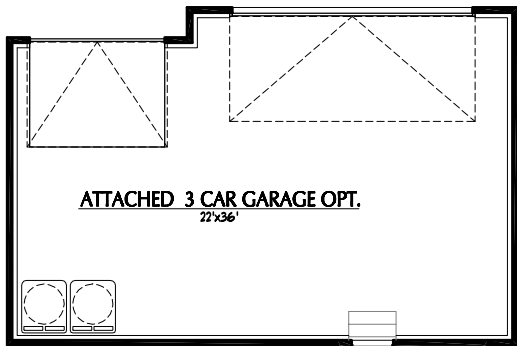


# HUNTINGTON A

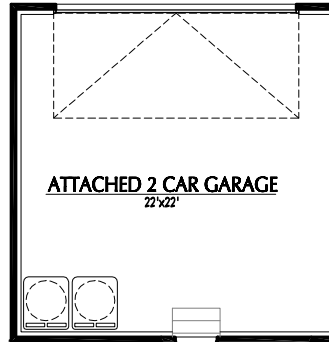


BEDROOMS: 3  
BATHROOMS: 2.5  
FINISHED SQ FT: 2,031  
TOTAL SQ FT: 2,910

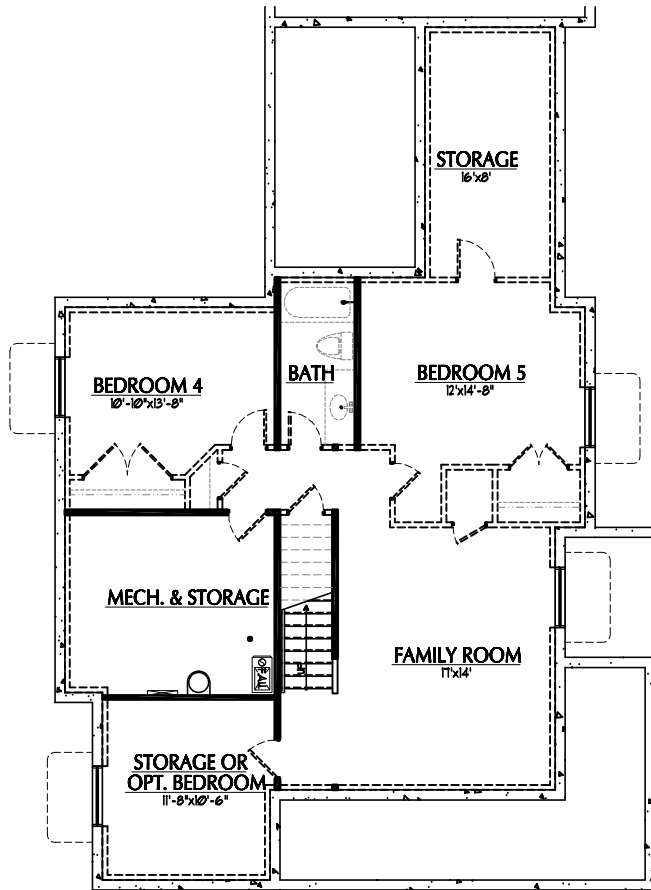
ILLUSTRATIONS ARE THE ARTISTS RENDERING ONLY AND ARE SUBJECT TO CHANGE WITHOUT NOTICE MEASUREMENTS SHOWN ARE APPROXIMATE.



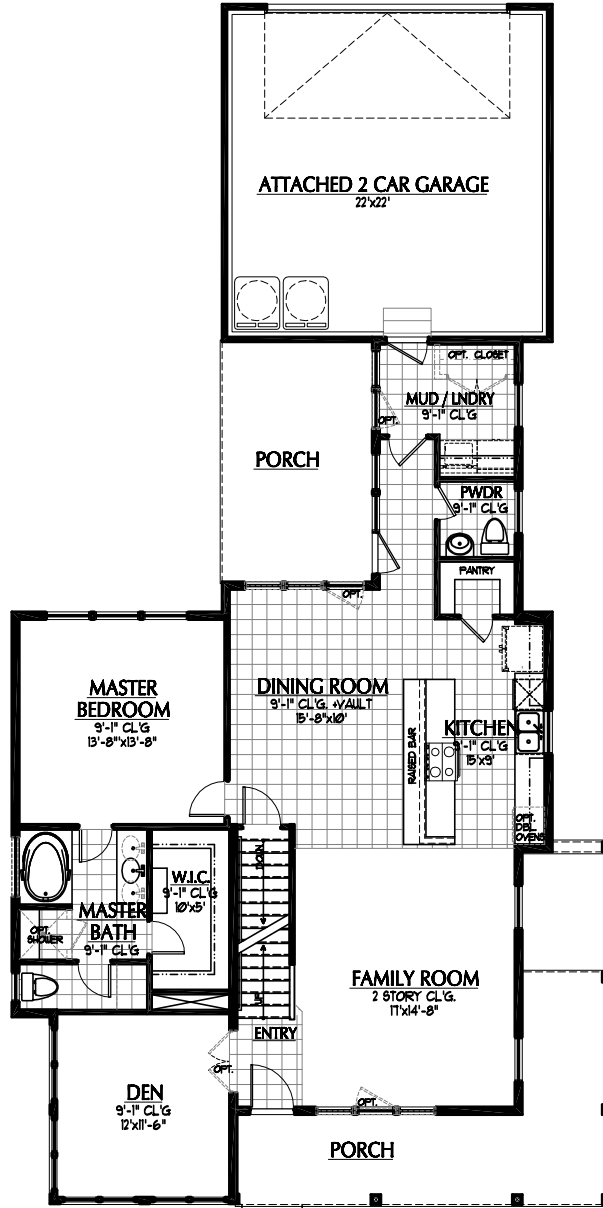
3 CAR GARAGE OPT.



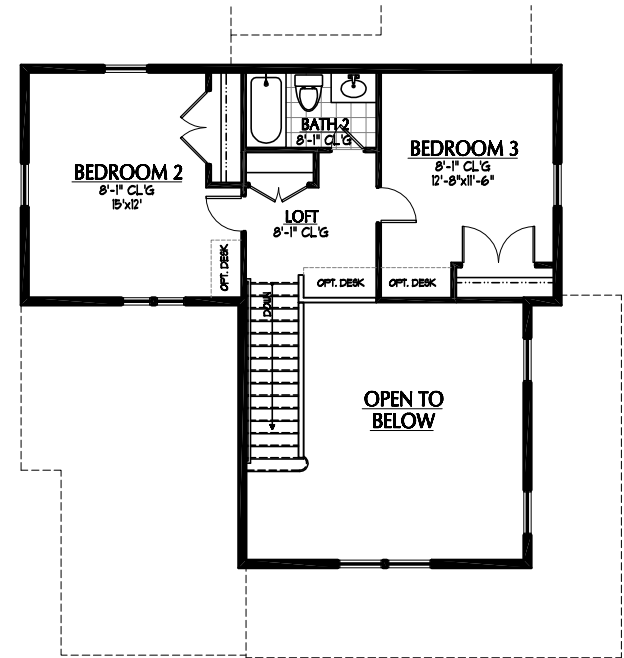
ATTACHED 2 CAR GARAGE  
22x22'



BASEMENT



MAIN FLOOR



SECOND FLOOR

ACTIVE DATE:

ATTACHED GARAGE  
**HUNTINGTON A**

