

# HUDSON B



BEDROOMS: 3

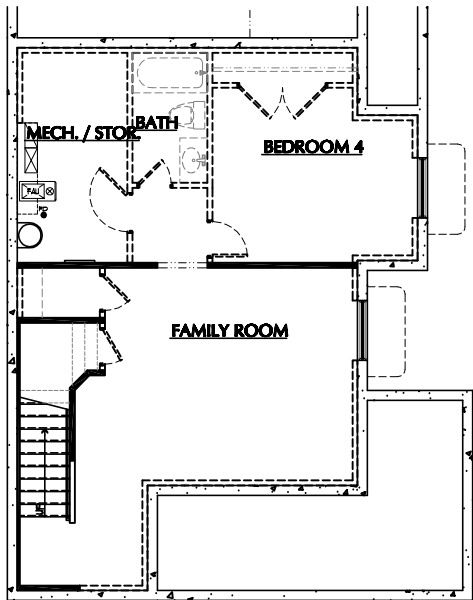
BATHROOMS: 2.5

FINISHED SQ FT: 1,897

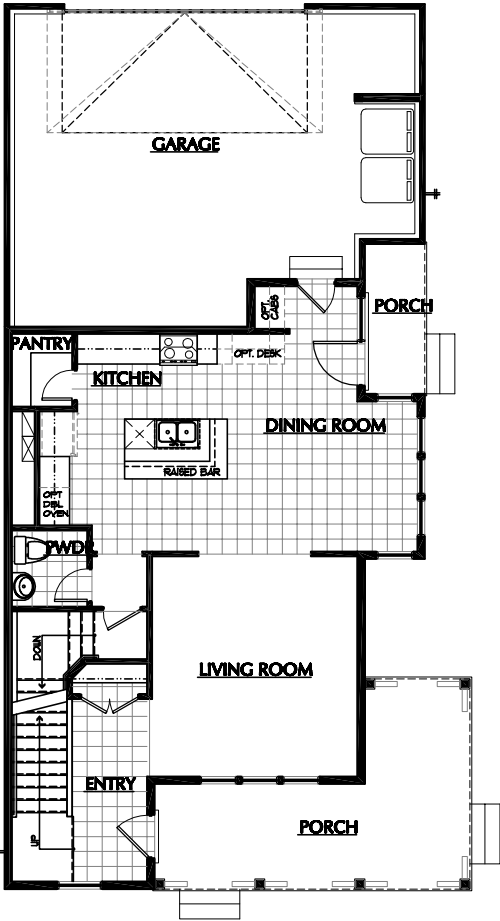
TOTAL SQ FT: 2,681



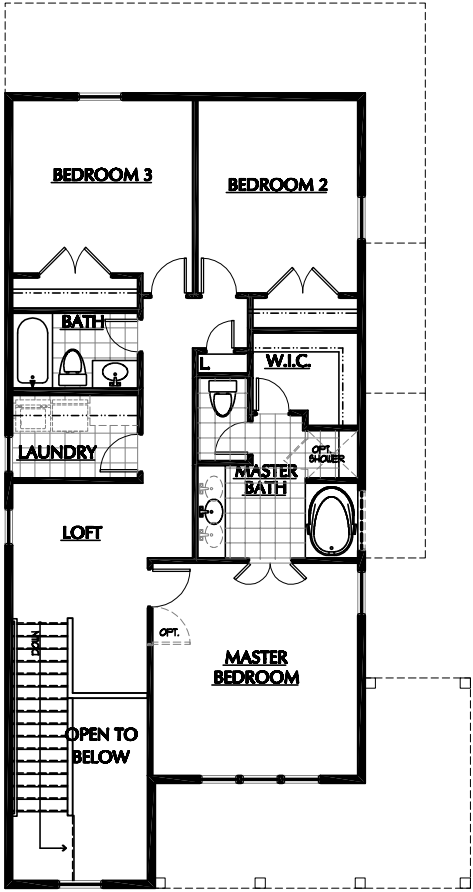
ILLUSTRATIONS ARE THE ARTISTS RENDERING ONLY AND ARE SUBJECT TO CHANGE WITHOUT NOTICE MEASUREMENTS SHOWN ARE APPROXIMATE.



**BASEMENT**



**MAIN FLOOR**



**SECOND FLOOR**

ACTIVE DATE:

**HUDSON B**

