

HUDSON A



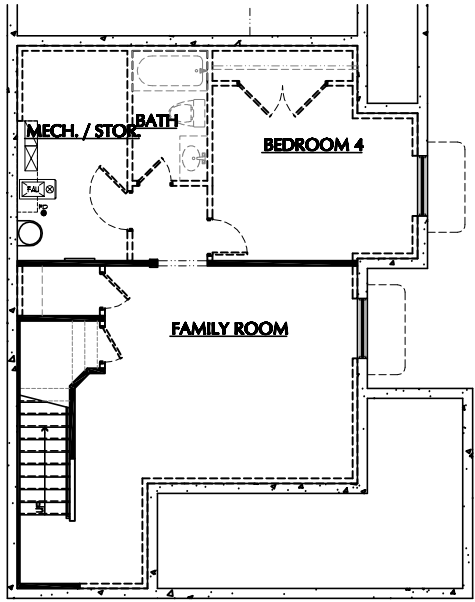
BEDROOMS: 3

BATHROOMS: 2.5

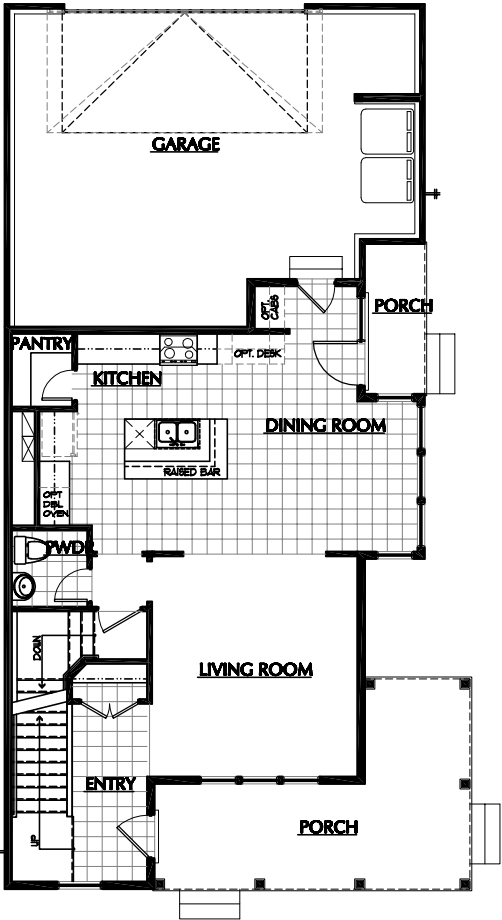
FINISHED SQ FT: 1,897

TOTAL SQ FT: 2,681

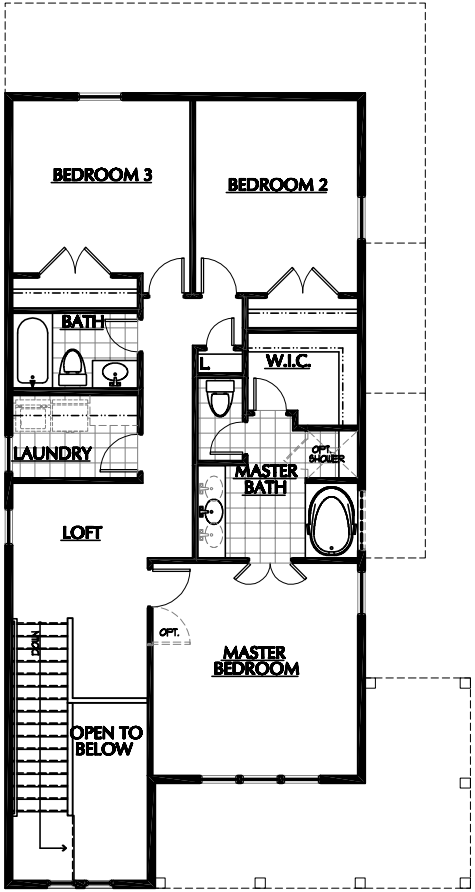
ILLUSTRATIONS ARE THE ARTISTS RENDERING ONLY AND ARE SUBJECT TO CHANGE WITHOUT NOTICE MEASUREMENTS SHOWN ARE APPROXIMATE.



BASEMENT



MAIN FLOOR



SECOND FLOOR

ACTIVE DATE:

HUDSON A

